

LDHA (Phospho Tyr10) Rabbit pAb

CatalogNo: YP1385 **Orthogonal Validated** 

Key Features

Host Species

- Rabbit

Reactivity

- Human

Applications

- WB,ELISA,IHC

MW

- 36kD (Observed)

Isotype

- IgG

Storage

Storage* -15°C to -25°C/1 year(Do not lower than -25°C)

Formulation Liquid in PBS containing 50% glycerol, 0.5% BSA and 0.02% sodium azide.

Recommended Dilution Ratios

WB 1:500-2000

IHC 1:50-300

ELISA 1:2000-20000

Basic Information

Clonality Polyclonal

Immunogen Information

Immunogen Synthesized phospho peptide around human LDHA (Tyr10)

Specificity This antibody detects endogenous levels of Human Mouse Rat LDHA (phospho-Tyr10)

Target Information

Gene name LDHA PIG19

Protein Name

LDHA (Tyr10)

Organism	Gene ID	UniProt ID
Human	3939 ;	P00338 ;
Mouse	16828 ;	P06151 ;
Rat	24533 ;	P04642 ;

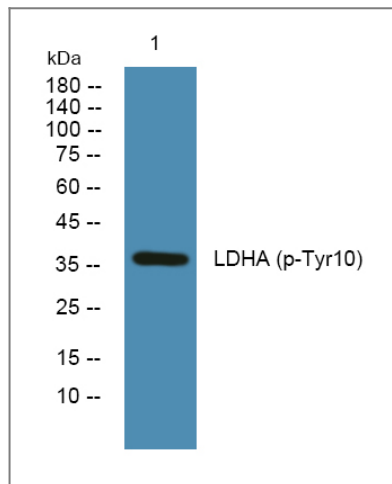
Cellular Localization

Cytoplasm.

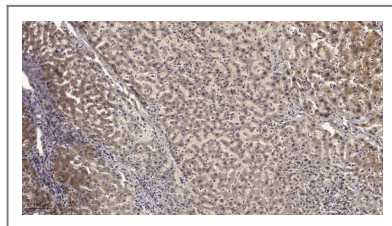
Tissue specificity Predominantly expressed in anaerobic tissues such as skeletal muscle and liver.**Function**

Catalytic activity:(S)-lactate + NAD(+) = pyruvate + NADH.,Caution:The sequence shown here is derived from an Ensembl automatic analysis pipeline and should be considered as preliminary data.,Disease:Defects in LDHA are a cause of exertional myoglobinuria.,online information:Lactate dehydrogenase entry,pathway:Fermentation; pyruvate fermentation to lactate; (S)-lactate from pyruvate: step 1/1.,similarity:Belongs to the LDH/MDH superfamily.,similarity:Belongs to the LDH/MDH superfamily. LDH family.,subunit:Homotetramer.,

Validation Data



Western blot analysis of lysates from SH-SY5Y cells, primary antibody was diluted at 1:1000, 4° over night



Immunohistochemical analysis of paraffin-embedded human liver cancer. 1, Antibody was diluted at 1:200(4° overnight). 2, Tris-EDTA,pH9.0 was used for antigen retrieval. 3,Secondary antibody was diluted at 1:200(room temperature, 45min).

Contact information

Orders: order.cn@immunoway.com
Support: support.cn@immunoway.com
Telephone: 400-8787-807(China)
Website: http://www.immunoway.com.cn
Address: 2200 Ringwood Ave San Jose, CA 95131 USA



Please scan the QR code
to access additional
product information:
**LDHA (Phospho
Tyr10) Rabbit pAb**

For Research Use Only. Not for Use in Diagnostic Procedures.

[Antibody](#) | [ELISA Kits](#) | [Protein](#) | [Reagents](#)