

LATS1 (Phospho Thr1079) Rabbit pAb

CatalogNo: YP1383

Orthogonal Validated 

Key Features

Host Species

- Rabbit

Reactivity

- Human, Mouse

Applications

- WB, ELISA, IHC

MW

- 140kD (Observed)

Isotype

- IgG

Recommended Dilution Ratios

WB 1:500-2000

IHC 1:50-300

ELISA 1:2000-20000

Storage

Storage* -15°C to -25°C/1 year (Do not lower than -25°C)**Formulation** Liquid in PBS containing 50% glycerol, 0.5% BSA and 0.02% sodium azide.

Basic Information

Clonality Polyclonal

Immunogen Information

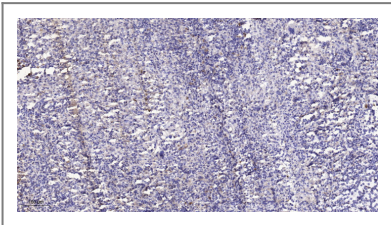
Immunogen Synthesized phospho peptide around human LATS1 (Thr1079)**Specificity** This antibody detects endogenous levels of Human Mouse LATS1 (phospho-Thr1079)

Target Information

Gene name LATS1 WARTS

Protein Name	LATS1 (Thr1079)		
	Organism	Gene ID	UniProt ID
	Human	9113 ;	O95835 ;
	Mouse	16798 ;	Q8BYR2 ;
Cellular Localization	Cytoplasm, cytoskeleton, microtubule organizing center, centrosome . Cytoplasm, cytoskeleton, spindle . Midbody . Cytoplasm, cytoskeleton, microtubule organizing center, spindle pole body . Localizes to the centrosomes throughout interphase but migrates to the mitotic apparatus, including spindle pole bodies, mitotic spindle, and midbody, during mitosis. .		
Tissue specificity	Expressed in all adult tissues examined except for lung and kidney.		
Function	Catalytic activity:ATP + a protein = ADP + a phosphoprotein.,cofactor:Magnesium.,Function:Tumor suppressor which plays a critical role in maintenance of ploidy through its actions in both mitotic progression and the G1 tetraploidy checkpoint. Negatively regulates G2/M transition by down-regulating CDC2 kinase activity. Involved in the control of p53 expression. Affects cytokinesis by regulating actin polymerization through negative modulation of LIMK1. May also play a role in endocrine function.,PTM:Autophosphorylated and phosphorylated during M-phase of the cell cycle. Phosphorylated by STK3 at Ser-909 and Thr-1079, which results in its activation. Phosphorylated upon DNA damage, probably by ATM or ATR.,similarity:Belongs to the protein kinase superfamily. AGC Ser/Thr protein kinase family.,similarity:Contains 1 AGC-kinase C-terminal domain.,similarity:Contains 1 protein kinase domain.,similarity:Contains 1 UBA domain.,subcellular location:Localizes to the centrosomes throughout interphase but migrates to the mitotic apparatus, including spindle pole bodies, mitotic spindle, and midbody, during mitosis.,subunit:Complexes with CDC2 in early mitosis. LATS1-associated CDC2 has no mitotic cyclin partner and no apparent kinase activity. Binds phosphorylated ZYX, locating this protein to the mitotic spindle and suggesting a role for actin regulatory proteins during mitosis. Binds to and colocalizes with LIMK1 at the actomyosin contractile ring during cytokinesis.,tissue specificity:Expressed in all adult tissues examined except for lung and kidney.,		

Validation Data



Immunohistochemical analysis of paraffin-embedded human spleen. 1, Antibody was diluted at 1:200(4° overnight). 2, Tris-EDTA,pH9.0 was used for antigen retrieval. 3,Secondary antibody was diluted at 1:200(room temperature, 45min).

Contact information

Orders: order.cn@immunoway.com
Support: support.cn@immunoway.com
Telephone: 400-8787-807(China)
Website: <http://www.immunoway.com.cn>
Address: 2200 Ringwood Ave San Jose, CA 95131 USA



Please scan the QR code
to access additional
product information:
**LATS1 (Phospho
Thr1079) Rabbit
pAb**

For Research Use Only. Not for Use in Diagnostic Procedures.

[Antibody](#) | [ELISA Kits](#) | [Protein](#) | [Reagents](#)