

## JunB (Phospho Thr102/104) Rabbit pAb

CatalogNo: YP1376

### Key Features

#### Host Species

- Rabbit

#### Reactivity

- Human, Mouse, Rat

#### Applications

- WB, IHC

#### MW

- 36kD (Observed)

#### Isotype

- IgG

### Storage

**Storage\*** -15°C to -25°C/1 year (Do not lower than -25°C)

**Formulation** Liquid in PBS containing 50% glycerol, 0.5% BSA and 0.02% sodium azide.

### Recommended Dilution Ratios

**WB 1:500-2000**

**IHC 1:50-300**

### Basic Information

**Clonality** Polyclonal

### Immunogen Information

**Immunogen** Synthesized phospho peptide around human JunB (Thr102 and Thr104)

**Specificity** Detects endogenous levels of I $\kappa$ B- $\alpha$  only when phosphorylated at Ser32 or Ser36, and dually phosphorylated at two sites

### Target Information

**Gene name** JUNB

**Protein Name** JunB (Thr102/Thr104)

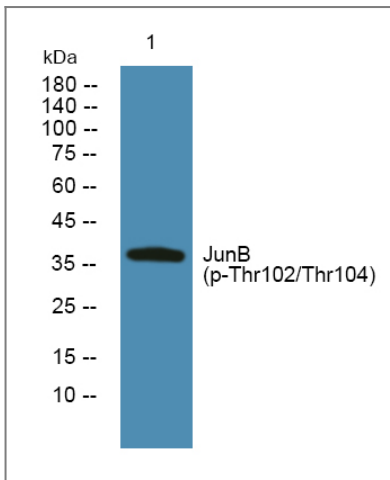
Organism	Gene ID	UniProt ID
Human	<a href="#">3726;</a>	<a href="#">P17275;</a>
Mouse	<a href="#">16477;</a>	<a href="#">P09450;</a>
Rat	<a href="#">24517;</a>	<a href="#">P24898;</a>

**Cellular Localization** Nucleus.

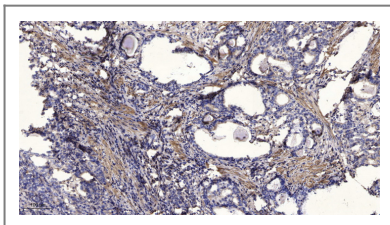
**Tissue specificity** Adipose tissue,Epithelium,Pancreas,Placenta,Prostat

**Function** Function:Transcription factor involved in regulating gene activity following the primary growth factor response. Binds to the DNA sequence 5'-TGA[CG]TCA-3',,induction:By growth factors.,similarity:Belongs to the bZIP family.,similarity:Belongs to the bZIP family. Jun subfamily.,similarity:Contains 1 bZIP domain.,subunit:Binds DNA as an homodimer or as an heterodimer with another member of the jun/fos family.,

## Validation Data



Western blot analysis of lysates from K562 cells, primary antibody was diluted at 1:1000, 4° over night



Immunohistochemical analysis of paraffin-embedded human Gastric adenocarcinoma. 1, Antibody was diluted at 1:200(4° overnight). 2, Tris-EDTA,pH9.0 was used for antigen retrieval. 3,Secondary antibody was diluted at 1:200(room temperature, 45min).

## Contact information

Orders: order.cn@immunoway.com  
Support: support.cn@immunoway.com  
Telephone: 400-8787-807(China)  
Website: <http://www.immunoway.com.cn>  
Address: 2200 Ringwood Ave San Jose, CA 95131 USA



Please scan the QR code to access additional product information:  
**JunB (Phospho Thr102/104) Rabbit pAb**

---

For Research Use Only. Not for Use in Diagnostic Procedures.

[Antibody](#) | [ELISA Kits](#) | [Protein](#) | [Reagents](#)