

## JAK1(Phospho Tyr1034/1035) Rabbit pAb

CatalogNo: YP1373

### Key Features

#### Host Species

- Rabbit

#### Reactivity

- Human, Mouse, Rat

#### Applications

- WB, IHC

#### MW

- 132kD (Observed)

#### Isotype

- IgG

### Recommended Dilution Ratios

WB 1:200-1000

IHC 1:50-300

### Storage

#### Storage\*

-15°C to -25°C/1 year (Do not lower than -25°C)

#### Formulation

Liquid in PBS containing 50% glycerol, 0.5% BSA and 0.02% sodium azide.

### Basic Information

#### Clonality

Polyclonal

### Immunogen Information

#### Immunogen

Synthesized phospho peptide around human JAK1(Tyr1034 and 1035)

#### Specificity

This antibody detects endogenous levels of JAK1 only when phosphorylated at Tyr1034 or Tyr1035 and dually phosphorylated at two sites

### Target Information

#### Gene name

JAK1 JAK1A JAK1B

**Protein Name** JAK1(Tyr1034/1035)

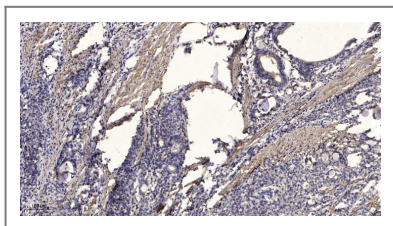
Organism	Gene ID	UniProt ID
Human	<a href="#">3716;</a>	<a href="#">P23458;</a>
Mouse		<a href="#">P52332;</a>

**Cellular Localization** Endomembrane system; Peripheral membrane protein. Wholly intracellular, possibly membrane associated.

**Tissue specificity** Expressed at higher levels in primary colon tumors than in normal colon tissue. The expression level in metastatic colon tumors is comparable to the expression level in normal colon tissue.

**Function** Catalytic activity:ATP + a [protein]-L-tyrosine = ADP + a [protein]-L-tyrosine phosphate.,Domain:Possesses two phosphotransferase domains. The second one probably contains the catalytic domain (By similarity), while the presence of slight differences suggest a different role for domain 1.,Domain:The FERM domain mediates interaction with JAKMIP1.,Function:Tyrosine kinase of the non-receptor type, involved in the IFN-alpha/beta/gamma signal pathway. Kinase partner for the interleukin (IL)-2 receptor.,sequence Caution:Translation N-terminally extended.,similarity:Belongs to the protein kinase superfamily. Tyr protein kinase family. JAK subfamily.,similarity:Contains 1 FERM domain.,similarity:Contains 1 protein kinase domain.,similarity:Contains 1 SH2 domain.,subcellular location:Wholly intracellular, possibly membrane associated.,subunit:Interacts with IL31RA, JAKMIP1 and SHB.,tissue specificity:Expressed at higher levels in primary colon tumors than in normal colon tissue. The expression level in metastatic colon tumors is comparable to the expression level in normal colon tissue.,

## Validation Data



Immunohistochemical analysis of paraffin-embedded human Gastric adenocarcinoma. 1, Antibody was diluted at 1:200(4° overnight). 2, Tris-EDTA,pH9.0 was used for antigen retrieval. 3,Secondary antibody was diluted at 1:200(room temperature, 45min).

## Contact information

Orders: [order.cn@immunoway.com](mailto:order.cn@immunoway.com)  
Support: [support.cn@immunoway.com](mailto:support.cn@immunoway.com)  
Telephone: 400-8787-807(China)  
Website: <http://www.immunoway.com.cn>  
Address: 2200 Ringwood Ave San Jose, CA 95131 USA



Please scan the QR code to access additional product information:  
**JAK1(Phospho Tyr1034/1035)**  
**Rabbit pAb**

