

## IRF-7 (Phospho Ser477) Rabbit pAb

CatalogNo: YP1366 **Orthogonal Validated** 

### Key Features

#### Host Species

- Rabbit

#### Reactivity

- Human, Mouse, Rat

#### Applications

- WB, IHC

#### MW

- 55kD (Observed)

#### Isotype

- IgG

### Storage

**Storage\*** -15°C to -25°C/1 year (Do not lower than -25°C)

**Formulation** Liquid in PBS containing 50% glycerol, 0.5% BSA and 0.02% sodium azide.

### Recommended Dilution Ratios

**WB 1:500-2000**

**IHC 1:50-300**

### Basic Information

**Clonality** Polyclonal

### Immunogen Information

**Immunogen** Synthesized phospho peptide around human IRF-7 (Ser477)

**Specificity** This antibody detects endogenous levels of Human IRF-7 (phospho-Ser477), Mouse IRF-7 (phospho-Ser431), Rat IRF-7 (phospho-Ser429). The name of modified sites may be influenced by many factors, such as species (the modified site was not originally found in human samples) and the change of protein sequence (the previous protein sequence is incomplete, and the protein sequence may be prolonged with the development of protein sequencing technology). When naming, we will use the "numbers" in historical reference to keep the sites consistent with the reports. The antibody binds to the following modification sequence (lowercase letters are modification sites): DSSsL

---

## | Target Information

**Gene name** IRF7

**Protein Name** IRF-7 (Ser477)

Organism	Gene ID	UniProt ID
Human	<a href="#">3665</a> ;	<a href="#">Q92985</a> ;
Mouse	<a href="#">54123</a> ;	<a href="#">P70434</a> ;

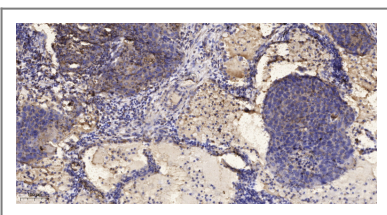
**Cellular Localization** Nucleus. Cytoplasm. The phosphorylated and active form accumulates selectively in the nucleus.

**Tissue specificity** Expressed predominantly in spleen, thymus and peripheral blood leukocytes.

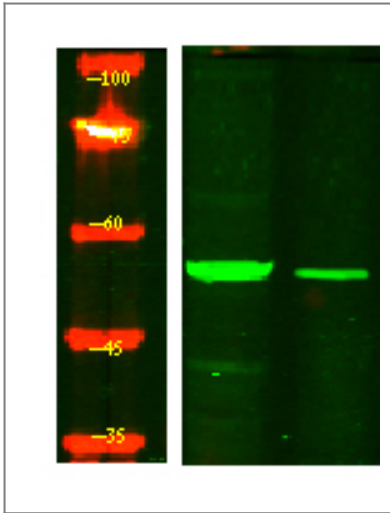
**Function** Function:Transcriptional activator. Binds to the interferon-stimulated response element (ISRE) in IFN promoters and in the Q promoter (Qp) of EBV nuclear antigen 1 (EBNA1). Functions as a molecular switch for antiviral activity. Activated by phosphorylation in response to infection. Activation leads to nuclear retention, DNA binding, and derepression of transactivation ability.,induction:By type I interferons.,PTM:In response to a viral infection, phosphorylated on the C-terminal serine cluster. Phosphorylation, and subsequent activation is inhibited by vaccinia virus protein E3.,similarity:Belongs to the IRF family.,similarity:Contains 1 tryptophan pentad repeat DNA-binding domain.,subcellular location:The phosphorylated and active form accumulates selectively in the nucleus.,subunit:Homodimer; phosphorylation-induced. Interacts with TICAM1 and TICAM2. Interacts with rotavirus A NSP1; this interaction leads to the proteasome-dependent degradation of IRF7. Interacts with Epstein-Barr virus LF2.,tissue specificity:Expressed predominantly in spleen, thymus and peripheral blood leukocytes.,

---

## | Validation Data



Immunohistochemical analysis of paraffin-embedded human Squamous cell carcinoma of lung. 1, Antibody was diluted at 1:200(4° overnight). 2, Tris-EDTA,pH9.0 was used for antigen retrieval. 3,Secondary antibody was diluted at 1:200(room temperature, 45min).



Western Blot analysis of HeLa treated or untreated by LPS lysis, using primary antibody at 1:1000 dilution. Secondary antibody(catalog#:RS23920) was diluted at 1:10000

## Contact information

Orders: [order.cn@immunoway.com](mailto:order.cn@immunoway.com)  
Support: [support.cn@immunoway.com](mailto:support.cn@immunoway.com)  
Telephone: 400-8787-807(China)  
Website: <http://www.immunoway.com.cn>  
Address: 2200 Ringwood Ave San Jose, CA 95131 USA



Please scan the QR code to access additional product information:  
**IRF-7 (Phospho Ser477) Rabbit pAb**

For Research Use Only. Not for Use in Diagnostic Procedures.

[Antibody](#) | [ELISA Kits](#) | [Protein](#) | [Reagents](#)