

## EphA2 (Phospho Tyr772) Rabbit pAb

CatalogNo: YP1331

Orthogonal Validated 

### Key Features

#### Host Species

- Rabbit

#### Reactivity

- Human, Rat, Mouse,

#### Applications

- WB

#### MW

- 105kD (Observed)

#### Isotype

- IgG

### Recommended Dilution Ratios

**WB 1:1000-2000**

### Storage

**Storage\***

-15°C to -25°C/1 year(Do not lower than -25°C)

**Formulation**

Liquid in PBS containing 50% glycerol, 0.5% BSA and 0.02% sodium azide.

### Basic Information

**Clonality**

Polyclonal

### Immunogen Information

**Immunogen**

Synthesized phospho peptide around human EphA2 (Tyr772)

**Specificity**

This antibody detects endogenous levels of Human EphA2 (phospho-Tyr772)

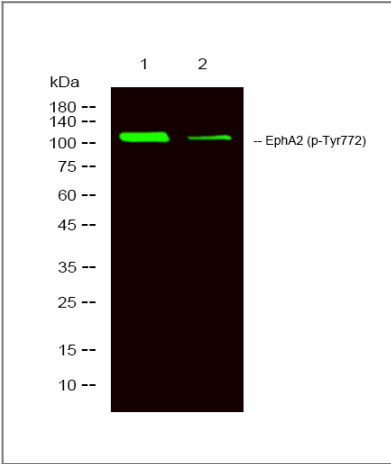
### Target Information

**Gene name**

EPHA2 ECK

|                       |  |                         |                          |
|-----------------------|--|-------------------------|--------------------------|
| Protein Name          | EphA2 (Tyr772)   |                         |                          |
|                       | Organism   | Gene ID                 | UniProt ID               |
|                       | Human  | <a href="#">1969</a> ;  | <a href="#">P29317</a> ; |
|                       | Mouse  | <a href="#">13836</a> ; | <a href="#">Q03145</a> ; |
| Cellular Localization | Cell membrane ; Single-pass type I membrane protein . Cell projection, ruffle membrane ; Single-pass type I membrane protein . Cell projection, lamellipodium membrane ; Single-pass type I membrane protein . Cell junction, focal adhesion . Present at regions of cell-cell contacts but also at the leading edge of migrating cells (PubMed:19573808, PubMed:20861311). Relocates from the plasma membrane to the cytoplasmic and perinuclear regions in cancer cells (PubMed:18794797). .   |                         |                          |
| Tissue specificity    | Expressed in brain and glioma tissue and glioma cell lines (at protein level). Expressed most highly in tissues that contain a high proportion of epithelial cells, e.g. skin, intestine, lung, and ovary.   |                         |                          |
| Function              | Catalytic activity:ATP + a [protein]-L-tyrosine = ADP + a [protein]-L-tyrosine phosphate.,Function:Receptor for members of the ephrin-A family. Binds to ephrin-A1, -A3, -A4 and -A5.,similarity:Belongs to the protein kinase superfamily. Tyr protein kinase family. Ephrin receptor subfamily.,similarity:Contains 1 protein kinase domain.,similarity:Contains 1 SAM (sterile alpha motif) domain.,similarity:Contains 2 fibronectin type-III domains.,subunit:Interacts with SLA (By similarity). Interacts with INPPL1/SHIP2.,tissue specificity:Expressed most highly in tissues that contain a high proportion of epithelial cells, e.g., skin, intestine, lung, and ovary., |                         |                          |

| Validation Data



Western Blot analysis of 1 Hela, 2 treated with LPS 100ng/mL 20mim,using primary antibody at 1:1000 dilution. Secondary antibody(catalog#:RS23920) was diluted at 1:10000

| Contact information

Orders: order.cn@immunoway.com  
Support: support.cn@immunoway.com  
Telephone: 400-8787-807(China)  
Website: <http://www.immunoway.com.cn>  
Address: 2200 Ringwood Ave San Jose, CA 95131 USA



Please scan the QR code  
to access additional  
product information:  
**EphA2 (Phospho  
Tyr772) Rabbit pAb**

---

For Research Use Only. Not for Use in Diagnostic Procedures.

[Antibody](#) | [ELISA Kits](#) | [Protein](#) | [Reagents](#)