

## DBC1 (Phospho Thr454) Rabbit pAb

CatalogNo: YP1312

Orthogonal Validated 

### Key Features

#### Host Species

- Rabbit

#### Reactivity

- Human, Rat, Mouse,

#### Applications

- WB

#### MW

- 105kD (Observed)

#### Isotype

- IgG

### Recommended Dilution Ratios

**WB 1:1000-2000**

### Storage

**Storage\*** -15°C to -25°C/1 year(Do not lower than -25°C)**Formulation** Liquid in PBS containing 50% glycerol, 0.5% BSA and 0.02% sodium azide.

### Basic Information

**Clonality** Polyclonal

### Immunogen Information

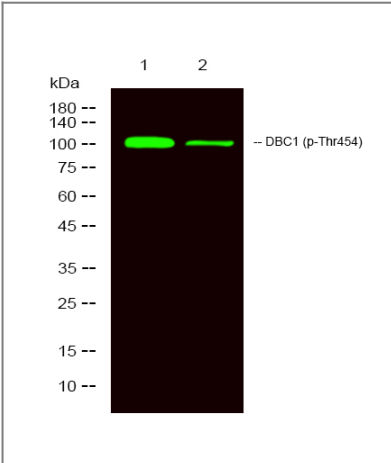
**Immunogen** Synthesized phospho peptide around human DBC1 (Thr454)**Specificity** This antibody detects endogenous levels of Human DBC1 (phospho-Thr454)

### Target Information

**Gene name** KIAA1967 DBC1

Protein Name	DBC1 (Thr454)		
	Organism	Gene ID	UniProt ID
	Human	<a href="#">57805;</a>	<a href="#">Q8N163;</a>
	Mouse	<a href="#">219158;</a>	<a href="#">Q8VDP4;</a>
Cellular Localization	Nucleus . Cytoplasm . Cytoplasm, cytoskeleton, spindle . Recruited to chromatin, post-UV irradiation. Sequestered to the cytoplasm in the presence of MCC. Translocated to the cytoplasm during UV-induced apoptosis. .		
Tissue specificity	Expressed in gastric carcinoma tissue and the expression gradually increases with the progression of the carcinoma (at protein level). Expressed ubiquitously in normal tissues. Expressed in 84 to 100% of neoplastic breast, lung, and colon tissues.		
Function	tissue specificity:Expressed ubiquitously in normal tissues. Expressed in 84 to 100% of neoplastic breast, lung, and colon tissues.,		

Validation Data



Western Blot analysis of 1 MCF-7 treated with LPS, 2 MCF7,using primary antibody at 1:1000 dilution. Secondary antibody(catalog#:RS23920) was diluted at 1:10000

Contact information

Orders: order.cn@immunoway.com  
Support: support.cn@immunoway.com  
Telephone: 400-8787-807(China)  
Website: http://www.immunoway.com.cn  
Address: 2200 Ringwood Ave San Jose, CA 95131 USA



Please scan the QR code to access additional product information:  
**DBC1 (Phospho Thr454) Rabbit pAb**