

Catenin δ -1 (Phospho Ser252) Rabbit pAb

CatalogNo: YP1287

Key Features

Host Species

- Rabbit

Reactivity

- Human, Mouse, Rat

Applications

- WB

MW

- 108kD (Observed)

Isotype

- IgG

Storage

Storage* -15°C to -25°C/1 year (Do not lower than -25°C)

Formulation Liquid in PBS containing 50% glycerol, 0.5% BSA and 0.02% sodium azide.

Recommended Dilution Ratios

WB 1:1000-2000

Basic Information

Clonality Polyclonal

Immunogen Information

Immunogen Synthesized phospho peptide around human Catenin δ -1 (Ser252)

Specificity This antibody detects endogenous levels of Human Catenin δ -1 (phospho-Ser252)

Target Information

Gene name CTNND1 KIAA0384

Protein NameCatenin δ -1 (Ser252)**Organism****Gene ID****UniProt ID**

Human

[1500](#);[O60716](#);

Mouse

[12388](#);[P30999](#);**Cellular Localization**

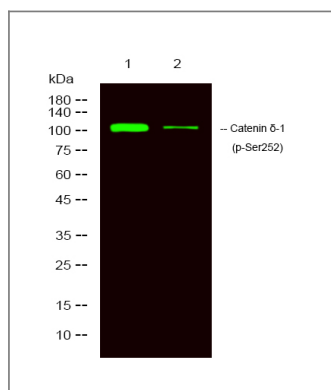
Cell junction, adherens junction . Cytoplasm . Nucleus . Cell membrane . Interaction with GLIS2 promotes nuclear translocation (By similarity). Detected at cell-cell contacts (PubMed:15240885, PubMed:17047063). NANOS1 induces its translocation from sites of cell-cell contact to the cytoplasm (PubMed:17047063). CDH1 enhances cell membrane localization (PubMed:15240885). Isoforms 4A and 1AB are excluded from the nucleus (PubMed:11896187). .; [Isoform 1A]: Nucleus .; [Isoform 2A]: Nucleus .; [Isoform 3A]: Nucleus .

Tissue specificity

Expressed in vascular endothelium. Melanocytes and melanoma cells primarily express the long isoform 1A, whereas keratinocytes express shorter isoforms, especially 3A. The shortest isoform 4A, is detected in normal keratinocytes and melanocytes, and generally lost from cells derived from squamous cell carcinomas or melanomas. The C-terminal alternatively spliced exon B is present in the p120ctn transcripts in the colon, intestine and prostate, but lost in several tumor tissues derived from these organs.

Function

Alternative products:Experimental confirmation may be lacking for some isoforms,Disease:May contribute to cell malignancy. Complete loss of expression was observed in approximately 10% of invasive ductal breast carcinomas investigated.,Domain:A possible nuclear localization signal exists in all isoforms where Asp-626--631-Arg are deleted.,Function:Binds to and inhibits the transcriptional repressor ZBTB33, which may lead to activation of target genes of the Wnt signaling pathway (By similarity). May associate with and regulate the cell adhesion properties of both C- and E-cadherins. Implicated both in cell transformation by SRC and in ligand-induced receptor signaling through the EGF, PDGF, CSF-1 and ERBB2 receptors. Promotes GLIS2 C-terminal cleavage.,induction:Induced in vascular endothelium by wounding. This effect is potentiated by prior laminar shear stress, which enhances wound closure.,PTM:Phosphorylated.,similarity:Belongs to the beta-catenin family.,similarity:Contains 10 ARM repeats.,subcellular location:Interaction with GLIS2 promotes nuclear translocation.,subunit:Belongs to a multiprotein cell-cell adhesion complex that also contains E-cadherin, alpha-catenin, beta-catenin, and gamma-catenin. Binds to the C-terminal fragment of PSEN1 and mutually competes for E-cadherin. Interacts with ZBTB33. Interacts with GLIS2.,tissue specificity:Expressed in vascular endothelium.,

Validation Data

Western Blot analysis of HEK293,mouse-brain,using primary antibody at 1:1000 dilution. Secondary antibody(catalog#:RS23920) was diluted at 1:10000

Contact information

Orders: order.cn@immunoway.com
Support: support.cn@immunoway.com
Telephone: 400-8787-807(China)
Website: <http://www.immunoway.com.cn>
Address: 2200 Ringwood Ave San Jose, CA 95131 USA



Please scan the QR code to access additional product information:

Catenin δ -1
(Phospho Ser252)
Rabbit pAb

For Research Use Only. Not for Use in Diagnostic Procedures.

[Antibody](#) | [ELISA Kits](#) | [Protein](#) | [Reagents](#)