

## Bim (Phospho Ser69) Rabbit pAb

CatalogNo: YP1276

### Key Features

#### Host Species

- Rabbit

#### Reactivity

- Human, Mouse

#### Applications

- WB

#### MW

- 22kD (Observed)

#### Isotype

- IgG

### Storage

**Storage\*** -15°C to -25°C/1 year (Do not lower than -25°C)

**Formulation** Liquid in PBS containing 50% glycerol, 0.5% BSA and 0.02% sodium azide.

### Recommended Dilution Ratios

WB 1:1000-2000

### Basic Information

**Clonality** Polyclonal

### Immunogen Information

**Immunogen** Synthesized phospho peptide around human Bim (Ser69)

**Specificity** This antibody detects endogenous levels of Human Mouse Bim (phospho-Ser69)

### Target Information

**Gene name** BCL2L11 BIM

**Protein Name**

Bim (Ser69)

Organism	Gene ID	UniProt ID
Human	<a href="#">10018</a> ;	<a href="#">O43521</a> ;
Mouse	<a href="#">12125</a> ;	<a href="#">O54918</a> ;
Rat	<a href="#">64547</a> ;	<a href="#">O88498</a> ;

**Cellular Localization**

Endomembrane system ; Peripheral membrane protein . Associated with intracytoplasmic membranes. .; [Isoform BimEL]: Mitochondrion. Translocates from microtubules to mitochondria on loss of cell adherence.; [Isoform BimL]: Mitochondrion.; [Isoform BimS]: Mitochondrion.; [Isoform Bim-alpha1]: Mitochondrion.

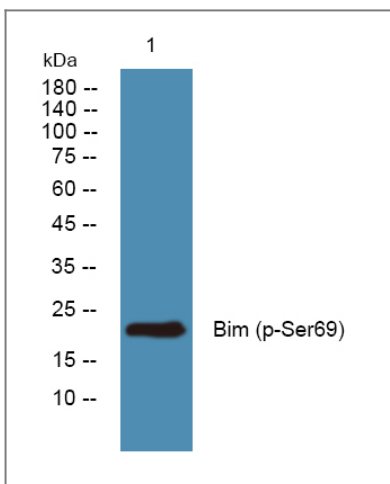
**Tissue specificity**

Isoform BimEL, isoform BimL and isoform BimS are the predominant isoforms and are widely expressed with tissue-specific variation. Isoform Bim-gamma is most abundantly expressed in small intestine and colon, and in lower levels in spleen, prostate, testis, heart, liver and kidney.

**Function**

Domain:The BH3 motif is required for Bcl-2 binding and cytotoxicity.,Function:Induces apoptosis. Isoform BimL is more potent than isoform BimEL. Isoform Bim-alpha1, isoform Bim-alpha2 and isoform Bim-alpha3 induce apoptosis, although less potent than the isoforms BimEL, BimL and BimS. Isoform Bim-gamma induces apoptosis.,similarity:Belongs to the Bcl-2 family.,subcellular location:Associated with intracytoplasmic membranes.,subunit:Forms heterodimers with a number of antiapoptotic Bcl-2 proteins including MCL1, BCL2, BCL2L1 isoform Bcl-X(L), BCL2A1/BFL-1, and BHRF1. Does not heterodimerize with proapoptotic proteins such as BAD, BOK, BAX or BAK.,tissue specificity:Isoform BimEL, isoform BimL and isoform BimS are the predominant isoforms and are ubiquitously expressed with a tissue-specific variation. Isoform Bim-gamma is most abundantly expressed in small intestine and colon, and in lower levels in spleen, prostate, testis, heart, liver and kidney.,

## Validation Data



Western blot analysis of lysates from U2OS cells, primary antibody was diluted at 1:1000, 4° over night

## Contact information

Orders: order.cn@immunoway.com  
Support: support.cn@immunoway.com  
Telephone: 400-8787-807(China)  
Website: http://www.immunoway.com.cn  
Address: 2200 Ringwood Ave San Jose, CA 95131 USA



Please scan the QR code  
to access additional  
product information:  
**Bim (Phospho  
Ser69) Rabbit pAb**

---

For Research Use Only. Not for Use in Diagnostic Procedures.

[Antibody](#) | [ELISA Kits](#) | [Protein](#) | [Reagents](#)