

## RAGE (Phospho Tyr161) Rabbit pAb

CatalogNo: YP1236 **Orthogonal Validated** 

### Key Features

#### Host Species

- Rabbit

#### Reactivity

- Human, Mouse, Rat

#### Applications

- IHC, IF, WB

#### MW

- 48kD (Observed)

#### Isotype

- IgG

### Storage

**Storage\*** -15°C to -25°C/1 year (Do not lower than -25°C)

**Formulation** Liquid in PBS containing 50% glycerol, 0.5% BSA and 0.02% sodium azide.

### Recommended Dilution Ratios

IHC 1:50-200

WB 1:500-2000

IF 1:50-200

### Basic Information

**Clonality** Polyclonal

### Immunogen Information

**Immunogen** Synthesized peptide derived from human MOK (Phospho-Tyr161)

**Specificity** This antibody detects endogenous phospho levels of MOK (Phospho-Tyr161) at Human:Y161, Mouse:Y161, Rat:Y161. The name of modified sites may be influenced by many factors, such as species (the modified site was not originally found in human samples) and the change of protein sequence (the previous protein sequence is incomplete, and the protein sequence may be prolonged with the development of protein sequencing technology). When naming, we will use the "numbers" in historical reference to keep the sites consistent with the reports. The antibody binds to the following modification sequence (lowercase letters are modification sites): TEyIS

---

## | Target Information

**Gene name** MOK RAGE RAGE1

**Protein Name** MAPK/MAK/MRK overlapping kinase

| Organism | Gene ID                | UniProt ID               |
|----------|------------------------|--------------------------|
| Human    | <a href="#">5891</a> ; | <a href="#">Q9UQ07</a> ; |
| Mouse    |                        | <a href="#">Q9WVS4</a> ; |

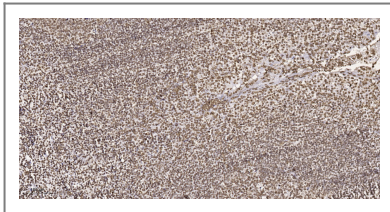
**Cellular Localization** Cytoplasm . Cell projection, cilium . Nucleus .

**Tissue specificity** Expressed in heart, brain, lung, kidney, and pancreas, and at very low levels in placenta, liver and skeletal muscle. Detected in retina.

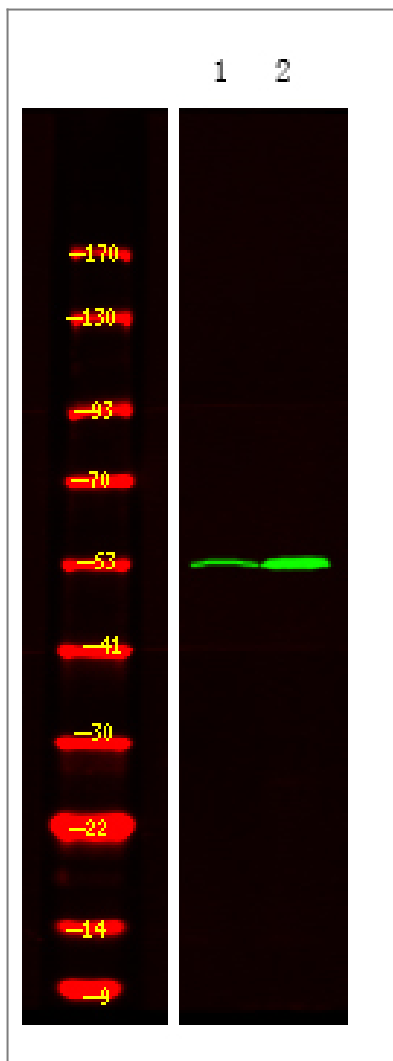
**Function** Catalytic activity:ATP + a protein = ADP + a phosphoprotein.,enzyme regulation:Phosphorylation appears to increase the enzymatic activity.,Function:Able to phosphorylate several exogenous substrates and to undergo autophosphorylation.,PTM:Autophosphorylated.,similarity:Belongs to the protein kinase superfamily. CMGC Ser/Thr protein kinase family. CDC2/CDKX subfamily.,similarity:Contains 1 protein kinase domain.,tissue specificity:Expressed in heart, brain, lung, kidney, and pancreas, and at very low levels in placenta, liver and skeletal muscle. Detected in retina.,

---

## | Validation Data



Immunohistochemical analysis of paraffin-embedded human tonsil. 1, Tris-EDTA,pH9.0 was used for antigen retrieval. 2 Antibody was diluted at 1:200(4° overnight.3,Secondary antibody was diluted at 1:200(room temperature, 45min).



Western Blot analysis of 1 HeLa cell, 2 LPS 100ng/mL 30min treated ,using primary antibody at 1:1000 dilution. Secondary antibody(catalog#:RS23920) was diluted at 1:10000

## Contact information

Orders: order.cn@immunoway.com  
Support: support.cn@immunoway.com  
Telephone: 400-8787-807(China)  
Website: <http://www.immunoway.com.cn>  
Address: 2200 Ringwood Ave San Jose, CA 95131 USA



Please scan the QR code to access additional product information:  
**RAGE (Phospho Tyr161) Rabbit pAb**

For Research Use Only. Not for Use in Diagnostic Procedures.

[Antibody](#) | [ELISA Kits](#) | [Protein](#) | [Reagents](#)