

## MAP2 (Phospho Thr1616) Rabbit pAb

CatalogNo: YP1233

### Key Features

#### Host Species

- Rabbit

#### Reactivity

- Human, Mouse, Rat

#### Applications

- IHC, IF, WB

#### MW

- 280kD (Observed)

#### Isotype

- IgG

### Storage

**Storage\*** -15°C to -25°C/1 year (Do not lower than -25°C)

**Formulation** Liquid in PBS containing 50% glycerol, 0.5% BSA and 0.02% sodium azide.

### Recommended Dilution Ratios

**IHC 1:50-200**

**WB 1:500-2000**

**IF 1:50-200**

### Basic Information

**Clonality** Polyclonal

### Immunogen Information

**Immunogen** Synthesized peptide derived from human MAP2 (Phospho-Thr1616)

**Specificity** This antibody detects endogenous phospho levels of MAP2 (Phospho-Thr1616) at Human:T1616, Mouse:T1620, Rat:T1622. The name of modified sites may be influenced by many factors, such as species (the modified site was not originally found in human samples) and the change of protein sequence (the previous protein sequence is incomplete, and the protein sequence may be prolonged with the development of protein sequencing technology). When naming, we will use the "numbers" in historical reference to keep the sites consistent with the reports. The antibody binds to the following modification sequence (lowercase letters are modification sites):PGtPG

## Target Information

**Gene name** MAP2  
**Protein Name** MAP2 (Phospho-Thr1616)

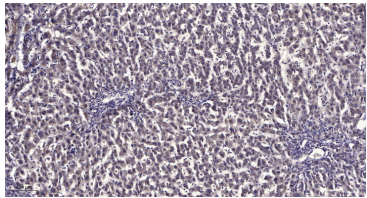
Organism	Gene ID	UniProt ID
Human	<a href="#">4133</a> ;	<a href="#">P11137</a> ;

**Cellular Localization** Cytoplasm, cytoskeleton . Cell projection, dendrite .

**Tissue specificity** Brain,Brain cortex,Epithelium,Pancreas,Testis,

**Function** Alternative products:Additional isoforms seem to exist,Function:The exact function of MAP2 is unknown but MAPs may stabilize the microtubules against depolymerization. They also seem to have a stiffening effect on microtubules.,PTM:MAP2A/c is phosphorylated. Phosphorylated upon DNA damage, probably by ATM or ATR.,similarity:Contains 3 Tau/MAP repeats.,similarity:Contains 4 Tau/MAP repeats.,

## Validation Data



Immunohistochemical analysis of paraffin-embedded human liver cancer. 1, Antibody was diluted at 1:200(4° overnight). 2, Tris-EDTA,pH9.0 was used for antigen retrieval. 3,Secondary antibody was diluted at 1:200(room temperature, 45min).

## Contact information

Orders: [order.cn@immunoway.com](mailto:order.cn@immunoway.com)  
Support: [support.cn@immunoway.com](mailto:support.cn@immunoway.com)  
Telephone: 400-8787-807(China)  
Website: <http://www.immunoway.com.cn>  
Address: 2200 Ringwood Ave San Jose, CA 95131 USA



Please scan the QR code to access additional product information:  
**MAP2 (Phospho Thr1616) Rabbit pAb**