

## eEF2 (Phospho Thr56) Rabbit pAb

CatalogNo: YP1215

### Key Features

#### Host Species

- Rabbit

#### Reactivity

- Human, Mouse, Rat

#### Applications

- WB, ELISA

#### MW

- 100kD (Observed)

#### Isotype

- IgG

### Storage

**Storage\*** -15°C to -25°C/1 year (Do not lower than -25°C)

**Formulation** Liquid in PBS containing 50% glycerol, 0.5% BSA and 0.02% sodium azide.

### Recommended Dilution Ratios

**WB 1:500-2000**

**ELISA 1:10000-20000**

### Basic Information

**Clonality** Polyclonal

### Immunogen Information

**Immunogen** Synthesized phospho derived from human eEF2 (Phospho-Thr56)

**Specificity** This detects endogenous levels of eEF2 (Phospho-Thr56). The name of modified sites may be influenced by many factors, such as species (the modified site was not originally found in human samples) and the change of protein sequence (the previous protein sequence is incomplete, and the protein sequence may be prolonged with the development of protein sequencing technology). When naming, we will use the "numbers" in historical reference to keep the sites consistent with the reports. The antibody binds to the following modification sequence (lowercase letters are modification sites): RFtDT

## Target Information

**Gene name** EEF2 EF2

**Protein Name** Elongation factor 2 (EF-2)

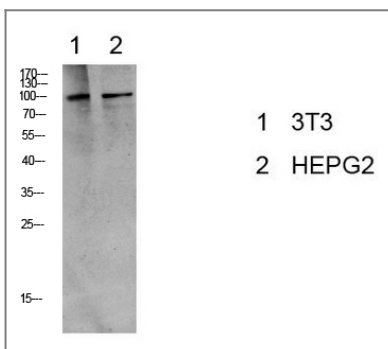
Organism	Gene ID	UniProt ID
Human	<a href="#">1938;</a>	<a href="#">P13639;</a>
Mouse	<a href="#">13629;</a>	<a href="#">P58252;</a>
Rat	<a href="#">29565;</a>	<a href="#">P05197;</a>

**Cellular Localization** Cytoplasm . Nucleus . Phosphorylation by CSK promotes cleavage and SUMOylation-dependent nuclear translocation of the C-terminal cleavage product. .

**Tissue specificity** Brain,Cajal-Retzius cell,Epithelium,Hepatocyte,Ovary,Periph

**Function** Function:This protein promotes the GTP-dependent translocation of the nascent protein chain from the A-site to the P-site of the ribosome.,PTM:Diphthamide is 2-[3-carboxyamido-3-(trimethyl-ammonio)propyl]histidine. Diphthamide can be ADP-ribosylated by diphtheria toxin and by Pseudomonas exotoxin A.,PTM:Phosphorylation by EF-2 kinase completely inactivates EF-2.,similarity:Belongs to the GTP-binding elongation factor family. EF-G/EF-2 subfamily.,subunit:Component of the mRNA surveillance SURF complex, at least composed of ERF1, ERF3 (ERF3A or ERF3B), EEF2, UPF1/RENT1, SMG1, SMG8 and SMG9.,

## Validation Data



Western blot analysis of various lysate, antibody was diluted at 1000. Secondary antibody(catalog#:RS0002) was diluted at 1:20000

## Contact information

Orders: [order.cn@immunoway.com](mailto:order.cn@immunoway.com)  
Support: [support.cn@immunoway.com](mailto:support.cn@immunoway.com)  
Telephone: 400-8787-807(China)  
Website: <http://www.immunoway.com.cn>  
Address: 2200 Ringwood Ave San Jose, CA 95131 USA



Please scan the QR code to access additional product information:  
**eEF2 (Phospho Thr56) Rabbit pAb**

