

# Sodium Potassium ATPase alpha-1 (Phospho Tyr260) Rabbit pAb

CatalogNo: YP1212 **Orthogonal Validated** 

## Key Features

### Host Species

- Rabbit

### Reactivity

- Human, Mouse, Rat

### Applications

- WB, ELISA, IHC

### MW

- 115kD (Observed)

### Isotype

- IgG

## Storage

**Storage\*** -15°C to -25°C/1 year (Do not lower than -25°C)

**Formulation** Liquid in PBS containing 50% glycerol, 0.5% BSA and 0.02% sodium azide.

## Recommended Dilution Ratios

**WB 1:500-2000**

**IHC 1:50-300**

**ELISA 1:2000-20000**

## Basic Information

**Clonality** Polyclonal

## Immunogen Information

**Immunogen** Synthetic peptide from human protein at AA range: 230-290

## Specificity

The antibody detects endogenous Sodium Potassium ATPase alpha-1 when Phospho occurs at Tyr260).The name of modified sites may be influenced by many factors, such as species (the modified site was not originally found in human samples) and the change of protein sequence (the previous protein sequence is incomplete, and the protein sequence may be prolonged with the development of protein sequencing technology). When naming, we will use the "numbers" in historical reference to keep the sites consistent with the reports. The antibody binds to the following modification sequence (lowercase letters are modification sites):VVyTG

## Target Information

**Gene name** ATP1A1

**Protein Name** Sodium/potassium-transporting ATPase subunit alpha-1 (Na(+)/K(+) ATPase alpha-1 subunit) (Sodium pump subunit alpha-1)

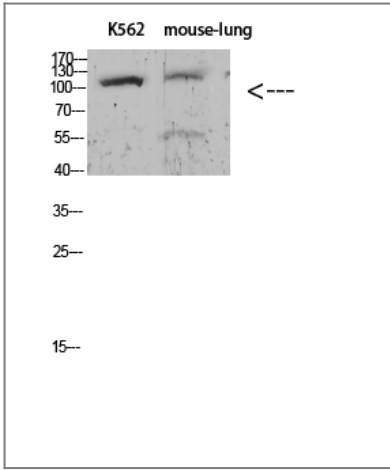
Organism	Gene ID	UniProt ID
Human	<a href="#">476;</a>	<a href="#">P05023;</a>
Mouse		<a href="#">Q8VDN2;</a>
Rat		<a href="#">P06685;</a>

**Cellular Localization** Basolateral cell membrane ; Multi-pass membrane protein . Cell membrane, sarcolemma ; Multi-pass membrane protein . Cell projection, axon . Melanosome . Identified by mass spectrometry in melanosome fractions from stage I to stage IV. .

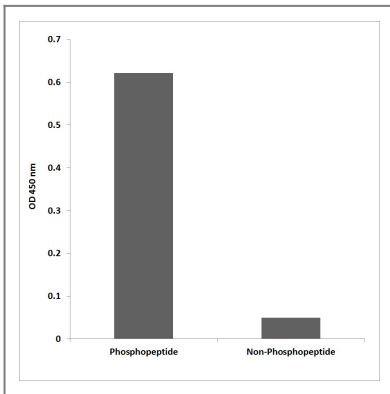
**Tissue specificity** Brain,Cerebellum,Cervix,Placenta,Retinal pigment epithelium

**Function** Catalytic activity:ATP + H(2)O + Na(+)(In) + K(+)(Out) = ADP + phosphate + Na(+)(Out) + K(+)(In).,Function:This is the catalytic component of the active enzyme, which catalyzes the hydrolysis of ATP coupled with the exchange of sodium and potassium ions across the plasma membrane. This action creates the electrochemical gradient of sodium and potassium ions, providing the energy for active transport of various nutrients.,PTM:Phosphorylation on Tyr-10 modulates pumping activity.,similarity:Belongs to the cation transport ATPase (P-type) family.,similarity:Belongs to the cation transport ATPase (P-type) family. Type IIC subfamily.,subcellular location:Identified by mass spectrometry in melanosome fractions from stage I to stage IV.,subunit:Composed of three subunits: alpha (catalytic), beta and gamma. Binds the HLA class II histocompatibility antigen, DR1.,

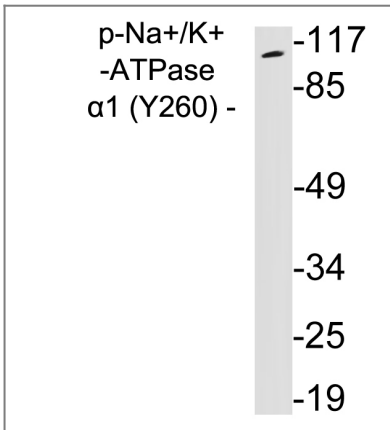
## Validation Data



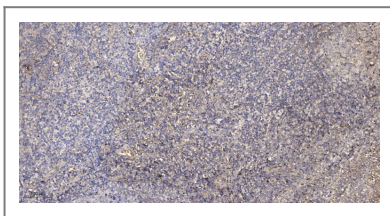
Western blot analysis of KB Hela lysate, antibody was diluted at 1000. Secondary antibody(catalog#:RS0002) was diluted at 1:20000



Enzyme-Linked Immunosorbent Assay (Phospho-ELISA) for Immunogen Phosphopeptide (Phospho-left) and Non-Phosphopeptide (Phospho-right), using Na<sup>+</sup>/K<sup>+</sup>-ATPase α1 (Phospho-Tyr260) Antibody



Western blot analysis of lysates from 293 cells treated with PMA, using phospho-Na<sup>+</sup>/K<sup>+</sup>-ATPase α1 (Phospho-Tyr260) antibody.



Immunohistochemical analysis of paraffin-embedded human tonsil. 1, Antibody was diluted at 1:200(4° overnight). 2, Tris-EDTA,pH9.0 was used for antigen retrieval. 3,Secondary antibody was diluted at 1:200(room temperature, 45min).

## Contact information

Orders: order.cn@immunoway.com  
Support: support.cn@immunoway.com  
Telephone: 400-8787-807(China)  
Website: <http://www.immunoway.com.cn>  
Address: 2200 Ringwood Ave San Jose, CA 95131 USA



Please scan the QR code  
to access additional  
product information:  
**Sodium Potassium  
ATPase alpha-1  
(Phospho Tyr260)  
Rabbit pAb**

---

For Research Use Only. Not for Use in Diagnostic Procedures.

[Antibody](#) | [ELISA Kits](#) | [Protein](#) | [Reagents](#)