

## Tensin-1 (Phospho Tyr1326) Rabbit pAb

CatalogNo: YP1198

### Key Features

#### Host Species

- Rabbit

#### Reactivity

- Human, Mouse

#### Applications

- WB, ELISA

#### MW

- 185kD (Observed)

#### Isotype

- IgG

### Storage

**Storage\*** -15°C to -25°C/1 year (Do not lower than -25°C)

**Formulation** Liquid in PBS containing 50% glycerol, 0.5% BSA and 0.02% sodium azide.

### Recommended Dilution Ratios

**WB 1:500-1:2000**

**ELISA 1:20000**

**Not yet tested in other applications.**

### Basic Information

**Clonality** Polyclonal

### Immunogen Information

**Immunogen** Synthesized phospho-peptide around the phosphorylation site of human Tensin-1 (phospho Tyr1326)

**Specificity** Phospho-Tensin-1 (Y1326) Polyclonal Antibody detects endogenous levels of Tensin-1 protein only when phosphorylated at Y1326. The name of modified sites may be influenced by many factors, such as species (the modified site was not originally found in human samples) and the change of protein sequence (the previous protein sequence is incomplete, and the protein sequence may be prolonged with the development of protein sequencing technology). When naming, we will use the "numbers" in historical reference to keep the sites consistent with the reports. The antibody binds to the following modification sequence (lowercase letters are modification sites):GGyST

## Target Information

**Gene name** TNS1

**Protein Name** Tensin-1

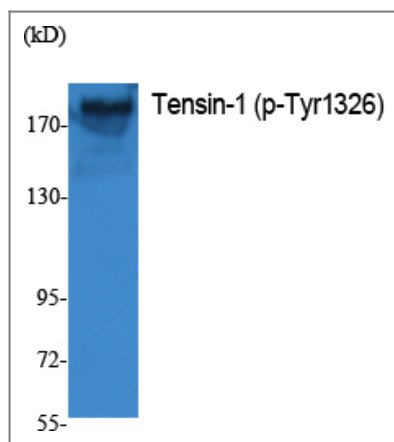
Organism	Gene ID	UniProt ID
Human	<a href="#">7145;</a>	<a href="#">Q9HBL0;</a>

**Cellular Localization** Cell surface . Cell junction, focal adhesion . Cytoplasm, cytoskeleton . Localized at cell periphery preferentially to fibrillar adhesions than focal adhesions. Translocates from the cell edge to cell center in an ITGB1BP1-dependent manner.

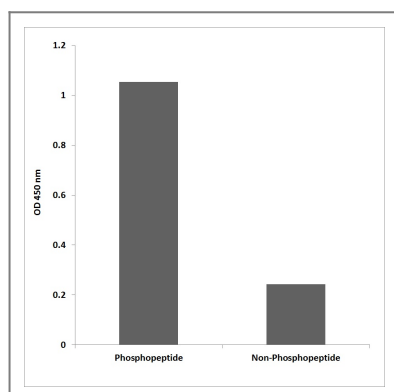
**Tissue specificity** Ubiquitous.

**Function** Function:May be involved in cell migration, cartilage development and in linking signal transduction pathways to the cytoskeleton.,PTM:Rapidly cleaved by calpain II.,PTM:Tyrosine phosphorylated.,similarity:Contains 1 C2 tensin-type domain.,similarity:Contains 1 phosphatase tensin-type domain.,similarity:Contains 1 SH2 domain.,subunit:Binds to actin filaments and interacts with phosphotyrosine-containing proteins. Interacts with STARD8.,tissue specificity:Ubiquitous.,

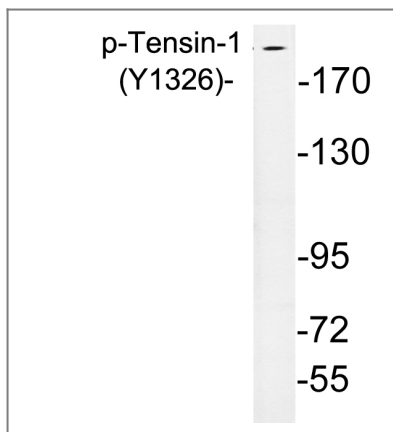
## Validation Data



Western Blot analysis of extracts from K562 cells, using Phospho-Tensin-1 (Y1326) Polyclonal Antibody.



Enzyme-Linked Immunosorbent Assay (Phospho-ELISA) for Immunogen Phosphopeptide (Phospho-left) and Non-Phosphopeptide (Phospho-right), using Tensin-1 (Phospho-Tyr1326) Antibody



Western blot analysis of lysates from A10 cells, using phospho-Thrensin-1 (Phospho-Tyr1326) antibody.

## Contact information

Orders: [order.cn@immunoway.com](mailto:order.cn@immunoway.com)  
Support: [support.cn@immunoway.com](mailto:support.cn@immunoway.com)  
Telephone: 400-8787-807(China)  
Website: <http://www.immunoway.com.cn>  
Address: 2200 Ringwood Ave San Jose, CA 95131 USA



Please scan the QR code to access additional product information:  
**Tensin-1 (Phospho Tyr1326) Rabbit pAb**

For Research Use Only. Not for Use in Diagnostic Procedures.

[Antibody](#) | [ELISA Kits](#) | [Protein](#) | [Reagents](#)