

Hck (Phospho Tyr410) Rabbit pAb

CatalogNo: YP1181

Key Features

Host Species

- Rabbit

Reactivity

- Human, Mouse, Rat

Applications

- IHC, IF, ELISA

MW

- 60kD (Calculated)

Isotype

- IgG

Storage

Storage* -15°C to -25°C/1 year (Do not lower than -25°C)

Formulation Liquid in PBS containing 50% glycerol, 0.5% BSA and 0.02% sodium azide.

Recommended Dilution Ratios

IHC 1:100-1:300

IF 1:200-1:1000

ELISA 1:20000

Not yet tested in other applications.

Basic Information

Clonality Polyclonal

Immunogen Information

Immunogen The antiserum was produced against synthesized peptide derived from human HCK around the phosphorylation site of Tyr410. AA range:381-430

Specificity

Phospho-Hck (Y410) Polyclonal Antibody detects endogenous levels of Hck protein only when phosphorylated at Y410. The name of modified sites may be influenced by many factors, such as species (the modified site was not originally found in human samples) and the change of protein sequence (the previous protein sequence is incomplete, and the protein sequence may be prolonged with the development of protein sequencing technology). When naming, we will use the "numbers" in historical reference to keep the sites consistent with the reports. The antibody binds to the following modification sequence (lowercase letters are modification sites):NEYTA

| Target Information

Gene name HCK

Protein Name Tyrosine-protein kinase HCK

Organism	Gene ID	UniProt ID
Human	3055 ;	P08631 ;
Mouse	15162 ;	P08103 ;
Rat	25734 ;	P50545 ;

Cellular Localization

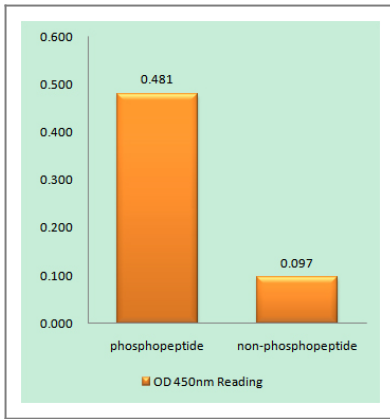
[Isoform 1]: Lysosome. Membrane; Lipid-anchor. Cell projection, podosome membrane; Lipid-anchor. Cytoplasm, cytosol. Associated with specialized secretory lysosomes called azurophil granules. At least half of this isoform is found in the cytoplasm, some of this fraction is myristoylated.; [Isoform 2]: Cell membrane ; Lipid-anchor . Membrane, caveola ; Lipid-anchor . Cell junction, focal adhesion . Cytoplasm, cytoskeleton . Golgi apparatus . Cytoplasmic vesicle . Lysosome . Nucleus . 20% of this isoform is associated with caveolae. Localization at the cell membrane and at caveolae requires palmitoylation at Cys-3. Colocalizes with the actin cytoskeleton at focal adhesions.; Cytoplasmic vesicle, secretory vesicle. Cytoplasm, cytosol.

Tissue specificity Detected in monocytes and neutrophils (at protein level). Expressed predominantly in cells of the myeloid and B-lymphoid lineages. Highly expressed in granulocytes. Detected in tonsil.

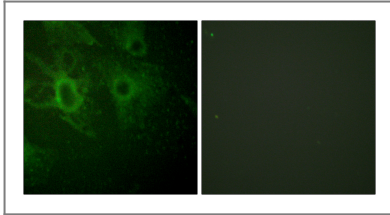
Function

Catalytic activity:ATP + a [protein]-L-tyrosine = ADP + a [protein]-L-tyrosine phosphate.,Domain:The SH3 domain mediates binding to HIV-1 Nef.,Function:May serve as part of a signaling pathway coupling the Fc receptor to the activation of the respiratory burst. May also contribute to neutrophil migration and may regulate the degranulation process of neutrophils.,PTM:Isoform p59-HCK contains a N-myristoyl glycine at position 3 (By similarity). Isoform p59-HCK contains a S-palmitoyl cysteine at position 3.,similarity:Belongs to the protein kinase superfamily. Tyr protein kinase family. SRC subfamily.,similarity:Contains 1 protein kinase domain.,similarity:Contains 1 SH2 domain.,similarity:Contains 1 SH3 domain.,subunit:May interact (via SH3 domain) with HIV-1 Nef and Vif. This interaction would stimulates its tyrosine-kinase activity. Interacts (via SH3 domain) with HEV ORF3 protein.,tissue specificity:Expressed predominantly in cells of the myeloid and B-lymphoid lineages.,

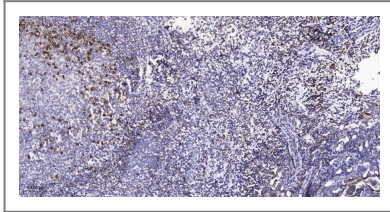
Validation Data



Enzyme-Linked Immunosorbent Assay (Phospho-ELISA) for Immunogen Phosphopeptide (Phospho-left) and Non-Phosphopeptide (Phospho-right), using HCK (Phospho-Tyr410) Antibody



Immunofluorescence analysis of HeLa cells, using HCK (Phospho-Tyr410) Antibody. The picture on the right is blocked with the phospho peptide.



Immunohistochemical analysis of paraffin-embedded human tonsil. 1, Antibody was diluted at 1:200(4° overnight). 2, Tris-EDTA,pH9.0 was used for antigen retrieval. 3,Secondary antibody was diluted at 1:200(room temperature, 45min).

Contact information

Orders: order.cn@immunoway.com
Support: support.cn@immunoway.com
Telephone: 400-8787-807(China)
Website: <http://www.immunoway.com.cn>
Address: 2200 Ringwood Ave San Jose, CA 95131 USA



Please scan the QR code to access additional product information:
Hck (Phospho Tyr410) Rabbit pAb

For Research Use Only. Not for Use in Diagnostic Procedures.

[Antibody](#) | [ELISA Kits](#) | [Protein](#) | [Reagents](#)