

Fos B (Phospho Ser27) Rabbit pAb

CatalogNo: YP1178

Orthogonal Validated 

Key Features

Host Species

- Rabbit

Reactivity

- Human, Mouse

Applications

- WB, IHC, IF, ELISA

MW

- 35kD (Observed)

Isotype

- IgG

Recommended Dilution Ratios

WB 1:500-1:2000**IHC 1:100-1:300****IF 1:200-1:1000****ELISA 1:5000****Not yet tested in other applications.**

Storage

Storage*

-15°C to -25°C/1 year (Do not lower than -25°C)

Formulation

Liquid in PBS containing 50% glycerol, 0.5% BSA and 0.02% sodium azide.

Basic Information

Clonality

Polyclonal

Immunogen Information

Immunogen

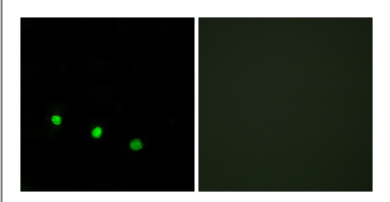
The antiserum was produced against synthesized peptide derived from human FosB around the phosphorylation site of Ser27. AA range: 12-61

Specificity Phospho-Fos B (S27) Polyclonal Antibody detects endogenous levels of Fos B protein only when phosphorylated at S27. The name of modified sites may be influenced by many factors, such as species (the modified site was not originally found in human samples) and the change of protein sequence (the previous protein sequence is incomplete, and the protein sequence may be prolonged with the development of protein sequencing technology). When naming, we will use the "numbers" in historical reference to keep the sites consistent with the reports. The antibody binds to the following modification sequence (lowercase letters are modification sites):YLsSV

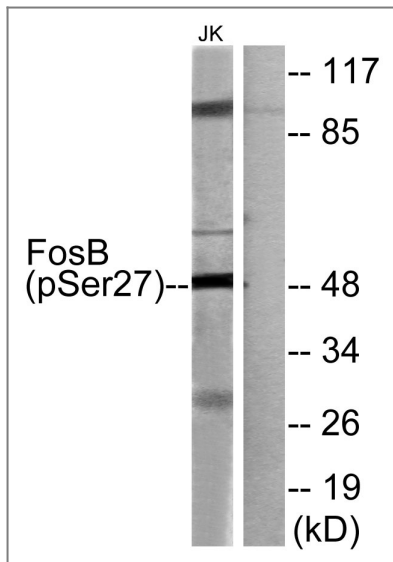
| Target Information

Gene name	FOSB		
Protein Name	Protein fosB		
	Organism	Gene ID	UniProt ID
	Human	2354;	P53539;
	Mouse	14282;	P13346;
Cellular Localization	Nucleus .		
Tissue specificity	[Isoform 11]: Expressed in the nucleus accumbens of the striatum (at protein level).		
Function	Function:FosB interacts with Jun proteins enhancing their DNA binding activity.,similarity:Belongs to the bZIP family.,similarity:Belongs to the bZIP family. Fos subfamily.,similarity:Contains 1 bZIP domain.,subunit:Heterodimer.,		

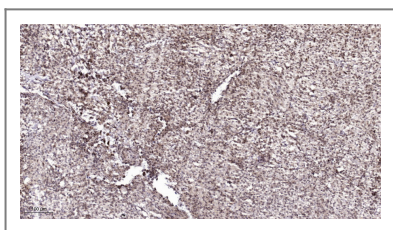
| Validation Data



Immunofluorescence analysis of HUVEC cells treated with EGF 200nM 5', using FosB (Phospho-Ser27) Antibody. The picture on the right is blocked with the phospho peptide.



Western blot analysis of FosB (Phospho-Ser27) Antibody. The lane on the right is blocked with the FosB (Phospho-Ser27) peptide.



Immunohistochemical analysis of paraffin-embedded human Colon cancer. 1, Antibody was diluted at 1:200(4° overnight). 2, Tris-EDTA,pH9.0 was used for antigen retrieval. 3,Secondary antibody was diluted at 1:200(room temperature, 45min).

Contact information

Orders: order.cn@immunoway.com
 Support: support.cn@immunoway.com
 Telephone: 400-8787-807(China)
 Website: <http://www.immunoway.com.cn>
 Address: 2200 Ringwood Ave San Jose, CA 95131 USA



Please scan the QR code to access additional product information:

Fos B (Phospho Ser27) Rabbit pAb

For Research Use Only. Not for Use in Diagnostic Procedures.

[Antibody](#) | [ELISA Kits](#) | [Protein](#) | [Reagents](#)