

TGFβ RIII (Phospho Thr842) Rabbit pAb

CatalogNo: YP1161

Key Features

Host Species

- Rabbit

Reactivity

- Human, Mouse, Rat

Applications

- IHC, IF, ELISA

MW

- 93kD (Calculated)

Isotype

- IgG

Storage

Storage* -15°C to -25°C/1 year (Do not lower than -25°C)

Formulation Liquid in PBS containing 50% glycerol, 0.5% BSA and 0.02% sodium azide.

Recommended Dilution Ratios

IHC 1:100-1:300

IF 1:200-1:1000

ELISA 1:5000

Not yet tested in other applications.

Basic Information

Clonality Polyclonal

Immunogen Information

Immunogen The antiserum was produced against synthesized peptide derived from human TGF beta Receptor III around the phosphorylation site of Thr842. AA range:801-850

Specificity

Phospho-TGFβ RIII (T842) Polyclonal Antibody detects endogenous levels of TGFβ RIII protein only when phosphorylated at T842. The name of modified sites may be influenced by many factors, such as species (the modified site was not originally found in human samples) and the change of protein sequence (the previous protein sequence is incomplete, and the protein sequence may be prolonged with the development of protein sequencing technology). When naming, we will use the "numbers" in historical reference to keep the sites consistent with the reports. The antibody binds to the following modification sequence (lowercase letters are modification sites): QStPC

Target Information

Gene name TGFBR3

Protein Name Transforming growth factor beta receptor type 3

Organism	Gene ID	UniProt ID
Human	7049;	Q03167;
Mouse	21814;	O88393;
Rat	29610;	P26342;

Cellular Localization

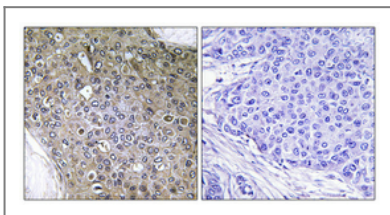
Secreted. Secreted, extracellular space. Cell membrane ; Single-pass type I membrane protein . Exists both as a membrane-bound form and as soluble form in serum and in the extracellular matrix.

Tissue specificity Blood,Brain,Placenta,Tongue,

Function

Function: Binds to TGF-beta. Could be involved in capturing and retaining TGF-beta for presentation to the signaling receptors.,PTM: Extensively modified by glycosaminoglycan groups (GAG).,similarity: Contains 1 ZP domain.,subcellular location: Exists both as a membrane-bound form and as soluble form in serum and in the extracellular matrix.,subunit: Interacts with TCTEX1D4.,

Validation Data



Immunohistochemical analysis of paraffin-embedded Human breast cancer. Antibody was diluted at 1:100(4° overnight). High-pressure and temperature Tris-EDTA,pH8.0 was used for antigen retrieval. Negative control (right) obtained from antibody was pre-absorbed by immunogen peptide.

Contact information

Orders: order.cn@immunoway.com
Support: support.cn@immunoway.com
Telephone: 400-8787-807(China)
Website: <http://www.immunoway.com.cn>
Address: 2200 Ringwood Ave San Jose, CA 95131 USA



Please scan the QR code to access additional product information:
TGF β RIII (Phospho Thr842) Rabbit pAb

For Research Use Only. Not for Use in Diagnostic Procedures.

[Antibody](#) | [ELISA Kits](#) | [Protein](#) | [Reagents](#)