

Syndecan-4 (Phospho Ser179) Rabbit pAb

CatalogNo: YP1150

Key Features

Host Species

- Rabbit

Reactivity

- Human, Mouse, Rat

Applications

- IHC, IF, ELISA

MW

- 22kD (Calculated)

Isotype

- IgG

Storage

Storage* -15°C to -25°C/1 year (Do not lower than -25°C)

Formulation Liquid in PBS containing 50% glycerol, 0.5% BSA and 0.02% sodium azide.

Recommended Dilution Ratios

IHC 1:100-1:300

IF 1:200-1:1000

ELISA 1:20000

Not yet tested in other applications.

Basic Information

Clonality Polyclonal

Immunogen Information

Immunogen The antiserum was produced against synthesized peptide derived from human Syndecan4 around the phosphorylation site of Ser179. AA range:145-194

Specificity

Phospho-Syndecan-4 (S179) Polyclonal Antibody detects endogenous levels of Syndecan-4 protein only when phosphorylated at S179. The name of modified sites may be influenced by many factors, such as species (the modified site was not originally found in human samples) and the change of protein sequence (the previous protein sequence is incomplete, and the protein sequence may be prolonged with the development of protein sequencing technology). When naming, we will use the "numbers" in historical reference to keep the sites consistent with the reports. The antibody binds to the following modification sequence (lowercase letters are modification sites):EGsYD

Target Information

Gene name SDC4

Protein Name Syndecan-4

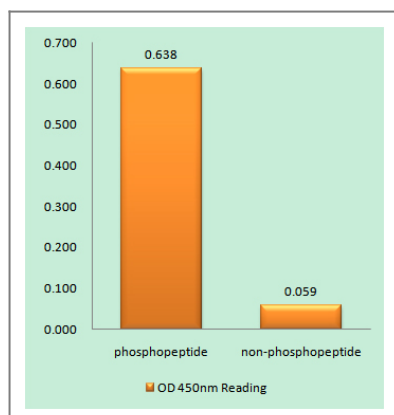
Organism	Gene ID	UniProt ID
Human	6385 ;	P31431 ;
Mouse	20971 ;	O35988 ;
Rat	24771 ;	P34901 ;

Cellular Localization [Isoform 1]: Membrane ; Single-pass type I membrane protein . Secreted . Shedding of the ectodomain produces a soluble form. . ; [Isoform 2]: Secreted.

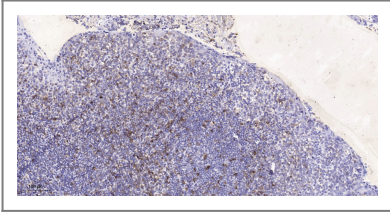
Tissue specificity Expressed in epithelial and fibroblastic cells.

Function Function:Cell surface proteoglycan that bears heparan sulfate.,Function:Cell surface proteoglycan.,similarity:Belongs to the syndecan proteoglycan family.,subunit:Homodimer. Interacts with CDCP1, with GIPC PDZ domain and with NUDT16L1/SDOS (By similarity). Interacts with SDCBP.,tissue specificity:Expressed in epithelial and fibroblastic cells.,

Validation Data



Enzyme-Linked Immunosorbent Assay (Phospho-ELISA) for Immunogen Phosphopeptide (Phospho-left) and Non-Phosphopeptide (Phospho-right), using Syndecan4 (Phospho-Ser179) Antibody



Immunohistochemical analysis of paraffin-embedded human tonsil. 1, Antibody was diluted at 1:200(4° overnight). 2, Tris-EDTA,pH9.0 was used for antigen retrieval. 3,Secondary antibody was diluted at 1:200(room temperature, 45min).

| Contact information

Orders: order.cn@immunoway.com
Support: support.cn@immunoway.com
Telephone: 400-8787-807(China)
Website: <http://www.immunoway.com.cn>
Address: 2200 Ringwood Ave San Jose, CA 95131 USA



Please scan the QR code to access additional product information:
Syndecan-4
(Phospho Ser179)
Rabbit pAb

For Research Use Only. Not for Use in Diagnostic Procedures.

[Antibody](#) | [ELISA Kits](#) | [Protein](#) | [Reagents](#)