

## DDX5 (Phospho Tyr593) Rabbit pAb

CatalogNo: YP1144

### Key Features

#### Host Species

- Rabbit

#### Reactivity

- Human, Mouse, Rat

#### Applications

- WB, IHC, IF, ELISA

#### MW

- 69kD (Calculated)

#### Isotype

- IgG

### Storage

**Storage\*** -15°C to -25°C/1 year (Do not lower than -25°C)

**Formulation** Liquid in PBS containing 50% glycerol, 0.5% BSA and 0.02% sodium azide.

### Recommended Dilution Ratios

**WB 1:500-1:2000**

**IHC 1:100-1:300**

**IF 1:200-1:1000**

**ELISA 1:10000**

**Not yet tested in other applications.**

### Basic Information

**Clonality** Polyclonal

### Immunogen Information

**Immunogen** The antiserum was produced against synthesized peptide derived from human DDX5/DEAD-box Protein 5 around the phosphorylation site of Tyr593. AA range:565-614

## Specificity

Phospho-p68 RNA Helicase (Y593) Polyclonal Antibody detects endogenous levels of p68 RNA Helicase protein only when phosphorylated at Y593. The name of modified sites may be influenced by many factors, such as species (the modified site was not originally found in human samples) and the change of protein sequence (the previous protein sequence is incomplete, and the protein sequence may be prolonged with the development of protein sequencing technology). When naming, we will use the "numbers" in historical reference to keep the sites consistent with the reports. The antibody binds to the following modification sequence (lowercase letters are modification sites): QAYAY

## Target Information

**Gene name** DDX5

**Protein Name** Probable ATP-dependent RNA helicase DDX5

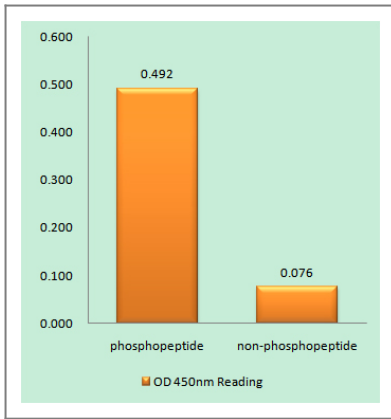
Organism	Gene ID	UniProt ID
Human	<a href="#">1655</a> ;	<a href="#">P17844</a> ;
Mouse		<a href="#">Q61656</a> ;

**Cellular Localization** Nucleus . Nucleus, nucleolus . Cytoplasm . During the G0 phase, predominantly located in the nucleus. Cytoplasmic levels increase during the G1/S phase. During the M phase, located at the vicinity of the condensed chromosomes. At G1, localizes in the cytoplasm. .

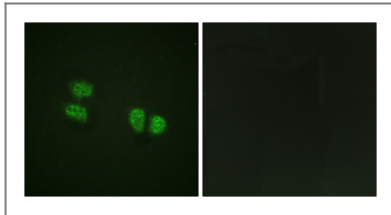
**Tissue specificity** Aorta endothelial cell, Epithelium, Human esophagus tumor, Muscle,

**Function** Function: RNA-dependent ATPase activity. The rate of ATP hydrolysis is highly stimulated by single-stranded RNA. May be involved in pre-mRNA splicing., PTM: Arg-502 is dimethylated, probably to asymmetric dimethylarginine., similarity: Belongs to the DEAD box helicase family., similarity: Belongs to the DEAD box helicase family. DDX5/DBP2 subfamily., similarity: Contains 1 helicase ATP-binding domain., similarity: Contains 1 helicase C-terminal domain., subunit: Identified in the spliceosome C complex, at least composed of AQR, C19orf29, CDC40, CDC5L, CRNKL1, DDX23, DDX41, DDX48, DDX5, DGCR14, DHX35, DHX38, DHX8, EFTUD2, FRG1, GPATC1, HNRPA1, HNRPA2B1, HNRPA3, HNRPC, HNRPF, HNRPH1, HNRPK, HNRPM, HNRPR, HNRPU, KIAA1160, KIAA1604, LSM2, LSM3, MAGOH, MORG1, PABPC1, PLRG1, PNN, PPIE, PPIL1, PPIL3, PPWD1, PRPF19, PRPF4B, PRPF6, PRPF8, RALY, RBM22, RBM8A, RBMX, SART1, SF3A1, SF3A2, SF3A3, SF3B1, SF3B2, SF3B3, SFRS1, SKIV2L2, SNRNP200, SNRNP40, SNRPA1, SNRPB, SNRPB2, SNRPD1, SNRPD2, SNRPD3, SNRPE, SNRPF, SNRPG, SNW1, SRRM1, SRRM2, SYF2, SYNCRIP, TFIP11, THOC4, U2AF1, XAB2 and ZCCHC8.,

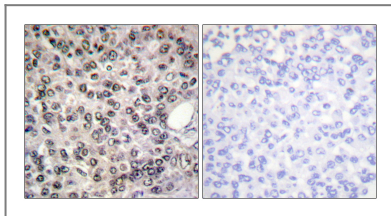
## Validation Data



Enzyme-Linked Immunosorbent Assay (Phospho-ELISA) for Immunogen Phosphopeptide (Phospho-left) and Non-Phosphopeptide (Phospho-right), using DDX5/DEAD-box Protein 5 (Phospho-Tyr593) Antibody



Immunofluorescence analysis of HeLa cells, using DDX5/DEAD-box Protein 5 (Phospho-Tyr593) Antibody. The picture on the right is blocked with the phospho peptide.



Immunohistochemistry analysis of paraffin-embedded human breast carcinoma, using DDX5/DEAD-box Protein 5 (Phospho-Tyr593) Antibody. The picture on the right is blocked with the phospho peptide.

## Contact information

Orders: [order.cn@immunoway.com](mailto:order.cn@immunoway.com)  
 Support: [support.cn@immunoway.com](mailto:support.cn@immunoway.com)  
 Telephone: 400-8787-807(China)  
 Website: <http://www.immunoway.com.cn>  
 Address: 2200 Ringwood Ave San Jose, CA 95131 USA



Please scan the QR code to access additional product information:  
**DDX5 (Phospho Tyr593) Rabbit pAb**

For Research Use Only. Not for Use in Diagnostic Procedures.

[Antibody](#) | [ELISA Kits](#) | [Protein](#) | [Reagents](#)