

## DAPK1 (Phospho Ser308) Rabbit pAb

CatalogNo: YP1141

### Key Features

#### Host Species

- Rabbit

#### Reactivity

- Human, Mouse

#### Applications

- IHC, IF, ELISA

#### MW

- 160kD (Calculated)

#### Isotype

- IgG

### Recommended Dilution Ratios

IHC 1:100-1:300

IF 1:200-1:1000

ELISA 1:10000

Not yet tested in other applications.

### Storage

#### Storage\*

-15°C to -25°C/1 year (Do not lower than -25°C)

#### Formulation

Liquid in PBS containing 50% glycerol, 0.5% BSA and 0.02% sodium azide.

### Basic Information

#### Clonality

Polyclonal

### Immunogen Information

#### Immunogen

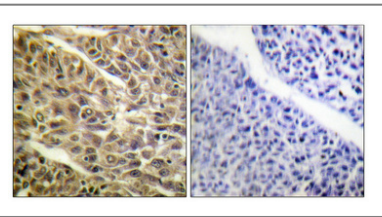
The antiserum was produced against synthesized peptide derived from human DAPK1 around the phosphorylation site of Ser308. AA range: 274-323

**Specificity** Phospho-DAPK1 (S308) Polyclonal Antibody detects endogenous levels of DAPK1 protein only when phosphorylated at S308. The name of modified sites may be influenced by many factors, such as species (the modified site was not originally found in human samples) and the change of protein sequence (the previous protein sequence is incomplete, and the protein sequence may be prolonged with the development of protein sequencing technology). When naming, we will use the "numbers" in historical reference to keep the sites consistent with the reports. The antibody binds to the following modification sequence (lowercase letters are modification sites):KQsVR

## Target Information

Gene name	DAPK1		
Protein Name	Death-associated protein kinase 1		
	Organism	Gene ID	UniProt ID
	Human	<a href="#">1612</a> ;	<a href="#">P53355</a> ;
	Mouse	<a href="#">69635</a> ;	<a href="#">Q80YE7</a> ;
Cellular Localization	[Isoform 1]: Cytoplasm. Cytoplasm, cytoskeleton. Colocalizes with MAP1B in the microtubules and cortical actin fibers.; [Isoform 2]: Cytoplasm. Cytoplasm, cytoskeleton.		
Tissue specificity	Isoform 2 is expressed in normal intestinal tissue as well as in colorectal carcinomas.		
Function	Catalytic activity:ATP + a protein = ADP + a phosphoprotein.,cofactor:Magnesium.,enzyme regulation:Negatively regulated by autophosphorylation on Ser-308.,Function:Calcium/calmodulin-dependent serine/threonine kinase which acts as a positive regulator of apoptosis.,induction:Up-regulated following treatment with interferon-gamma.,similarity:Belongs to the protein kinase superfamily.,similarity:Belongs to the protein kinase superfamily. CAMK Ser/Thr protein kinase family. DAP kinase subfamily.,similarity:Contains 1 death domain.,similarity:Contains 1 protein kinase domain.,similarity:Contains 10 ANK repeats.,subcellular location:Colocalizes with the actin filament system.,		

## Validation Data



Immunohistochemical analysis of paraffin-embedded Human lung cancer. Antibody was diluted at 1:100(4° overnight). High-pressure and temperature Tris-EDTA,pH8.0 was used for antigen retrieval. Negative contrl (right) obtained from antibody was pre-absorbed by immunogen peptide.

## Contact information

Orders: order.cn@immunoway.com  
Support: support.cn@immunoway.com  
Telephone: 400-8787-807(China)  
Website: <http://www.immunoway.com.cn>  
Address: 2200 Ringwood Ave San Jose, CA 95131 USA



Please scan the QR code  
to access additional  
product information:  
**DAPK1 (Phospho  
Ser308) Rabbit pAb**

---

For Research Use Only. Not for Use in Diagnostic Procedures.

[Antibody](#) | [ELISA Kits](#) | [Protein](#) | [Reagents](#)