

## AP-1 (Phospho Thr231) Rabbit pAb

CatalogNo: YP1139

### Key Features

#### Host Species

- Rabbit

#### Reactivity

- Human, Mouse, Rat

#### Applications

- WB, IHC, IF, ELISA

#### MW

- 39-42kD (Observed)

#### Isotype

- IgG

### Recommended Dilution Ratios

**IHC 1:100-1:300**

**WB 1:1000-1:5000**

**IF 1:200-1:1000**

**ELISA 1:10000**

**Not yet tested in other applications.**

### Storage

**Storage\*** -15°C to -25°C/1 year (Do not lower than -25°C)

**Formulation** Liquid in PBS containing 50% glycerol, 0.5% BSA and 0.02% sodium azide.

### Basic Information

**Clonality** Polyclonal

### Immunogen Information

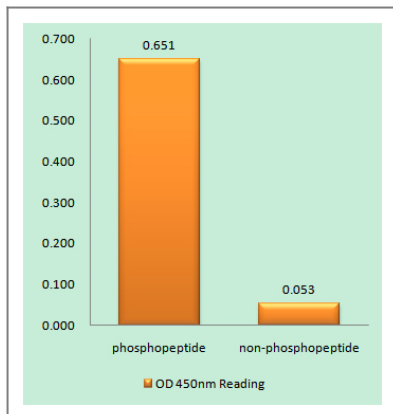
**Immunogen** The antiserum was produced against synthesized peptide derived from human c-Jun around the phosphorylation site of Thr231. AA range: 201-250

**Specificity** Phospho-AP-1 (T231) Polyclonal Antibody detects endogenous levels of AP-1 protein only when phosphorylated at T231. The name of modified sites may be influenced by many factors, such as species (the modified site was not originally found in human samples) and the change of protein sequence (the previous protein sequence is incomplete, and the protein sequence may be prolonged with the development of protein sequencing technology). When naming, we will use the "numbers" in historical reference to keep the sites consistent with the reports. The antibody binds to the following modification sequence (lowercase letters are modification sites):PQtVP

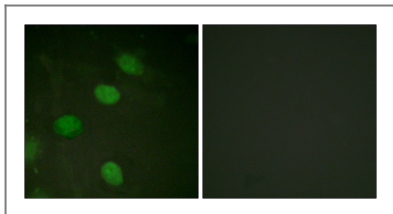
## Target Information

Gene name	JUN		
Protein Name	Transcription factor AP-1;jun;c-jun; AP-1		
	Organism	Gene ID	UniProt ID
	Human	<a href="#">3725</a> ;	<a href="#">P05412</a> ;
	Mouse	<a href="#">16476</a> ;	<a href="#">P05627</a> ;
	Rat	<a href="#">24516</a> ;	<a href="#">P17325</a> ;
Cellular localization	Nucleus.		
Tissue specificity	Expressed in the developing and adult prostate and prostate cancer cells.		
Function	Function:Transcription factor that recognizes and binds to the enhancer heptamer motif 5'-TGA[CG]TCA-3'. ,PTM:Phosphorylation enhances the transcriptional activity. Phosphorylated by PRKDC.,similarity:Belongs to the bZIP family.,similarity:Belongs to the bZIP family. Jun subfamily.,similarity:Contains 1 bZIP domain.,subunit:Heterodimer with either FOS or BATF3. Interacts with HIVEP3 (By similarity). Interacts with SMAD3/SMAD4 heterodimers. Interacts with MYBBP1A, SPIB and TCF20. Interacts with COPS5; indirectly leading to its phosphorylation. Interacts with DSIPI; this interaction inhibits the binding of active AP1 to its target DNA.,		

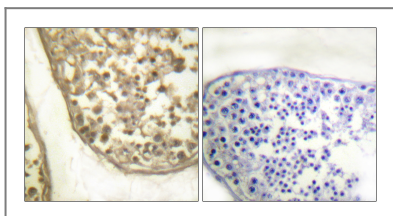
## Validation Data



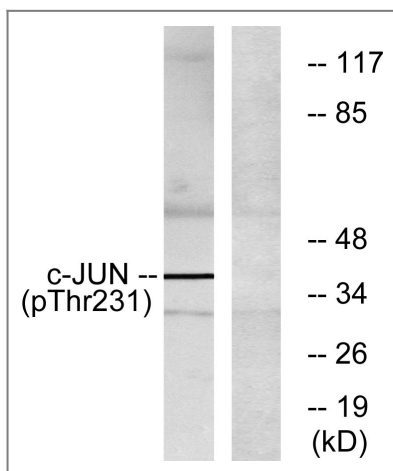
Enzyme-Linked Immunosorbent Assay (Phospho-ELISA) for Immunogen Phosphopeptide (Phospho-left) and Non-Phosphopeptide (Phospho-right), using c-Jun (Phospho-Thr231) Antibody



Immunofluorescence analysis of HeLa cells, using c-Jun (Phospho-Thr231) Antibody. The picture on the right is blocked with the phospho peptide.



Immunohistochemistry analysis of paraffin-embedded human testis, using c-Jun (Phospho-Thr231) Antibody. The picture on the right is blocked with the phospho peptide.



Western blot analysis of c-Jun (Phospho-Thr231) Antibody. The lane on the right is blocked with the c-Jun (Phospho-Thr231) peptide.

## Contact information

Orders: order.cn@immunoway.com  
 Support: support.cn@immunoway.com  
 Telephone: 400-8787-807(China)  
 Website: <http://www.immunoway.com.cn>  
 Address: 2200 Ringwood Ave San Jose, CA 95131 USA



Please scan the QR code to access additional product information:  
**AP-1 (Phospho Thr231) Rabbit pAb**

