

PC-PLD1 (Phospho Ser561) Rabbit pAb

CatalogNo: YP1136

Key Features

Host Species

- Rabbit

Reactivity

- Human, Mouse, Rat

Applications

- IHC, IF, ELISA

MW

- 124kD (Calculated)

Isotype

- IgG

Recommended Dilution Ratios

IHC 1:100-1:300

IF 1:200-1:1000

ELISA 1:10000

Not yet tested in other applications.

Storage

Storage*

-15°C to -25°C/1 year (Do not lower than -25°C)

Formulation

Liquid in PBS containing 50% glycerol, 0.5% BSA and 0.02% sodium azide.

Basic Information

Clonality

Polyclonal

Immunogen Information

Immunogen

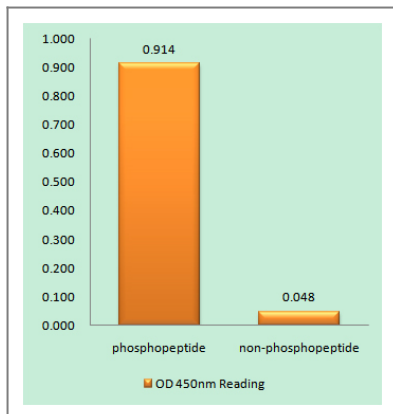
The antiserum was produced against synthesized peptide derived from human PLD1 around the phosphorylation site of Ser561. AA range: 527-576

Specificity Phospho-PC-PLD1 (S561) Polyclonal Antibody detects endogenous levels of PC-PLD1 protein only when phosphorylated at S561. The name of modified sites may be influenced by many factors, such as species (the modified site was not originally found in human samples) and the change of protein sequence (the previous protein sequence is incomplete, and the protein sequence may be prolonged with the development of protein sequencing technology). When naming, we will use the "numbers" in historical reference to keep the sites consistent with the reports. The antibody binds to the following modification sequence (lowercase letters are modification sites):KFsLY

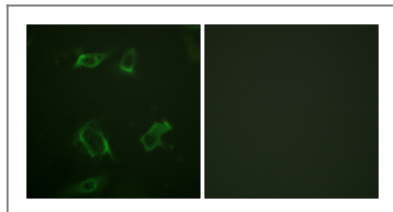
Target Information

Gene name	PLD1		
Protein Name	Phospholipase D1		
	Organism	Gene ID	UniProt ID
	Human	5337 ;	Q13393 ;
	Mouse		Q9Z280 ;
	Rat	25096 ;	P70496 ;
Cellular Localization	Cytoplasm, perinuclear region . Endoplasmic reticulum membrane ; Lipid-anchor ; Cytoplasmic side . Golgi apparatus membrane ; Lipid-anchor ; Cytoplasmic side . Late endosome membrane ; Lipid-anchor ; Cytoplasmic side .		
Tissue specificity	Expressed abundantly in the pancreas and heart and at high levels in brain, placenta, spleen, uterus and small intestine.		
Function	Catalytic activity:A phosphatidylcholine + H(2)O = choline + a phosphatidate.,enzyme regulation:Stimulated by phosphatidylinositol 4,5-bisphosphate and phosphatidylinositol 3,4,5-trisphosphate, activated by the phosphokinase C-alpha, by the ADP-ribosylation factor-1 (ARF-1), and to a lesser extent by GTP-binding proteins: RHO A, RAC-1 and CDC42. Inhibited by oleate.,Function:Implicated as a critical step in numerous cellular pathways, including signal transduction, membrane trafficking, and the regulation of mitosis. May be involved in the regulation of perinuclear intravesicular membrane traffic.,online information:Phospholipase D entry,similarity:Belongs to the phospholipase D family.,similarity:Contains 1 PH domain.,similarity:Contains 1 PX (phox homology) domain.,similarity:Contains 2 PLD phosphodiesterase domains.,subunit:Interacts with PIP5K1A.,tissue specificity:Expressed abundantly in the pancreas and heart and at high levels in brain, placenta, spleen, uterus and small intestine.,		

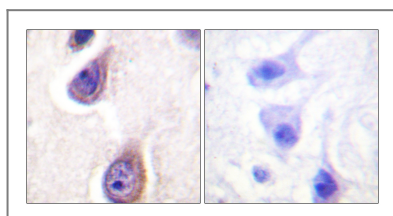
Validation Data



Enzyme-Linked Immunosorbent Assay (Phospho-ELISA) for Immunogen Phosphopeptide (Phospho-left) and Non-Phosphopeptide (Phospho-right), using PLD1 (Phospho-Ser561) Antibody



Immunofluorescence analysis of HepG2 cells, using PLD1 (Phospho-Ser561) Antibody. The picture on the right is blocked with the phospho peptide.



Immunohistochemistry analysis of paraffin-embedded human brain, using PLD1 (Phospho-Ser561) Antibody. The picture on the right is blocked with the phospho peptide.

Contact information

Orders: order.cn@immunoway.com
 Support: support.cn@immunoway.com
 Telephone: 400-8787-807(China)
 Website: <http://www.immunoway.com.cn>
 Address: 2200 Ringwood Ave San Jose, CA 95131 USA



Please scan the QR code
 to access additional
 product information:
**PC-PLD1 (Phospho
 Ser561) Rabbit pAb**

For Research Use Only. Not for Use in Diagnostic Procedures.

[Antibody](#) | [ELISA Kits](#) | [Protein](#) | [Reagents](#)