

HSP20 (Phospho Ser16) Rabbit pAb

CatalogNo: YP1130

Key Features

Host Species

- Rabbit

Reactivity

- Human, Mouse, Rat

Applications

- IHC, IF, ELISA

MW

- 17kD (Calculated)

Isotype

- IgG

Storage

Storage* -15°C to -25°C/1 year (Do not lower than -25°C)

Formulation Liquid in PBS containing 50% glycerol, 0.5% BSA and 0.02% sodium azide.

Recommended Dilution Ratios

IHC 1:100-1:300

IF 1:200-1:1000

ELISA 1:5000

Not yet tested in other applications.

Basic Information

Clonality Polyclonal

Immunogen Information

Immunogen The antiserum was produced against synthesized peptide derived from human HSP20 around the phosphorylation site of Ser16. AA range: 5-54

Specificity

Phospho-HSP20 (S16) Polyclonal Antibody detects endogenous levels of HSP20 protein only when phosphorylated at S16. The name of modified sites may be influenced by many factors, such as species (the modified site was not originally found in human samples) and the change of protein sequence (the previous protein sequence is incomplete, and the protein sequence may be prolonged with the development of protein sequencing technology). When naming, we will use the "numbers" in historical reference to keep the sites consistent with the reports. The antibody binds to the following modification sequence (lowercase letters are modification sites):RASAP

Target Information

Gene name HSPB6

Protein Name Heat shock protein beta-6

Organism	Gene ID	UniProt ID
Human	126393 ;	O14558 ;
Mouse	243912 ;	Q5EBG6 ;
Rat	192245 ;	P97541 ;

Cellular Localization

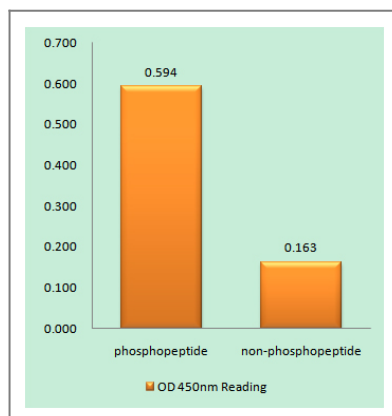
Cytoplasm . Nucleus . Secreted . Translocates to nuclear foci during heat shock. .

Tissue specificity Muscle,Skeletal muscle,Skin,

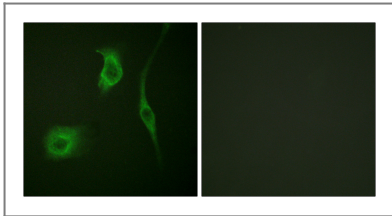
Function

PTM:The N-terminus is blocked.,similarity:Belongs to the small heat shock protein (HSP20) family.,subunit:May exist as disulfide-linked dimer and monomer.,

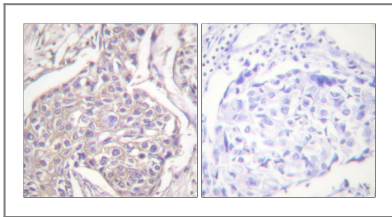
Validation Data



Enzyme-Linked Immunosorbent Assay (Phospho-ELISA) for Immunogen Phosphopeptide (Phospho-left) and Non-Phosphopeptide (Phospho-right), using HSP20 (Phospho-Ser16) Antibody



Immunofluorescence analysis of HeLa cells, using HSP20 (Phospho-Ser16) Antibody. The picture on the right is blocked with the phospho peptide.



Immunohistochemistry analysis of paraffin-embedded human breast carcinoma, using HSP20 (Phospho-Ser16) Antibody. The picture on the right is blocked with the phospho peptide.

Contact information

Orders: order.cn@immunoway.com
Support: support.cn@immunoway.com
Telephone: 400-8787-807(China)
Website: <http://www.immunoway.com.cn>
Address: 2200 Ringwood Ave San Jose, CA 95131 USA



Please scan the QR code to access additional product information:
HSP20 (Phospho Ser16) Rabbit pAb

For Research Use Only. Not for Use in Diagnostic Procedures.

[Antibody](#) | [ELISA Kits](#) | [Protein](#) | [Reagents](#)