

## CNOT2 (Phospho Ser101) Rabbit pAb

CatalogNo: YP1105

### Key Features

#### Host Species

- Rabbit

#### Reactivity

- Human, Mouse, Rat

#### Applications

- IHC, IF, ELISA

#### MW

- 60kD (Calculated)

#### Isotype

- IgG

### Storage

**Storage\*** -15°C to -25°C/1 year (Do not lower than -25°C)

**Formulation** Liquid in PBS containing 50% glycerol, 0.5% BSA and 0.02% sodium azide.

### Recommended Dilution Ratios

**IHC 1:100-1:300**

**ELISA 1:10000**

**IF 1:50-200**

### Basic Information

**Clonality** Polyclonal

### Immunogen Information

**Immunogen** The antiserum was produced against synthesized peptide derived from human CNOT2 around the phosphorylation site of Ser101. AA range:67-116

**Specificity** Phospho-CNOT2 (S101) Polyclonal Antibody detects endogenous levels of CNOT2 protein only when phosphorylated at S101. The name of modified sites may be influenced by many factors, such as species (the modified site was not originally found in human samples) and the change of protein sequence (the previous protein sequence is incomplete, and the protein sequence may be prolonged with the development of protein sequencing technology). When naming, we will use the "numbers" in historical reference to keep the sites consistent with the reports. The antibody binds to the following modification sequence (lowercase letters are modification sites):SLsQG

## Target Information

**Gene name** CNOT2

**Protein Name** CCR4-NOT transcription complex subunit 2

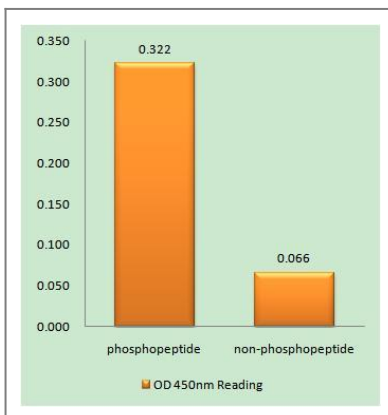
Organism	Gene ID	UniProt ID
Human	<a href="#">4848;</a>	<a href="#">Q9NZN8;</a>
Mouse	<a href="#">72068;</a>	<a href="#">Q8C5L3;</a>

**Cellular Localization** Cytoplasm . Nucleus .

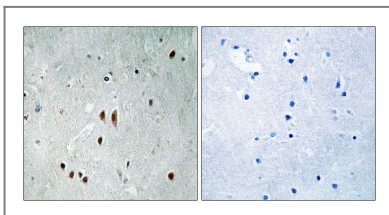
**Tissue specificity** Ubiquitous. Highly expressed in brain, heart, thymus, spleen, kidney, liver, small intestine, placenta, lung and peripheral blood leukocytes.

**Function** Function:The CCR4-NOT complex functions as general transcription regulation complex.,PTM:Phosphorylated upon DNA damage, probably by ATM or ATR.,similarity:Belongs to the CNOT2/3/5 family.,subunit:Subunit of the CCR4-NOT core complex that contains CHAF1A, CHAF1B, CNOT1, CNOT2, CNOT3, CNOT4, CNOT6 and CNOT8.,tissue specificity:Ubiquitous. Highly expressed in brain, heart, thymus, spleen, kidney, liver, small intestine, placenta, lung and peripheral blood leukocytes.,

## Validation Data



Enzyme-Linked Immunosorbent Assay (Phospho-ELISA) for Immunogen Phosphopeptide (Phospho-left) and Non-Phosphopeptide (Phospho-right), using CNOT2 (Phospho-Ser101) Antibody



Immunohistochemistry analysis of paraffin-embedded human brain, using CNOT2 (Phospho-Ser101) Antibody. The picture on the right is blocked with the phospho peptide.

## Contact information

Orders: order.cn@immunoway.com  
Support: support.cn@immunoway.com  
Telephone: 400-8787-807(China)  
Website: <http://www.immunoway.com.cn>  
Address: 2200 Ringwood Ave San Jose, CA 95131 USA



Please scan the QR code  
to access additional  
product information:  
**CNOT2 (Phospho  
Ser101) Rabbit pAb**

---

For Research Use Only. Not for Use in Diagnostic Procedures.

[Antibody](#) | [ELISA Kits](#) | [Protein](#) | [Reagents](#)