

## Claudin-5 (Phospho Tyr217) Rabbit pAb

CatalogNo: YP1089

### Key Features

#### Host Species

- Rabbit

#### Reactivity

- Human, Mouse, Rat

#### Applications

- IHC, IF, WB, ELISA

#### MW

- 23kD (Observed)

#### Isotype

- IgG

### Storage

**Storage\*** -15°C to -25°C/1 year (Do not lower than -25°C)

**Formulation** Liquid in PBS containing 50% glycerol, 0.5% BSA and 0.02% sodium azide.

### Recommended Dilution Ratios

**WB 1:500-2000**

**IHC 1:100-1:300**

**ELISA 1:5000**

**IF 1:50-200**

### Basic Information

**Clonality** Polyclonal

### Immunogen Information

**Immunogen** The antiserum was produced against synthesized peptide derived from human Claudin 5 around the phosphorylation site of Tyr217. AA range:169-218

## Specificity

Phospho-Claudin-5 (Y217) Polyclonal Antibody detects endogenous levels of Claudin-5 protein only when phosphorylated at Y217. The name of modified sites may be influenced by many factors, such as species (the modified site was not originally found in human samples) and the change of protein sequence (the previous protein sequence is incomplete, and the protein sequence may be prolonged with the development of protein sequencing technology). When naming, we will use the "numbers" in historical reference to keep the sites consistent with the reports. The antibody binds to the following modification sequence (lowercase letters are modification sites):KKNyV

## Target Information

**Gene name** CLDN5

**Protein Name** Claudin-5

Organism	Gene ID	UniProt ID
Human	<a href="#">7122</a> ;	<a href="#">O00501</a> ;
Mouse	<a href="#">12741</a> ;	<a href="#">O54942</a> ;
Rat	<a href="#">65131</a> ;	<a href="#">Q9JKD6</a> ;

### Cellular Localization

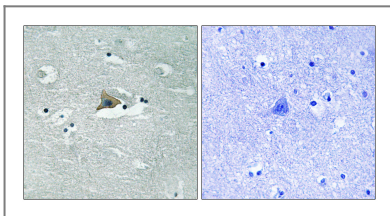
Cell junction, tight junction. Cell membrane; Multi-pass membrane protein.

**Tissue specificity** Adipose tissue,Brain,Lung,Prostate,

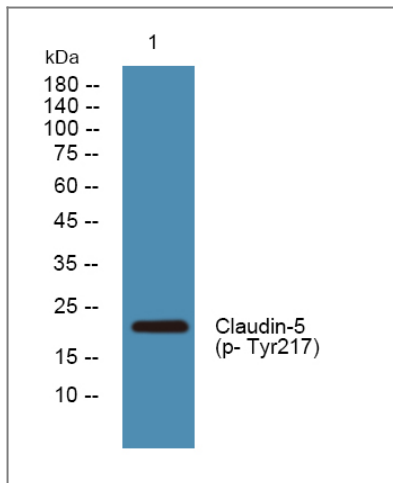
### Function

Function:Plays a major role in tight junction-specific obliteration of the intercellular space.,similarity:Belongs to the claudin family.,subunit:Directly interacts with TJP1/ZO-1, TJP2/ZO-2 and TJP3/ZO-3. Interacts with MPDZ.,

## Validation Data



Immunohistochemistry analysis of paraffin-embedded human brain, using Claudin 5 (Phospho-Tyr217) Antibody. The picture on the right is blocked with the phospho peptide.



Western blot analysis of lysates from HCT116 cells, primary antibody was diluted at 1:1000, 4°over night

## Contact information

Orders: [order.cn@immunoway.com](mailto:order.cn@immunoway.com)  
Support: [support.cn@immunoway.com](mailto:support.cn@immunoway.com)  
Telephone: 400-8787-807(China)  
Website: <http://www.immunoway.com.cn>  
Address: 2200 Ringwood Ave San Jose, CA 95131 USA



Please scan the QR code to access additional product information:  
**Claudin-5 (Phospho Tyr217) Rabbit pAb**

For Research Use Only. Not for Use in Diagnostic Procedures.

[Antibody](#) | [ELISA Kits](#) | [Protein](#) | [Reagents](#)