

## NBK (Phospho Ser35) Rabbit pAb

CatalogNo: YP1082

### Key Features

**Host Species**

- Rabbit

**Reactivity**

- Human,Rat,Mouse,

**Applications**

- IHC,IF,ELISA

**MW**

- 18kD (Calculated)

**Isotype**

- IgG

### Recommended Dilution Ratios

**IHC 1:100-1:300****ELISA 1:5000****IF 1:50-200**

### Storage

**Storage\***

-15°C to -25°C/1 year(Do not lower than -25°C)

**Formulation**

Liquid in PBS containing 50% glycerol, 0.5% BSA and 0.02% sodium azide.

### Basic Information

**Clonality**

Polyclonal

### Immunogen Information

**Immunogen**

Synthesized phospho-peptide around the phosphorylation site of human NBK (phospho Ser35)

**Specificity**

Phospho-NBK (S35) Polyclonal Antibody detects endogenous levels of NBK protein only when phosphorylated at S35. The name of modified sites may be influenced by many factors, such as species (the modified site was not originally found in human samples) and the change of protein sequence (the previous protein sequence is incomplete, and the protein sequence may be prolonged with the development of protein sequencing technology). When naming, we will use the "numbers" in historical reference to keep the sites consistent with the reports. The antibody binds to the following modification sequence (lowercase letters are modification sites): TDsEE

## | Target Information

**Gene name** BIK

**Protein Name** Bcl-2-interacting killer

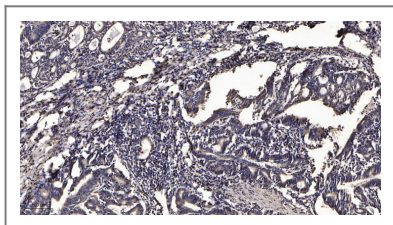
Organism	Gene ID	UniProt ID
Human	<a href="#">638;</a>	<a href="#">Q13323;</a>
Mouse		<a href="#">Q70337;</a>

**Cellular Localization** Endomembrane system; Single-pass membrane protein. Mitochondrion membrane ; Single-pass membrane protein . Around the nuclear envelope, and in cytoplasmic membranes.

**Tissue specificity** B-cell,Lymph,Lymphoid,

**Function** Domain:Intact BH3 motif is required by BIK, BID, BAK, BAD and BAX for their pro-apoptotic activity and for their interaction with anti-apoptotic members of the Bcl-2 family.,Function:Accelerates programmed cell death. Binding to the apoptosis repressors Bcl-X(L), BHRF1, Bcl-2 or its adenovirus homolog E1B 19k protein suppresses this death-promoting activity. Does not interact with BAX.,subcellular location:Around the nuclear envelope, and in cytoplasmic membranes.,

## | Validation Data



Immunohistochemical analysis of paraffin-embedded human Gastric adenocarcinoma. 1, Antibody was diluted at 1:200(4° overnight). 2, Tris-EDTA,pH9.0 was used for antigen retrieval. 3,Secondary antibody was diluted at 1:200(room temperature, 45min).

## | Contact information

Orders: order.cn@immunoway.com  
Support: support.cn@immunoway.com  
Telephone: 400-8787-807(China)  
Website: <http://www.immunoway.com.cn>  
Address: 2200 Ringwood Ave San Jose, CA 95131 USA



Please scan the QR code to access additional product information:  
**NBK (Phospho Ser35) Rabbit pAb**