

Gab 1 (Phospho Tyr307) Rabbit pAb

CatalogNo: YP1070

Key Features

Host Species

- Rabbit

Reactivity

- Human, Mouse

Applications

- IHC, IF, ELISA

MW

- 77kD (Calculated)

Isotype

- IgG

Storage

Storage* -15°C to -25°C/1 year (Do not lower than -25°C)

Formulation Liquid in PBS containing 50% glycerol, 0.5% BSA and 0.02% sodium azide.

Recommended Dilution Ratios

IHC 1:100-1:300

ELISA 1:40000

IF 1:50-200

Basic Information

Clonality Polyclonal

Immunogen Information

Immunogen Synthesized phospho-peptide around the phosphorylation site of human Gab 1 (phospho Tyr307)

Specificity Phospho-Gab 1 (Y307) Polyclonal Antibody detects endogenous levels of Gab 1 protein only when phosphorylated at Y307. The name of modified sites may be influenced by many factors, such as species (the modified site was not originally found in human samples) and the change of protein sequence (the previous protein sequence is incomplete, and the protein sequence may be prolonged with the development of protein sequencing technology). When naming, we will use the "numbers" in historical reference to keep the sites consistent with the reports. The antibody binds to the following modification sequence (lowercase letters are modification sites): ISyDI

Target Information

Gene name GAB1

Protein Name GRB2-associated-binding protein 1

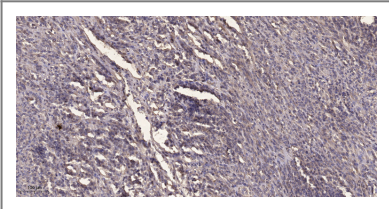
Organism	Gene ID	UniProt ID
Human	2549 ;	Q13480 ;
Mouse	14388 ;	Q9QYY0 ;

Cellular Localization cytosol,

Tissue specificity Testis,Whole embryo,

Function Function:Probably involved in EGF and insulin receptor signaling.,PTM:Phosphorylated on tyrosine residue(s) by the epidermal growth factor receptor (EGFR) and the insulin receptor (INSR). Tyrosine phosphorylation of GAB1 mediates interaction with several proteins that contain SH2 domains.,similarity:Belongs to the GAB family.,similarity:Contains 1 PH domain.,subunit:Interacts with GRB2 and with other SH2-containing proteins. Interacts with phosphorylated LAT2.,

Validation Data



Immunohistochemical analysis of paraffin-embedded human Colon cancer. 1, Antibody was diluted at 1:200(4° overnight). 2, Tris-EDTA,pH9.0 was used for antigen retrieval. 3,Secondary antibody was diluted at 1:200(room temperature, 45min).

Contact information

Orders: order.cn@immunoway.com
Support: support.cn@immunoway.com
Telephone: 400-8787-807(China)
Website: <http://www.immunoway.com.cn>
Address: 2200 Ringwood Ave San Jose, CA 95131 USA



Please scan the QR code to access additional product information:
Gab 1 (Phospho Tyr307) Rabbit pAb