

SPAK (Phospho Ser323) Rabbit pAb

CatalogNo: YP1059

Key Features

Host Species

- Rabbit

Reactivity

- Human, Mouse, Rat

Applications

- IHC, IF, ELISA

MW

- 60kD (Calculated)

Isotype

- IgG

Storage

Storage* -15°C to -25°C/1 year (Do not lower than -25°C)

Formulation Liquid in PBS containing 50% glycerol, 0.5% BSA and 0.02% sodium azide.

Recommended Dilution Ratios

IHC 1:100-1:300

ELISA 1:5000

IF 1:50-200

Basic Information

Clonality Polyclonal

Immunogen Information

Immunogen The antiserum was produced against synthesized peptide derived from human STK39 around the phosphorylation site of Ser325. AA range:291-340

Specificity Phospho-SPAK (S325) Polyclonal Antibody detects endogenous levels of SPAK protein only when phosphorylated at S325. The name of modified sites may be influenced by many factors, such as species (the modified site was not originally found in human samples) and the change of protein sequence (the previous protein sequence is incomplete, and the protein sequence may be prolonged with the development of protein sequencing technology). When naming, we will use the "numbers" in historical reference to keep the sites consistent with the reports. The antibody binds to the following modification sequence (lowercase letters are modification sites):DPsKR

Target Information

Gene name STK39

Protein Name STE20/SPS1-related proline-alanine-rich protein kinase

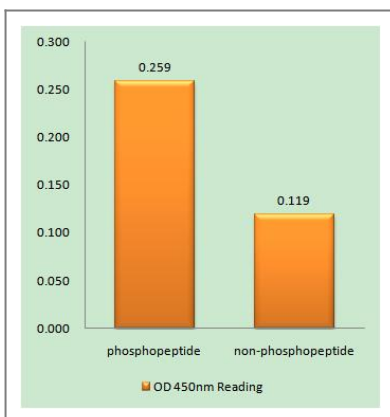
Organism	Gene ID	UniProt ID
Human	27347 ;	Q9UEW8 ;
Mouse	53416 ;	Q9Z1W9 ;
Rat	54348 ;	O88506 ;

Cellular Localization Cytoplasm . Nucleus . Nucleus when caspase-cleaved. .

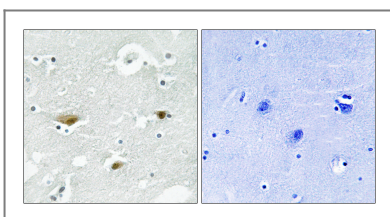
Tissue specificity Predominantly expressed in brain and pancreas followed by heart , lung , kidney , skeletal muscle , liver , placenta and testis.

Function Catalytic activity:ATP + a protein = ADP + a phosphoprotein. ,Domain:PAPA box (proline-alanine repeats) may target the kinase to a specific subcellular location by facilitating interaction with intracellular proteins such as actin or actin-like proteins. ,Function:May act as a mediator of stress-activated signals. ,similarity:Belongs to the protein kinase superfamily. STE Ser/Thr protein kinase family. STE20 subfamily. ,similarity:Contains 1 protein kinase domain. ,subcellular location:Nucleus when caspase-cleaved. ,tissue specificity:Predominantly expressed in brain and pancreas followed by heart , lung , kidney , skeletal muscle , liver , placenta and testis. ,

Validation Data



Enzyme-Linked Immunosorbent Assay (Phospho-ELISA) for Immunogen Phosphopeptide (Phospho-left) and Non-Phosphopeptide (Phospho-right), using STK39 (Phospho-Ser325) Antibody



Immunohistochemistry analysis of paraffin-embedded human brain, using STK39 (Phospho-Ser325) Antibody. The picture on the right is blocked with the phospho peptide.

| Contact information

Orders: order.cn@immunoway.com
Support: support.cn@immunoway.com
Telephone: 400-8787-807(China)
Website: <http://www.immunoway.com.cn>
Address: 2200 Ringwood Ave San Jose, CA 95131 USA



Please scan the QR code to access additional product information:
SPAK (Phospho Ser323) Rabbit pAb

For Research Use Only. Not for Use in Diagnostic Procedures.

[Antibody](#) | [ELISA Kits](#) | [Protein](#) | [Reagents](#)