

cGKII (Phospho Ser126) Rabbit pAb

CatalogNo: YP1056

Key Features

Host Species

- Rabbit

Reactivity

- Human, Mouse, Rat

Applications

- WB, IHC, IF, ELISA

MW

- 87kD (Calculated)

Isotype

- IgG

Storage

Storage* -15°C to -25°C/1 year (Do not lower than -25°C)

Formulation Liquid in PBS containing 50% glycerol, 0.5% BSA and 0.02% sodium azide.

Recommended Dilution Ratios

IHC 1:100-1:300

WB 1:1000-1:5000

ELISA 1:5000

IF 1:50-200

Basic Information

Clonality Polyclonal

Immunogen Information

Immunogen The antiserum was produced against synthesized peptide derived from human PKG2 around the phosphorylation site of Ser126. AA range:92-141

Specificity

Phospho-cGKII (S126) Polyclonal Antibody detects endogenous levels of cGKII protein only when phosphorylated at S126. The name of modified sites may be influenced by many factors, such as species (the modified site was not originally found in human samples) and the change of protein sequence (the previous protein sequence is incomplete, and the protein sequence may be prolonged with the development of protein sequencing technology). When naming, we will use the "numbers" in historical reference to keep the sites consistent with the reports. The antibody binds to the following modification sequence (lowercase letters are modification sites):GVsAE

Target Information

Gene name PRKG2

Protein Name cGMP-dependent protein kinase 2

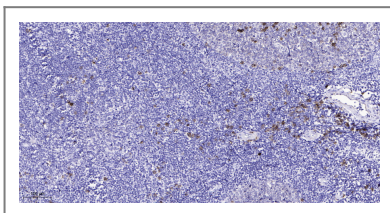
Organism	Gene ID	UniProt ID
Human	5593 ;	Q13237 ;
Mouse		Q61410 ;
Rat	25523 ;	Q64595 ;

Cellular Localization Apical cell membrane ; Lipid-anchor .

Tissue specificity Highly concentrated in brain, lung and intestinal mucosa.

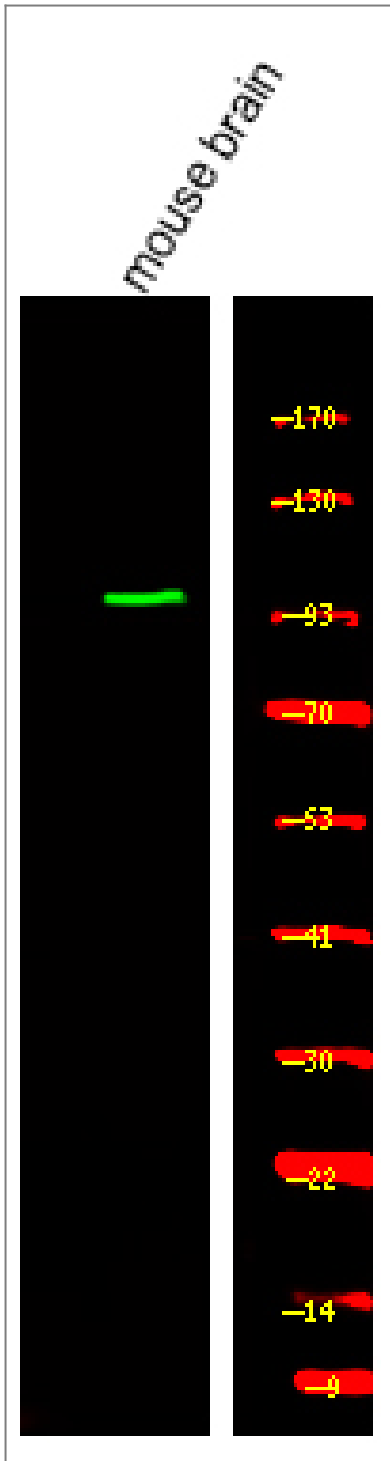
Function Catalytic activity:ATP + a protein = ADP + a phosphoprotein.,enzyme regulation:Binding of cGMP results in enzyme activation.,similarity:Belongs to the protein kinase superfamily. AGC Ser/Thr protein kinase family. cGMP subfamily.,similarity:Contains 1 AGC-kinase C-terminal domain.,similarity:Contains 1 protein kinase domain.,similarity:Contains 2 cyclic nucleotide-binding domains.,tissue specificity:Highly concentrated in brain, lung and intestinal mucosa.,

Validation Data



Immunohistochemical analysis of paraffin-embedded human tonsil. 1, Antibody was diluted at 1:200(4° overnight). 2, Tris-EDTA,pH9.0 was used for antigen retrieval. 3,Secondary antibody was diluted at 1:200(room temperature, 45min).

Western Blot analysis of various,using primary antibody at 1:1000 dilution.
Secondary antibody(catalog#:RS23920) was diluted at 1:10000



Contact information

Orders: order.cn@immunoway.com
Support: support.cn@immunoway.com
Telephone: 400-8787-807(China)
Website: <http://www.immunoway.com.cn>
Address: 2200 Ringwood Ave San Jose, CA 95131 USA



Please scan the QR code
to access additional
product information:
**cGKII (Phospho
Ser126) Rabbit pAb**

