

MLK1/2 (Phospho Thr312/266) Rabbit pAb

CatalogNo: YP1050

Key Features

Host Species

- Rabbit

Reactivity

- Human, Mouse

Applications

- IHC, IF, ELISA

MW

- 100-120kD (Calculated)

Isotype

- IgG

Storage

Storage* -15°C to -25°C/1 year (Do not lower than -25°C)

Formulation Liquid in PBS containing 50% glycerol, 0.5% BSA and 0.02% sodium azide.

Recommended Dilution Ratios

IHC 1:100-1:300

ELISA 1:5000

IF 1:50-200

Basic Information

Clonality Polyclonal

Immunogen Information

Immunogen The antiserum was produced against synthesized peptide derived from human MLK1/2 around the phosphorylation site of Thr312/266. AA range:281-330

Specificity This antibody detects endogenous levels of MLK1/2 only when phosphorylated at Human:T312/266, Mouse:T305/266..The name of modified sites may be influenced by many factors, such as species (the modified site was not originally found in human samples) and the change of protein sequence (the previous protein sequence is incomplete, and the protein sequence may be prolonged with the development of protein sequencing technology). When naming, we will use the "numbers" in historical reference to keep the sites consistent with the reports. The antibody binds to the following modification sequence (lowercase letters are modification sites):AGtYA

Target Information

Gene name MAP3K9/MAP3K10

Protein Name Mitogen-activated protein kinase kinase kinase 9/10

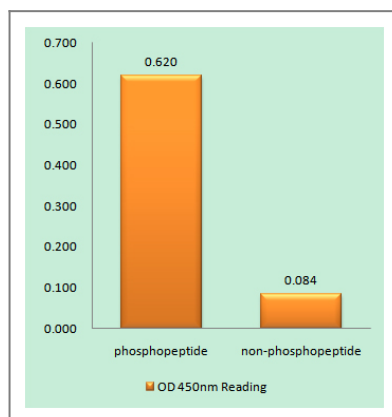
Organism	Gene ID	UniProt ID
Human	4293 ; 4294 ;	P80192 ; Q02779 ;
Mouse	338372 ;	

Cellular Localization intracellular ,integral component of membrane ,

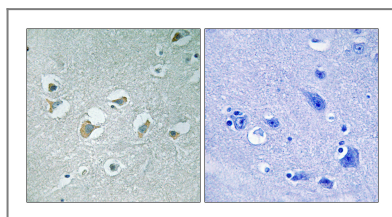
Tissue specificity Expressed in epithelial tumor cell lines of colonic , breast and esophageal origin.

Function Catalytic activity:ATP + a protein = ADP + a phosphoprotein. ,cofactor:Magnesium. ,enzyme regulation:Homodimerization via the leucine zipper domains is required for autophosphorylation and subsequent activation. ,Function:Activates the JUN N-terminal pathway. ,PTM:Autophosphorylation on serine and threonine residues within the activation loop plays a role in enzyme activation. Thr-312 is likely to be the main autophosphorylation site. ,similarity:Belongs to the protein kinase superfamily. STE Ser/Thr protein kinase family. MAP kinase kinase kinase subfamily. ,similarity:Contains 1 protein kinase domain. ,similarity:Contains 1 SH3 domain. ,subunit:Homodimer. ,tissue specificity:Expressed in epithelial tumor cell lines of colonic , breast and esophageal origin. ,

Validation Data



Enzyme-Linked Immunosorbent Assay (Phospho-ELISA) for Immunogen Phosphopeptide (Phospho-left) and Non-Phosphopeptide (Phospho-right), using MLK1/2 (Phospho-Thr312/266) Antibody



Immunohistochemistry analysis of paraffin-embedded human brain, using MLK1/2 (Phospho-Thr312/266) Antibody. The picture on the right is blocked with the phospho peptide.

Contact information

Orders: order.cn@immunoway.com
Support: support.cn@immunoway.com
Telephone: 400-8787-807(China)
Website: <http://www.immunoway.com.cn>
Address: 2200 Ringwood Ave San Jose, CA 95131 USA



Please scan the QR code to access additional product information:
MLK1/2 (Phospho Thr312/266) Rabbit pAb

For Research Use Only. Not for Use in Diagnostic Procedures.

[Antibody](#) | [ELISA Kits](#) | [Protein](#) | [Reagents](#)