

## GCN2 (Phospho Thr899) Rabbit pAb

CatalogNo: YP1042

### Key Features

#### Host Species

- Rabbit

#### Reactivity

- Human, Mouse

#### Applications

- IHC, IF, ELISA

#### MW

- 187kD (Calculated)

#### Isotype

- IgG

### Recommended Dilution Ratios

IHC 1:100-1:300

ELISA 1:5000

IF 1:50-200

### Storage

#### Storage\*

-15°C to -25°C/1 year (Do not lower than -25°C)

#### Formulation

Liquid in PBS containing 50% glycerol, 0.5% BSA and 0.02% sodium azide.

### Basic Information

#### Clonality

Polyclonal

### Immunogen Information

#### Immunogen

The antiserum was produced against synthesized peptide derived from human GCN2 around the phosphorylation site of Thr899. AA range: 865-914

#### Specificity

Phospho-GCN2 (T899) Polyclonal Antibody detects endogenous levels of GCN2 protein only when phosphorylated at T899. The name of modified sites may be influenced by many factors, such as species (the modified site was not originally found in human samples) and the change of protein sequence (the previous protein sequence is incomplete, and the protein sequence may be prolonged with the development of protein sequencing technology). When naming, we will use the "numbers" in historical reference to keep the sites consistent with the reports. The antibody binds to the following modification sequence (lowercase letters are modification sites): HLTGM

## | Target Information

**Gene name** EIF2AK4

**Protein Name** Eukaryotic translation initiation factor 2-alpha kinase 4

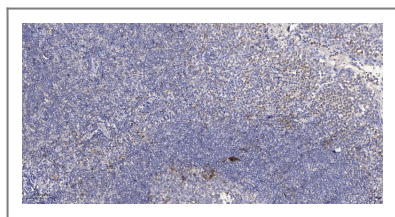
Organism	Gene ID	UniProt ID
Human	<a href="#">440275</a> ;	<a href="#">Q9P2K8</a> ;
Mouse	<a href="#">27103</a> ;	<a href="#">Q9QZ05</a> ;

**Cellular Localization** Cytoplasm .

**Tissue specificity** Widely expressed (PubMed:10504407). Expressed in lung, smooth muscle cells and macrophages (PubMed:24292273).

**Function** Catalytic activity:ATP + a protein = ADP + a phosphoprotein.,Domain:Kinase domain 1 is a degenerate kinase domain.,Domain:RWD domain is reported to interact with GCN1L1.,Function:Can phosphorylate the alpha subunit of EIF2 and may mediate translational control.,PTM:Autophosphorylated on threonine residues.,similarity:Belongs to the protein kinase superfamily. Ser/Thr protein kinase family. GCN2 subfamily.,similarity:Contains 1 RWD domain.,similarity:Contains 2 protein kinase domains.,tissue specificity:Widely expressed.,

## | Validation Data



Immunohistochemical analysis of paraffin-embedded human tonsil. 1, Antibody was diluted at 1:200(4° overnight). 2, Tris-EDTA,pH9.0 was used for antigen retrieval. 3,Secondary antibody was diluted at 1:200(room temperature, 30min).

## | Contact information

Orders: order.cn@immunoway.com  
Support: support.cn@immunoway.com  
Telephone: 400-8787-807(China)  
Website: <http://www.immunoway.com.cn>  
Address: 2200 Ringwood Ave San Jose, CA 95131 USA



Please scan the QR code to access additional product information:  
**GCN2 (Phospho Thr899) Rabbit pAb**