

EphA3/4/5 (Phospho Tyr779/833) Rabbit pAb

CatalogNo: YP1041

Key Features

Host Species

- Rabbit

Reactivity

- Human, Mouse, Rat

Applications

- IHC, IF, ELISA

MW

- 110kD (Observed)

Isotype

- IgG

Storage

Storage* -15°C to -25°C/1 year (Do not lower than -25°C)

Formulation Liquid in PBS containing 50% glycerol, 0.5% BSA and 0.02% sodium azide.

Recommended Dilution Ratios

IHC 1:100-1:300

ELISA 1:10000

IF 1:50-200

Basic Information

Clonality Polyclonal

Immunogen Information

Immunogen The antiserum was produced against synthesized peptide derived from human EPHA3/4/5 around the phosphorylation site of Tyr779/833. AA range: 746-795

Specificity

This antibody detects endogenous levels of EphA3/4/5 only when phosphorylated at Human:Y779/779/833, Mouse:Y779/779/672, Rat:Y780/-/835. The name of modified sites may be influenced by many factors, such as species (the modified site was not originally found in human samples) and the change of protein sequence (the previous protein sequence is incomplete, and the protein sequence may be prolonged with the development of protein sequencing technology). When naming, we will use the "numbers" in historical reference to keep the sites consistent with the reports. The antibody binds to the following modification sequence (lowercase letters are modification sites):AAyTT

Target Information

Gene name EPHA3/EPHA4/EPHA5

Protein Name Ephrin type-A receptor 3/4/5

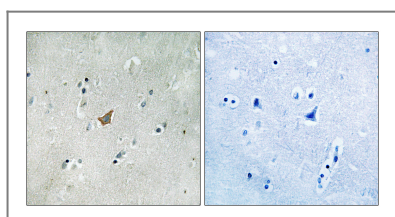
Organism	Gene ID	UniProt ID
Human	2042 ; 2043 ;	P29320 ; P54764 ; P54756 ;
Mouse	13838 ; 13839 ;	
Rat	29210 ; 79208 ;	O08680 ; P54757 ;

Cellular Localization [Isoform 1]: Cell membrane ; Single-pass type I membrane protein .; [Isoform 2]: Secreted .

Tissue specificity Widely expressed. Highest level in placenta.

Function Catalytic activity:ATP + a [protein]-L-tyrosine = ADP + a [protein]-L-tyrosine phosphate.,Disease:Defects in EPHA3 may be a cause of colorectal cancer (CRC) [MIM:114500].,Function:Receptor for members of the ephrin-A family. Binds to ephrin-A2, -A3, -A4 and -A5. Could play a role in lymphoid function.,similarity:Belongs to the protein kinase superfamily. Tyr protein kinase family.,similarity:Belongs to the protein kinase superfamily. Tyr protein kinase family. Ephrin receptor subfamily.,similarity:Contains 1 protein kinase domain.,similarity:Contains 1 SAM (sterile alpha motif) domain.,similarity:Contains 2 fibronectin type-III domains.,tissue specificity:Widely expressed. Highest level in placenta.,

Validation Data



Immunohistochemistry analysis of paraffin-embedded human brain, using EPHA3/4/5 (Phospho-Tyr779/833) Antibody. The picture on the right is blocked with the phospho peptide.

Contact information

Orders: order.cn@immunoway.com
Support: support.cn@immunoway.com
Telephone: 400-8787-807(China)
Website: <http://www.immunoway.com.cn>
Address: 2200 Ringwood Ave San Jose, CA 95131 USA



Please scan the QR code to access additional product information:
EphA3/4/5 (Phospho Tyr779/833) Rabbit pAb

For Research Use Only. Not for Use in Diagnostic Procedures.

[Antibody](#) | [ELISA Kits](#) | [Protein](#) | [Reagents](#)