

Casein Kinase I γ 1/2/3 (Phospho Tyr263) Rabbit pAb

CatalogNo: YP1040

Key Features

Host Species

- Rabbit

Reactivity

- Human, Mouse, Rat

Applications

- IHC, IF, ELISA

MW

- 50kD (Calculated)

Isotype

- IgG

Storage

Storage* -15°C to -25°C/1 year (Do not lower than -25°C)

Formulation Liquid in PBS containing 50% glycerol, 0.5% BSA and 0.02% sodium azide.

Recommended Dilution Ratios

IHC 1:100-1:300

ELISA 1:20000

IF 1:50-200

Basic Information

Clonality Polyclonal

Immunogen Information

Immunogen The antiserum was produced against synthesized peptide derived from human CK-1 gamma1/2/3 around the phosphorylation site of Tyr263. AA range: 229-278

Specificity

Phospho-Casein Kinase I γ 1/2/3 (Y263) Polyclonal Antibody detects endogenous levels of Casein Kinase I γ 1/2/3 protein only when phosphorylated at Y263. The name of modified sites may be influenced by many factors, such as species (the modified site was not originally found in human samples) and the change of protein sequence (the previous protein sequence is incomplete, and the protein sequence may be prolonged with the development of protein sequencing technology). When naming, we will use the "numbers" in historical reference to keep the sites consistent with the reports. The antibody binds to the following modification sequence (lowercase letters are modification sites):ERYQK

Target Information

Gene name CSNK1G1/CSNK1G2/CSNK1G3

Protein Name Casein kinase I isoform gamma-1/2/3

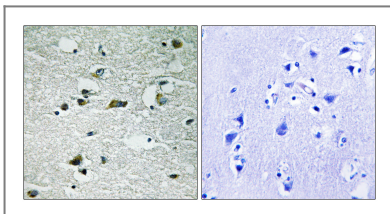
Organism	Gene ID	UniProt ID
Human	53944 ; 1455 ; 1456 ;	Q9HCP0 ; P78368 ; Q9Y6M4 ;
Mouse	214897 ; 103236 ; 70425 ;	
Rat	64086 ; 65278 ; 64823 ;	Q62761 ; Q62762 ; Q62763 ;

Cellular Localization Cytoplasm.

Tissue specificity Brain, Muscle, Pooled,

Function Catalytic activity:ATP + a protein = ADP + a phosphoprotein.,Function:Casein kinases are operationally defined by their preferential utilization of acidic proteins such as caseins as substrates. It can phosphorylate a large number of proteins. Participates in Wnt signaling.,PTM:Autophosphorylated.,similarity:Belongs to the protein kinase superfamily.,similarity:Belongs to the protein kinase superfamily. CK1 Ser/Thr protein kinase family. Casein kinase I subfamily.,similarity:Contains 1 protein kinase domain.,subunit:Monomer.,

Validation Data



Immunohistochemistry analysis of paraffin-embedded human brain, using CK-1 gamma1/2/3 (Phospho-Tyr263) Antibody. The picture on the right is blocked with the phospho peptide.

| Contact information

Orders: order.cn@immunoway.com
Support: support.cn@immunoway.com
Telephone: 400-8787-807(China)
Website: <http://www.immunoway.com.cn>
Address: 2200 Ringwood Ave San Jose, CA 95131 USA



Please scan the QR code to access additional product information:

**Casein Kinase
I γ 1/2/3 (Phospho
Tyr263) Rabbit pAb**

For Research Use Only. Not for Use in Diagnostic Procedures.

[Antibody](#) | [ELISA Kits](#) | [Protein](#) | [Reagents](#)