

Blk (Phospho Tyr501) Rabbit pAb

CatalogNo: YP1038

Key Features

Host Species

- Rabbit

Reactivity

- Human, Mouse, Rat

Applications

- IHC, IF, ELISA

MW

- 58kD (Calculated)

Isotype

- IgG

Storage

Storage* -15°C to -25°C/1 year (Do not lower than -25°C)

Formulation Liquid in PBS containing 50% glycerol, 0.5% BSA and 0.02% sodium azide.

Recommended Dilution Ratios

IHC 1:100-1:300

ELISA 1:20000

IF 1:50-200

Basic Information

Clonality Polyclonal

Immunogen Information

Immunogen The antiserum was produced against synthesized peptide derived from human BLK around the phosphorylation site of Tyr501. AA range:456-505

Specificity Phospho-Blk (Y501) Polyclonal Antibody detects endogenous levels of Blk protein only when phosphorylated at Y501. The name of modified sites may be influenced by many factors, such as species (the modified site was not originally found in human samples) and the change of protein sequence (the previous protein sequence is incomplete, and the protein sequence may be prolonged with the development of protein sequencing technology). When naming, we will use the "numbers" in historical reference to keep the sites consistent with the reports. The antibody binds to the following modification sequence (lowercase letters are modification sites):RQyEL

Target Information

Gene name BLK

Protein Name Tyrosine-protein kinase Blk

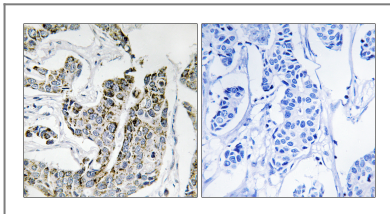
Organism	Gene ID	UniProt ID
Human	640 ;	P51451 ;
Mouse	12143 ;	P16277 ;

Cellular Localization Cell membrane ; Lipid-anchor . Present and active in lipid rafts. Membrane location is required for the phosphorylation of CD79A and CD79B (By similarity). .

Tissue specificity Expressed in lymphatic organs, pancreatic islets, Leydig cells, striate ducts of salivary glands and hair follicles.

Function Catalytic activity:ATP + a [protein]-L-tyrosine = ADP + a [protein]-L-tyrosine phosphate.,Function:May function in a signal transduction pathway that is restricted to B-lymphoid cells.,similarity:Belongs to the protein kinase superfamily. Tyr protein kinase family. SRC subfamily.,similarity:Contains 1 protein kinase domain.,similarity:Contains 1 SH2 domain.,similarity:Contains 1 SH3 domain.,

Validation Data



Immunohistochemistry analysis of paraffin-embedded human breast carcinoma, using BLK (Phospho-Tyr501) Antibody. The picture on the right is blocked with the phospho peptide.

Contact information

Orders: order.cn@immunoway.com
Support: support.cn@immunoway.com
Telephone: 400-8787-807(China)
Website: <http://www.immunoway.com.cn>
Address: 2200 Ringwood Ave San Jose, CA 95131 USA



Please scan the QR code to access additional product information:
Blk (Phospho Tyr501) Rabbit pAb