

## Presenilin 2 (Phospho Ser330) Rabbit pAb

CatalogNo: YP1024

### Key Features

#### Host Species

- Rabbit

#### Reactivity

- Human, Mouse, Rat

#### Applications

- WB, IHC, IF, ELISA

#### MW

- 50kD (Observed)

#### Isotype

- IgG

### Storage

**Storage\*** -15°C to -25°C/1 year (Do not lower than -25°C)

**Formulation** Liquid in PBS containing 50% glycerol, 0.5% BSA and 0.02% sodium azide.

### Recommended Dilution Ratios

**WB 1:500-1:2000**

**IHC 1:100-1:300**

**ELISA 1:5000**

**IF 1:50-200**

### Basic Information

**Clonality** Polyclonal

### Immunogen Information

**Immunogen** The antiserum was produced against synthesized peptide derived from human Presenilin 2 around the phosphorylation site of Ser330. AA range:296-345

**Specificity**

Phospho-Presenilin 2 (S330) Polyclonal Antibody detects endogenous levels of Presenilin 2 protein only when phosphorylated at S330. The name of modified sites may be influenced by many factors, such as species (the modified site was not originally found in human samples) and the change of protein sequence (the previous protein sequence is incomplete, and the protein sequence may be prolonged with the development of protein sequencing technology). When naming, we will use the "numbers" in historical reference to keep the sites consistent with the reports. The antibody binds to the following modification sequence (lowercase letters are modification sites):YDsFG

---

## | Target Information

**Gene name** PSEN2 AD4 PS2 PSNL2 STM2

**Protein Name** Presenilin-2

| Organism | Gene ID                | UniProt ID              |
|----------|------------------------|-------------------------|
| Human    | <a href="#">5664;</a>  | <a href="#">P49810;</a> |
| Mouse    | <a href="#">19165;</a> | <a href="#">Q61144;</a> |
| Rat      | <a href="#">81751;</a> | <a href="#">O88777;</a> |

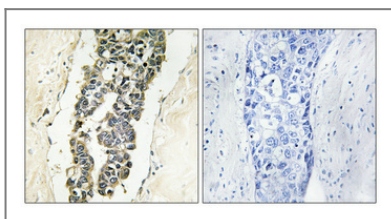
**Cellular Localization** Endoplasmic reticulum membrane ; Multi-pass membrane protein . Golgi apparatus membrane ; Multi-pass membrane protein .

**Tissue specificity** Isoform 1 is seen in the placenta, skeletal muscle and heart while isoform 2 is seen in the heart, brain, placenta, liver, skeletal muscle and kidney.

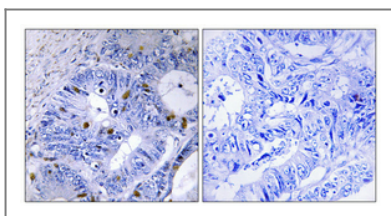
## Function

Disease: Defects in PSEN2 are the cause of Alzheimer disease type 4 (AD4) [MIM:606889]. AD is an autosomal dominant Alzheimer disease. Alzheimer disease is a neurodegenerative disorder characterized by progressive dementia, loss of cognitive abilities, and deposition of fibrillar amyloid proteins as intraneuronal neurofibrillary tangles, extracellular amyloid plaques and vascular amyloid deposits. The major constituent of these plaques is the neurotoxic amyloid-beta-APP 40-42 peptide (s), derived proteolytically from the transmembrane precursor protein APP by sequential secretase processing. The cytotoxic C-terminal fragments (CTFs) and the caspase-cleaved products such as C31 derived from APP, are also implicated in neuronal death. Disease: Three causative genes have been identified that when mutated lead to presenile Alzheimer Disease: APP (amyloid precursor protein gene), PSEN1 and PSEN2. These three genes account for half of the families with autosomal dominant presenile AD, which represent approximately 10% of the whole AD population. In addition, apolipoprotein E has been identified as a risk-modifying locus. Domain: The PAL motif is required for normal active site conformation. Function: Probable catalytic subunit of the gamma-secretase complex, an endoprotease complex that catalyzes the intramembrane cleavage of integral membrane proteins such as Notch receptors and APP (beta-amyloid precursor protein). Requires the other members of the gamma-secretase complex to have a protease activity. May play a role in intracellular signaling and gene expression or in linking chromatin to the nuclear membrane. May function in the cytoplasmic partitioning of proteins. online information: Presenilins mutations, PTM: Heterogeneous proteolytic processing generates N-terminal and C-terminal fragments. PTM: Phosphorylated on serine residues. similarity: Belongs to the peptidase A22A family. subunit: Interacts with DOCK3 (By similarity). Homodimer. Component of the gamma-secretase complex, a complex composed of a presenilin homodimer (PSEN1 or PSEN2), nicastrin (NCSTN), APH1 (APH1A or APH1B) and PEN2. Such minimal complex is sufficient for secretase activity, although other components may exist. Interacts with HERPUD1, FLNA, FLNB and PARL. tissue specificity: Isoform 1 is seen in the placenta, skeletal muscle and heart while isoform 2 is seen in the heart, brain, placenta, liver, skeletal muscle and kidney.

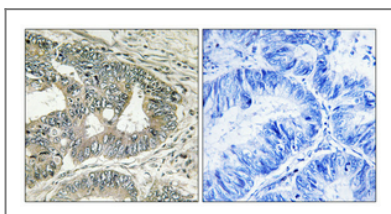
## Validation Data



Immunohistochemical analysis of paraffin-embedded Human breast cancer. Antibody was diluted at 1:100 (4° overnight). High-pressure and temperature Tris-EDTA, pH 8.0 was used for antigen retrieval. Negative control (right) obtained from antibody was pre-absorbed by immunogen peptide.



Immunohistochemical analysis of paraffin-embedded Human colon cancer. Antibody was diluted at 1:100 (4° overnight). High-pressure and temperature Tris-EDTA, pH 8.0 was used for antigen retrieval. Negative control (right) obtained from antibody was pre-absorbed by immunogen peptide.



Immunohistochemical analysis of paraffin-embedded Human colon cancer. Antibody was diluted at 1:100 (4° overnight). High-pressure and temperature Tris-EDTA, pH 8.0 was used for antigen retrieval. Negative control (right) obtained from antibody was pre-absorbed by immunogen peptide.

## | Contact information

Orders: order.cn@immunoway.com  
Support: support.cn@immunoway.com  
Telephone: 400-8787-807(China)  
Website: <http://www.immunoway.com.cn>  
Address: 2200 Ringwood Ave San Jose, CA 95131 USA



Please scan the QR code to access additional product information:

**Presenilin 2  
(Phospho Ser330)  
Rabbit pAb**

---

For Research Use Only. Not for Use in Diagnostic Procedures.

[Antibody](#) | [ELISA Kits](#) | [Protein](#) | [Reagents](#)