

Nur77 (Phospho Ser351) Rabbit pAb

CatalogNo: YP1019

Key Features

Host Species

- Rabbit

Reactivity

- Human, Mouse, Rat

Applications

- WB, IHC, IF, ELISA

MW

- 65-70kD (Observed)

Isotype

- IgG

Storage

Storage* -15°C to -25°C/1 year (Do not lower than -25°C)

Formulation Liquid in PBS containing 50% glycerol, 0.5% BSA and 0.02% sodium azide.

Recommended Dilution Ratios

WB 1:500-2000

IHC 1:100-1:300

ELISA 1:40000

IF 1:50-200

Basic Information

Clonality Polyclonal

Immunogen Information

Immunogen The antiserum was produced against synthesized peptide derived from human Nuclear Receptor NR4A1 around the phosphorylation site of Ser351. AA range:317-366

Specificity

Phospho-Nur77 (S351) Polyclonal Antibody detects endogenous levels of Nur77 protein only when phosphorylated at S351. The name of modified sites may be influenced by many factors, such as species (the modified site was not originally found in human samples) and the change of protein sequence (the previous protein sequence is incomplete, and the protein sequence may be prolonged with the development of protein sequencing technology). When naming, we will use the "numbers" in historical reference to keep the sites consistent with the reports. The antibody binds to the following modification sequence (lowercase letters are modification sites):LPsKP

| Target Information

Gene name NR4A1

Protein Name Nuclear receptor subfamily 4 group A member 1

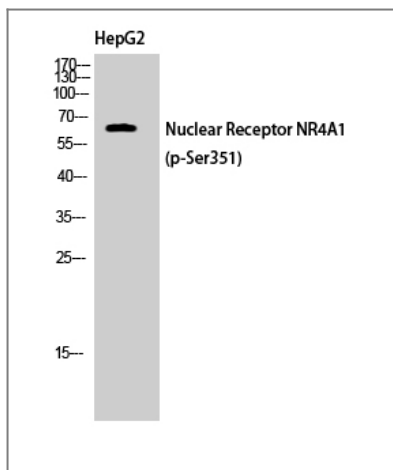
Organism	Gene ID	UniProt ID
Human	3164 ;	P22736 ;
Mouse	15370 ;	P12813 ;
Rat	79240 ;	P22829 ;

Cellular Localization Nucleus . Cytoplasm . Mitochondrion . Nuclear export to the cytoplasm is XPO1-mediated and positively regulated by IFI27 (PubMed:22427340). Translocation to the mitochondrion upon interaction with RXRA and upon the presence of 9-cis retinoic acid (PubMed:17761950). .

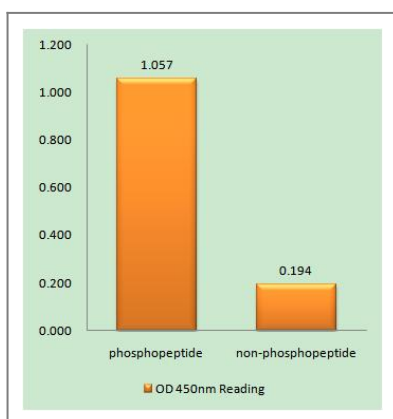
Tissue specificity Fetal muscle and adult liver, brain and thyroid.

Function Function:Orphan nuclear receptor.,induction:By growth-stimulating agents.,similarity:Belongs to the nuclear hormone receptor family.,similarity:Belongs to the nuclear hormone receptor family. NR4 subfamily.,similarity:Contains 1 nuclear receptor DNA-binding domain.,subunit:Interacts with GADD45GIP1.,tissue specificity:Fetal muscle and adult liver, brain and thyroid.,

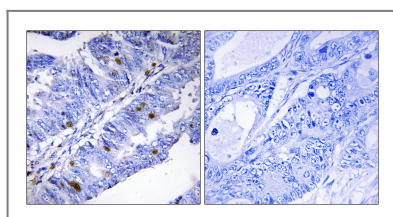
| Validation Data



Western Blot analysis of HepG2 cells using Phospho-Nur77 (S351) Polyclonal Antibody cells nucleus extracted by Minute TM Cytoplasmic and Nuclear Fractionation kit (SC-003, Invent biotech, MN, USA).



Enzyme-Linked Immunosorbent Assay (Phospho-ELISA) for Immunogen Phosphopeptide (Phospho-left) and Non-Phosphopeptide (Phospho-right), using Nuclear Receptor NR4A1 (Phospho-Ser351) Antibody



Immunohistochemistry analysis of paraffin-embedded human colon carcinoma, using Nuclear Receptor NR4A1 (Phospho-Ser351) Antibody. The picture on the right is blocked with the phospho peptide.

Contact information

Orders: order.cn@immunoway.com
 Support: support.cn@immunoway.com
 Telephone: 400-8787-807(China)
 Website: <http://www.immunoway.com.cn>
 Address: 2200 Ringwood Ave San Jose, CA 95131 USA



Please scan the QR code to access additional product information:
Nur77 (Phospho Ser351) Rabbit pAb

For Research Use Only. Not for Use in Diagnostic Procedures.

[Antibody](#) | [ELISA Kits](#) | [Protein](#) | [Reagents](#)