

HMG-17 (Phospho Ser29) Rabbit pAb

CatalogNo: YP0999

Key Features

Host Species

- Rabbit

Reactivity

- Human, Mouse, Rat

Applications

- IHC, IF, ELISA

MW

- 10kD (Calculated)
15-17kD (Observed)

Isotype

- IgG

Storage

Storage* -15°C to -25°C/1 year (Do not lower than -25°C)

Formulation Liquid in PBS containing 50% glycerol, 0.5% BSA and 0.02% sodium azide.

Recommended Dilution Ratios

IHC 1:100-1:300

ELISA 1:5000

IF 1:50-200

Basic Information

Clonality Polyclonal

Immunogen Information

Immunogen The antiserum was produced against synthesized peptide derived from human HMG17 around the phosphorylation site of Ser29. AA range: 1-50

Specificity

Phospho-HMG-17 (S29) Polyclonal Antibody detects endogenous levels of HMG-17 protein only when phosphorylated at S29. The name of modified sites may be influenced by many factors, such as species (the modified site was not originally found in human samples) and the change of protein sequence (the previous protein sequence is incomplete, and the protein sequence may be prolonged with the development of protein sequencing technology). When naming, we will use the "numbers" in historical reference to keep the sites consistent with the reports. The antibody binds to the following modification sequence (lowercase letters are modification sites):RLsAK

Target Information

Gene name HMGN2

Protein Name Non-histone chromosomal protein HMG-17

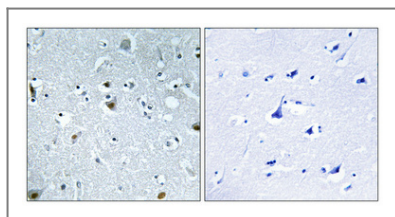
Organism	Gene ID	UniProt ID
Human	3151 ;	P05204 ;
Mouse	15331 ;	P09602 ;
Rat		P18437 ;

Cellular Localization Nucleus . Cytoplasm . Cytoplasmic enrichment upon phosphorylation.

Tissue specificity Brain,Colon,Eye,Lung,Lymph,Mammary gland,Muscle,Peripheral

Function Function: Binds to the inner side of the nucleosomal DNA thus altering the interaction between the DNA and the histone octamer. May be involved in the process which maintains transcribable genes in a unique chromatin conformation., mass spectrometry: PubMed:10739259, PTM: Phosphorylation favors cytoplasmic localization., similarity: Belongs to the HMGN family., subcellular location: Cytoplasmic enrichment upon phosphorylation.,

Validation Data



Immunohistochemical analysis of paraffin-embedded Human brain. Antibody was diluted at 1:100 (4° overnight). High-pressure and temperature Tris-EDTA, pH 8.0 was used for antigen retrieval. Negative control (right) obtained from antibody was pre-absorbed by immunogen peptide.

Contact information

Orders: order.cn@immunoway.com
Support: support.cn@immunoway.com
Telephone: 400-8787-807(China)
Website: <http://www.immunoway.com.cn>
Address: 2200 Ringwood Ave San Jose, CA 95131 USA



Please scan the QR code
to access additional
product information:
**HMG-17 (Phospho
Ser29) Rabbit pAb**

For Research Use Only. Not for Use in Diagnostic Procedures.

[Antibody](#) | [ELISA Kits](#) | [Protein](#) | [Reagents](#)