

## p107 (Phospho Thr369) Rabbit pAb

CatalogNo: YP0980

### Key Features

#### Host Species

- Rabbit

#### Reactivity

- Human, Mouse

#### Applications

- WB, IHC, IF, ELISA

#### MW

- 121kD (Calculated)

#### Isotype

- IgG

### Storage

**Storage\*** -15°C to -25°C/1 year (Do not lower than -25°C)

**Formulation** Liquid in PBS containing 50% glycerol, 0.5% BSA and 0.02% sodium azide.

### Recommended Dilution Ratios

**WB 1:500-2000**

**IHC 1:100-1:300**

**ELISA 1:5000**

**IF 1:50-200**

### Basic Information

**Clonality** Polyclonal

### Immunogen Information

**Immunogen** The antiserum was produced against synthesized peptide derived from human RBL1 around the phosphorylation site of Thr369. AA range:335-384

## Specificity

Phospho-p107 (T369) Polyclonal Antibody detects endogenous levels of p107 protein only when phosphorylated at T369. The name of modified sites may be influenced by many factors, such as species (the modified site was not originally found in human samples) and the change of protein sequence (the previous protein sequence is incomplete, and the protein sequence may be prolonged with the development of protein sequencing technology). When naming, we will use the "numbers" in historical reference to keep the sites consistent with the reports. The antibody binds to the following modification sequence (lowercase letters are modification sites):PStPL

## Target Information

**Gene name** RBL1

**Protein Name** Retinoblastoma-like protein 1

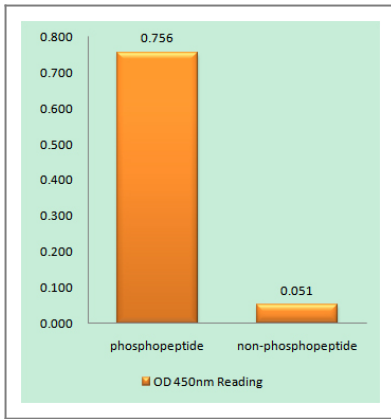
Organism	Gene ID	UniProt ID
Human	<a href="#">5933</a> ;	<a href="#">P28749</a> ;
Mouse	<a href="#">19650</a> ;	<a href="#">Q64701</a> ;

**Cellular Localization** Nucleus .

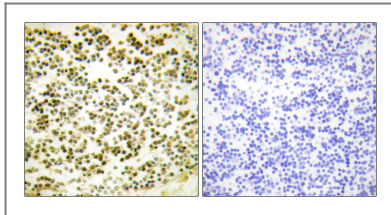
**Tissue specificity** Testis ,

**Function** Function:Key regulator of entry into cell division. Directly involved in heterochromatin formation by maintaining overall chromatin structure and , in particular , that of constitutive heterochromatin by stabilizing histone methylation. Recruits and targets histone methyltransferases SUV420H1 and SUV420H2 , leading to epigenetic transcriptional repression. Controls histone H4 'Lys-20' trimethylation. Probably acts as a transcription repressor by recruiting chromatin-modifying enzymes to promoters. Potent inhibitor of E2F-mediated trans-activation. Forms a complex with adenovirus E1A and with SV40 large T antigen. May bind and modulate functionally certain cellular proteins with which T and E1A compete for pocket binding. May act as a tumor suppressor. ,PTM:Exists in both phosphorylated and unphosphorylated forms , and T , but not E1A , binds only to the unphosphorylated form. Cell-cycle arrest properties are inactivated by phosphorylation on Thr-332 , Ser-640 , Ser-964 and Ser-975 by CDK4. ,similarity:Belongs to the retinoblastoma protein (RB) family. ,subunit:Interacts with SUV420H1 and SUV420H2 (By similarity) . Component of the DREAM complex (also named LINC complex) at least composed of E2F4 , E2F5 , LIN9 , LIN37 , LIN52 , LIN54 , MYBL1 , MYBL2 , RBL1 , RBL2 , RBBP4 , TFDP1 and TFDP2. The complex exists in quiescent cells where it represses cell cycle-dependent genes. It dissociates in S phase when LIN9 , LIN37 , LIN52 and LIN54 form a subcomplex that binds to MYBL2. Interacts with AATF. Interacts with KDM5A. Interacts with SV40 and JC virus large T antigens. ,

## Validation Data



Enzyme-Linked Immunosorbent Assay (Phospho-ELISA) for Immunogen Phosphopeptide (Phospho-left) and Non-Phosphopeptide (Phospho-right), using RBL1 (Phospho-Thr369) Antibody



Immunohistochemistry analysis of paraffin-embedded human lymph node, using RBL1 (Phospho-Thr369) Antibody. The picture on the right is blocked with the phospho peptide.

## Contact information

Orders: [order.cn@immunoway.com](mailto:order.cn@immunoway.com)  
 Support: [support.cn@immunoway.com](mailto:support.cn@immunoway.com)  
 Telephone: 400-8787-807(China)  
 Website: <http://www.immunoway.com.cn>  
 Address: 2200 Ringwood Ave San Jose, CA 95131 USA



Please scan the QR code to access additional product information:  
**p107 (Phospho Thr369) Rabbit pAb**

For Research Use Only. Not for Use in Diagnostic Procedures.

[Antibody](#) | [ELISA Kits](#) | [Protein](#) | [Reagents](#)