

## p40-phox (Phospho Thr154) Rabbit pAb

CatalogNo: YP0971

### | Key Features

#### Host Species

- Rabbit

#### Reactivity

- Human, Mouse

#### Applications

- IHC, IF, ELISA

#### MW

- 39kD (Calculated)

#### Isotype

- IgG

### | Recommended Dilution Ratios

IHC 1:100-1:300

ELISA 1:5000

IF 1:50-200

### | Storage

#### Storage\*

-15°C to -25°C/1 year (Do not lower than -25°C)

#### Formulation

Liquid in PBS containing 50% glycerol, 0.5% BSA and 0.02% sodium azide.

### | Basic Information

#### Clonality

Polyclonal

### | Immunogen Information

#### Immunogen

The antiserum was produced against synthesized peptide derived from human p40 phox around the phosphorylation site of Thr154. AA range:120-169

#### Specificity

Phospho-p40-phox (T154) Polyclonal Antibody detects endogenous levels of p40-phox protein only when phosphorylated at T154. The name of modified sites may be influenced by many factors, such as species (the modified site was not originally found in human samples) and the change of protein sequence (the previous protein sequence is incomplete, and the protein sequence may be prolonged with the development of protein sequencing technology). When naming, we will use the "numbers" in historical reference to keep the sites consistent with the reports. The antibody binds to the following modification sequence (lowercase letters are modification sites): PRtRK

## Target Information

**Gene name** NCF4

**Protein Name** Neutrophil cytosol factor 4

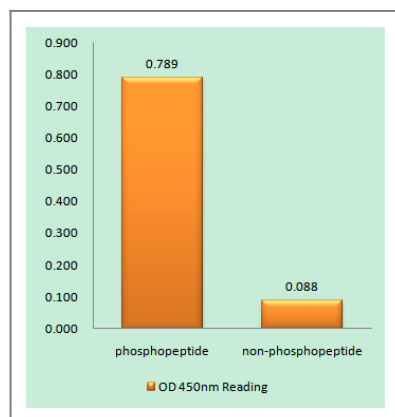
Organism	Gene ID	UniProt ID
Human	<a href="#">4689</a> ;	<a href="#">Q15080</a> ;
Mouse	<a href="#">17972</a> ;	<a href="#">P97369</a> ;

**Cellular Localization** Cytoplasm, cytosol . Endosome membrane ; Peripheral membrane protein ; Cytoplasmic side . Membrane ; Peripheral membrane protein .

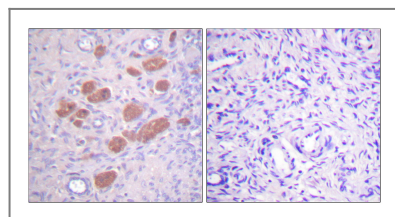
**Tissue specificity** Expression is restricted to hematopoietic cells.

**Function** Function:Component of the NADPH-oxidase, a multicomponent enzyme system responsible for the oxidative burst in which electrons are transported from NADPH to molecular oxygen, generating reactive oxidant intermediates. It may be important for the assembly and/or activation of the NADPH-oxidase complex.,similarity:Contains 1 PX (phox homology) domain.,similarity:Contains 1 SH3 domain.,subunit:p40-PHOX associates primarily with p67-PHOX to form a complex with p47-PHOX.,tissue specificity:Expression is restricted to hematopoietic cells.,

## Validation Data



Enzyme-Linked Immunosorbent Assay (Phospho-ELISA) for Immunogen Phosphopeptide (Phospho-left) and Non-Phosphopeptide (Phospho-right), using p40 phox (Phospho-Thr154) Antibody



Immunohistochemistry analysis of paraffin-embedded human ovary, using p40 phox (Phospho-Thr154) Antibody. The picture on the right is blocked with the phospho peptide.

## Contact information

Orders: order.cn@immunoway.com  
Support: support.cn@immunoway.com  
Telephone: 400-8787-807(China)  
Website: <http://www.immunoway.com.cn>  
Address: 2200 Ringwood Ave San Jose, CA 95131 USA



Please scan the QR code  
to access additional  
product information:  
**p40-phox (Phospho  
Thr154) Rabbit pAb**

---

For Research Use Only. Not for Use in Diagnostic Procedures.

[Antibody](#) | [ELISA Kits](#) | [Protein](#) | [Reagents](#)