

## RyR-2 (Phospho Ser2808) Rabbit pAb

CatalogNo: YP0967

### Key Features

#### Host Species

- Rabbit

#### Reactivity

- Human, Mouse, Rat

#### Applications

- IHC, IF, ELISA

#### MW

- 564kD (Calculated)

#### Isotype

- IgG

### Storage

**Storage\*** -15°C to -25°C/1 year (Do not lower than -25°C)

**Formulation** Liquid in PBS containing 50% glycerol, 0.5% BSA and 0.02% sodium azide.

### Recommended Dilution Ratios

**IHC 1:100-1:300**

**ELISA 1:10000**

**IF 1:50-200**

### Basic Information

**Clonality** Polyclonal

### Immunogen Information

**Immunogen** The antiserum was produced against synthesized peptide derived from human RyR2 around the phosphorylation site of Ser2808. AA range: 2774-2823

**Specificity** Phospho-RyR-2 (S2808) Polyclonal Antibody detects endogenous levels of RyR-2 protein only when phosphorylated at S2808. The name of modified sites may be influenced by many factors, such as species (the modified site was not originally found in human samples) and the change of protein sequence (the previous protein sequence is incomplete, and the protein sequence may be prolonged with the development of protein sequencing technology). When naming, we will use the "numbers" in historical reference to keep the sites consistent with the reports. The antibody binds to the following modification sequence (lowercase letters are modification sites): RIsQT

---

## | Target Information

**Gene name** RYR2

**Protein Name** Ryanodine receptor 2

Organism	Gene ID	UniProt ID
Human	<a href="#">6262;</a>	<a href="#">Q92736;</a>
Mouse	<a href="#">20191;</a>	<a href="#">E9Q401;</a>
Rat	<a href="#">689560;</a>	<a href="#">B0LPN4;</a>

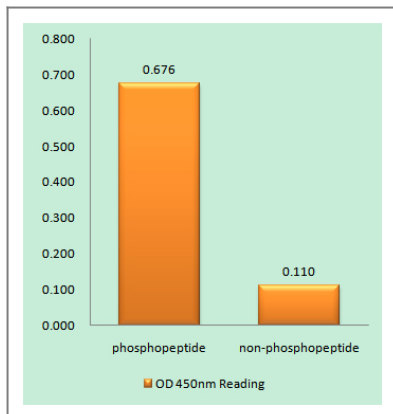
**Cellular Localization** Sarcoplasmic reticulum membrane ; Multi-pass membrane protein . Membrane ; Multi-pass membrane protein . Sarcoplasmic reticulum . The number of predicted transmembrane domains varies between orthologs, but both N-terminus and C-terminus seem to be cytoplasmic. .

**Tissue specificity** Detected in heart muscle (at protein level). Heart muscle, brain (cerebellum and hippocampus) and placenta.

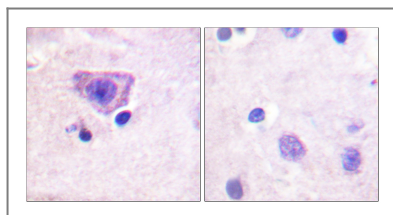
**Function** developmental stage:Expressed in myometrium during pregnancy.,Disease:Defects in RYR2 are the cause of catecholaminergic polymorphic ventricular tachycardia type 1 (CPVT1) [MIM:604772]; also known as stress-induced polymorphic ventricular tachycardia (VTSIP). CPVT1 is an autosomal dominant form of arrhythmogenic disorder characterized by stress-induced, bidirectional ventricular tachycardia that may degenerate into cardiac arrest and cause sudden death.,Disease:Defects in RYR2 are the cause of familial arrhythmogenic right ventricular dysplasia 2 (ARVD2) [MIM:600996]; also known as arrhythmogenic right ventricular cardiomyopathy 2 (ARVC2). ARVD is an autosomal dominant disease characterized by partial degeneration of the myocardium of the right ventricle, electrical instability, and sudden death. It is clinically defined by electrocardiographic and angiographic criteria; pathologic findings, replacement of ventricular myocardium with fatty and fibrous elements, preferentially involve the right ventricular free wall.,Function:Communication between transverse-tubules and sarcoplasmic reticulum. Contraction of cardiac muscle is triggered by release of calcium ions from SR following depolarization of T-tubules.,induction:By TGF-beta.,miscellaneous:Ryanodine is an alkaloid that binds to the Ca-release channel in junctional SR and modulates its activity.,miscellaneous:The calcium release channel activity resides in the C-terminal region while the remaining part of the protein constitutes the 'foot' structure spanning the junctional gap between the SR and the T-tubule. It is possible that the foot structure interacts with the cytoplasmic region of the dihydropyridine receptor.,miscellaneous:The calcium release channel is modulated by calcium ions, magnesium ions, ATP and calmodulin.,online information:Ryanodine receptor entry,online information:RYR2 entry,similarity:Belongs to the ryanodine receptor family.,similarity:Contains 2 EF-hand domains.,similarity:Contains 3 B30.2/SPRY domains.,similarity:Contains 5 MIR domains.,subunit:Homotetramer .,tissue specificity:Heart muscle, brain (cerebellum and hippocampus) and placenta.,

---

## | Validation Data



Enzyme-Linked Immunosorbent Assay (Phospho-ELISA) for Immunogen Phosphopeptide (Phospho-left) and Non-Phosphopeptide (Phospho-right), using RyR2 (Phospho-Ser2808) Antibody



Immunohistochemistry analysis of paraffin-embedded human brain, using RyR2 (Phospho-Ser2808) Antibody. The picture on the right is blocked with the phospho peptide.

## Contact information

Orders: order.cn@immunoway.com  
 Support: support.cn@immunoway.com  
 Telephone: 400-8787-807(China)  
 Website: <http://www.immunoway.com.cn>  
 Address: 2200 Ringwood Ave San Jose, CA 95131 USA



Please scan the QR code to access additional product information:  
**RyR-2 (Phospho Ser2808) Rabbit pAb**

For Research Use Only. Not for Use in Diagnostic Procedures.

[Antibody](#) | [ELISA Kits](#) | [Protein](#) | [Reagents](#)