

MOR-1 (Phospho Ser375) Rabbit pAb

CatalogNo: YP0953

Key Features

Host Species

- Rabbit

Reactivity

- Human, Mouse, Rat

Applications

- WB, IHC, IF, ELISA

MW

- 45kD (Observed)

Isotype

- IgG

Storage

Storage* -15°C to -25°C/1 year (Do not lower than -25°C)

Formulation Liquid in PBS containing 50% glycerol, 0.5% BSA and 0.02% sodium azide.

Recommended Dilution Ratios

WB 1:500-1:2000

IHC 1:100-1:300

ELISA 1:20000

IF 1:50-200

Basic Information

Clonality Polyclonal

Immunogen Information

Immunogen The antiserum was produced against synthesized peptide derived from human Opioid Receptor around the phosphorylation site of Ser375. AA range:341-390

Specificity

Phospho-MOR-1 (S375) Polyclonal Antibody detects endogenous levels of MOR-1 protein only when phosphorylated at S375. The name of modified sites may be influenced by many factors, such as species (the modified site was not originally found in human samples) and the change of protein sequence (the previous protein sequence is incomplete, and the protein sequence may be prolonged with the development of protein sequencing technology). When naming, we will use the "numbers" in historical reference to keep the sites consistent with the reports. The antibody binds to the following modification sequence (lowercase letters are modification sites):HPsTA

| Target Information

Gene name OPRM1

Protein Name Mu-type opioid receptor

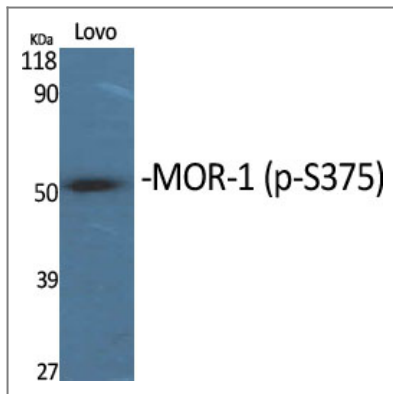
Organism	Gene ID	UniProt ID
Human	4988 ;	P35372 ;
Mouse	18390 ;	P42866 ;
Rat	25601 ;	P33535 ;

Cellular Localization Cell membrane ; Multi-pass membrane protein . Cell projection, axon . Perikaryon . Cell projection, dendrite . Endosome . Is rapidly internalized after agonist binding. . ; [Isoform 12]: Cytoplasm .

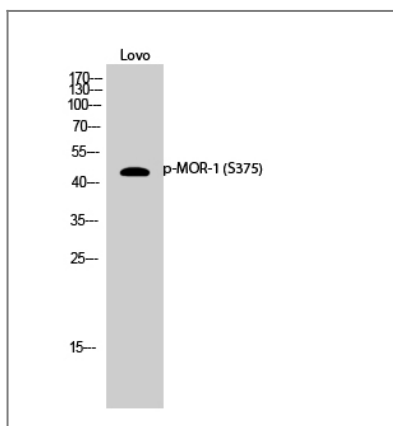
Tissue specificity Expressed in brain. Isoform 16 and isoform 17 are detected in brain.

Function Function:Inhibits neurotransmitter release by reducing calcium ion currents and increasing potassium ion conductance. Receptor for beta-endorphin.,online information:Mu opioid receptor entry,polymorphism:Variant Asp-40 does not show altered binding affinities for most opioid peptides and alkaloids tested, but it binds beta-endorphin, an endogenous opioid that activates the mu opioid receptor, approximately 3 times more tightly than the most common allelic form.,similarity:Belongs to the G-protein coupled receptor 1 family.,subunit:Forms a complex with G(alpha)z/i2 subunits and the RGSZ proteins, RGSZ17 and RGSZ20. The formation of this complex results in mu-opioid receptor desensitization. Interacts with RGSZ17 and RGSZ20.,

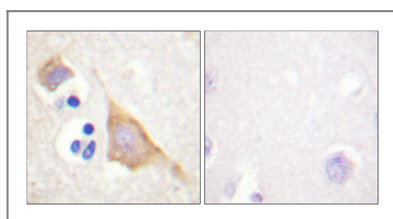
| Validation Data



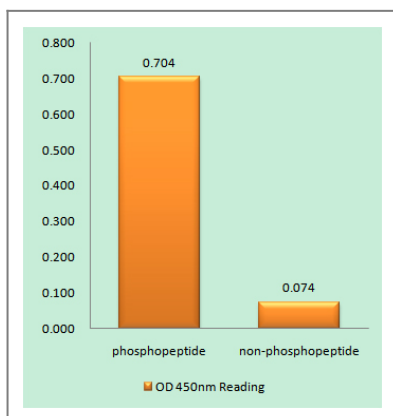
Western Blot analysis of various cells using Phospho-MOR-1 (S375) Polyclonal Antibody



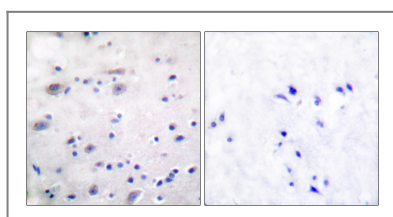
Western Blot analysis of Lovo cells using Phospho-MOR-1 (S375) Polyclonal Antibody



Immunohistochemical analysis of paraffin-embedded Human brain. Antibody was diluted at 1:100(4° overnight). High-pressure and temperature Tris-EDTA,pH8.0 was used for antigen retrieval. Negative contrl (right) obtained from antibody was pre-absorbed by immunogen peptide.



Enzyme-Linked Immunosorbent Assay (Phospho-ELISA) for Immunogen Phosphopeptide (Phospho-left) and Non-Phosphopeptide (Phospho-right), using Opioid Receptor (Phospho-Ser375) Antibody



Immunohistochemistry analysis of paraffin-embedded human brain, using Opioid Receptor (Phospho-Ser375) Antibody. The picture on the right is blocked with the phospho peptide.

Contact information

Orders: order.cn@immunoway.com
Support: support.cn@immunoway.com
Telephone: 400-8787-807(China)
Website: <http://www.immunoway.com.cn>
Address: 2200 Ringwood Ave San Jose, CA 95131 USA



Please scan the QR code
to access additional
product information:
**MOR-1 (Phospho
Ser375) Rabbit pAb**

For Research Use Only. Not for Use in Diagnostic Procedures.

[Antibody](#) | [ELISA Kits](#) | [Protein](#) | [Reagents](#)