

## DARPP-32 (Phospho Thr34) Rabbit pAb

CatalogNo: YP0950 **Orthogonal Validated** 

### Key Features

#### Host Species

- Rabbit

#### Reactivity

- Human, Mouse, Rat

#### Applications

- WB, IHC, IF, ELISA

#### MW

- 35kD (Observed)

#### Isotype

- IgG

### Storage

**Storage\*** -15°C to -25°C/1 year (Do not lower than -25°C)

**Formulation** Liquid in PBS containing 50% glycerol, 0.5% BSA and 0.02% sodium azide.

### Recommended Dilution Ratios

**WB 1:500-1:2000**

**IHC 1:100-1:300**

**IF 1:200-1:1000**

**ELISA 1:10000**

Not yet tested in other applications.

### Basic Information

**Clonality** Polyclonal

### Immunogen Information

**Immunogen** The antiserum was produced against synthesized peptide derived from human DARPP-32 around the phosphorylation site of Thr34. AA range:18-67

## Specificity

Phospho-DARPP-32 (T34) Polyclonal Antibody detects endogenous levels of DARPP-32 protein only when phosphorylated at T34. The name of modified sites may be influenced by many factors, such as species (the modified site was not originally found in human samples) and the change of protein sequence (the previous protein sequence is incomplete, and the protein sequence may be prolonged with the development of protein sequencing technology). When naming, we will use the "numbers" in historical reference to keep the sites consistent with the reports. The antibody binds to the following modification sequence (lowercase letters are modification sites):RPTPA

## Target Information

**Gene name** PPP1R1B

**Protein Name** Protein phosphatase 1 regulatory subunit 1B

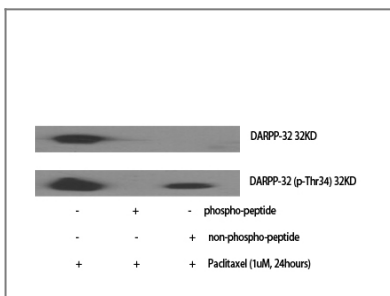
Organism	Gene ID	UniProt ID
Human	<a href="#">84152;</a>	<a href="#">Q9UD71;</a>
Mouse	<a href="#">19049;</a>	<a href="#">Q60829;</a>
Rat	<a href="#">360616;</a>	<a href="#">Q6J410;</a>

**Cellular Localization** Cytoplasm.

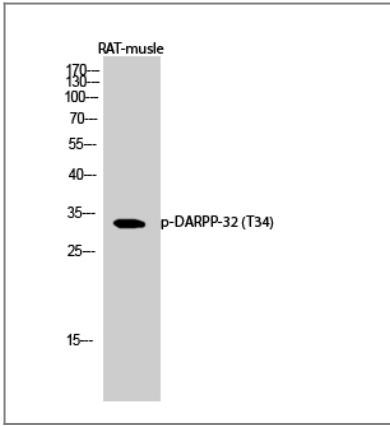
**Tissue specificity** Adipose tissue,Brain,Cerebellum,Colon,Ovary,

**Function** Function:Inhibitor of protein-phosphatase 1.,PTM:Dopamine- and cyclic AMP-regulated neuronal phosphoprotein.,PTM:Phosphorylation of Thr-34 is required for activity.,similarity:Belongs to the protein phosphatase inhibitor 1 family.,

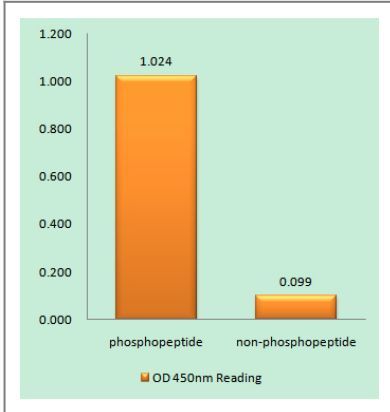
## Validation Data



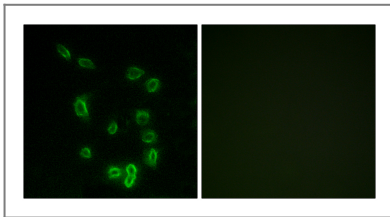
Western Blot analysis of various cells using Phospho-DARPP-32 (T34) Polyclonal Antibody diluted at 1:1000



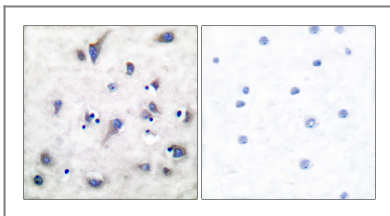
Western Blot analysis of RAT-muscle cells using Phospho-DARPP-32 (T34) Polyclonal Antibody diluted at 1:1000



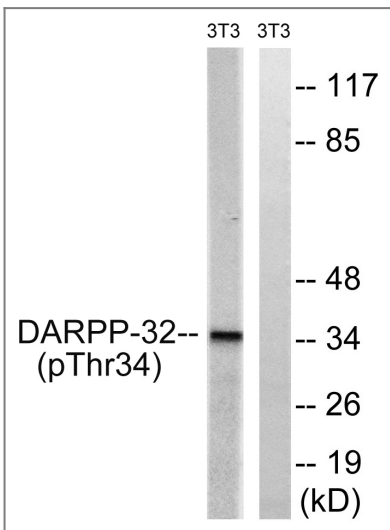
Enzyme-Linked Immunosorbent Assay (Phospho-ELISA) for Immunogen Phosphopeptide (Phospho-left) and Non-Phosphopeptide (Phospho-right), using DARPP-32 (Phospho-Thr34) Antibody



Immunofluorescence analysis of HepG2 cells, using DARPP-32 (Phospho-Thr34) Antibody. The picture on the right is blocked with the phospho peptide.



Immunohistochemistry analysis of paraffin-embedded human brain, using DARPP-32 (Phospho-Thr34) Antibody. The picture on the right is blocked with the phospho peptide.



Western blot analysis of lysates from NIH/3T3 cells treated with PMA 125ng/ml 30', using DARPP-32 (Phospho-Thr34) Antibody. The lane on the right is blocked with the phospho peptide.

## | Contact information

Orders: order.cn@immunoway.com  
Support: support.cn@immunoway.com  
Telephone: 400-8787-807(China)  
Website: <http://www.immunoway.com.cn>  
Address: 2200 Ringwood Ave San Jose, CA 95131 USA



Please scan the QR code  
to access additional  
product information:  
**DARPP-32 (Phospho  
Thr34) Rabbit pAb**

---

For Research Use Only. Not for Use in Diagnostic Procedures.

[Antibody](#) | [ELISA Kits](#) | [Protein](#) | [Reagents](#)