

Vav2 (Phospho Tyr142) Rabbit pAb

CatalogNo: YP0949

Orthogonal Validated 

Key Features

Host Species

- Rabbit

Reactivity

- Human, Mouse

Applications

- WB, IHC, IF, ELISA

MW

- 101kD (Observed)

Isotype

- IgG

Recommended Dilution Ratios

WB 1:500-1:2000**IHC 1:100-1:300****IF 1:200-1:1000****ELISA 1:10000****Not yet tested in other applications.**

Storage

Storage* -15°C to -25°C/1 year (Do not lower than -25°C)**Formulation** Liquid in PBS containing 50% glycerol, 0.5% BSA and 0.02% sodium azide.

Basic Information

Clonality Polyclonal

Immunogen Information

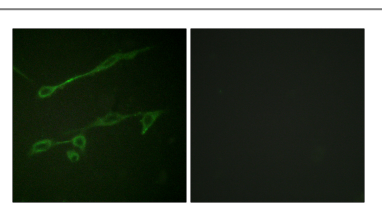
Immunogen The antiserum was produced against synthesized peptide derived from human VAV2 around the phosphorylation site of Tyr142. AA range: 108-157

Specificity Phospho-Vav2 (Y142) Polyclonal Antibody detects endogenous levels of Vav2 protein only when phosphorylated at Y142. The name of modified sites may be influenced by many factors, such as species (the modified site was not originally found in human samples) and the change of protein sequence (the previous protein sequence is incomplete, and the protein sequence may be prolonged with the development of protein sequencing technology). When naming, we will use the "numbers" in historical reference to keep the sites consistent with the reports. The antibody binds to the following modification sequence (lowercase letters are modification sites):DVyRS

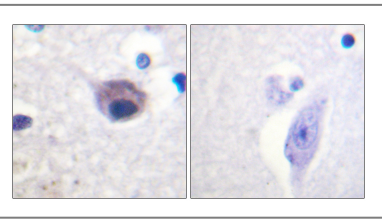
Target Information

Gene name	VAV2		
Protein Name	Guanine nucleotide exchange factor VAV2		
	Organism	Gene ID	UniProt ID
	Human	7410 ;	P52735 ;
	Mouse	22325 ;	Q60992 ;
Cellular Localization	cytosol,plasma membrane,		
Tissue specificity	Widely expressed.		
Function	Function:Guanine nucleotide exchange factor for the Rho family of Ras-related GTPases.,similarity:Contains 1 CH (calponin-homology) domain.,similarity:Contains 1 DH (DBL-homology) domain.,similarity:Contains 1 PH domain.,similarity:Contains 1 phorbol-ester/DAG-type zinc finger.,similarity:Contains 1 SH2 domain.,similarity:Contains 2 SH3 domains.,tissue specificity:Widely expressed.,		

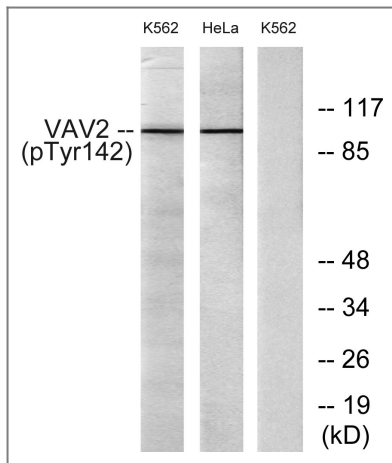
Validation Data



Immunofluorescence analysis of NIH/3T3 cells, using VAV2 (Phospho-Tyr142) Antibody. The picture on the right is blocked with the phospho peptide.



Immunohistochemistry analysis of paraffin-embedded human brain, using VAV2 (Phospho-Tyr142) Antibody. The picture on the right is blocked with the phospho peptide.



Western blot analysis of lysates from HeLa cells and K562 cells treated with TNF 20ng/ml 30', using VAV2 (Phospho-Tyr142) Antibody. The lane on the right is blocked with the phospho peptide.

Contact information

Orders: order.cn@immunoway.com
 Support: support.cn@immunoway.com
 Telephone: 400-8787-807(China)
 Website: <http://www.immunoway.com.cn>
 Address: 2200 Ringwood Ave San Jose, CA 95131 USA



Please scan the QR code to access additional product information:
Vav2 (Phospho Tyr142) Rabbit pAb

For Research Use Only. Not for Use in Diagnostic Procedures.

[Antibody](#) | [ELISA Kits](#) | [Protein](#) | [Reagents](#)