

GFAP (Phospho Ser38) Rabbit pAb

CatalogNo: YP0948

Key Features

Host Species

- Rabbit

Reactivity

- Human,Mouse,Rat

Applications

- WB,IHC,IF,ELISA

MW

- 50kD (Observed)

Isotype

- IgG

Storage

Storage* -15°C to -25°C/1 year(Do not lower than -25°C)

Formulation Liquid in PBS containing 50% glycerol, 0.5% BSA and 0.02% sodium azide.

Recommended Dilution Ratios

WB 1:500-1:2000

IHC 1:100-1:300

IF 1:200-1:1000

ELISA 1:5000

Not yet tested in other applications.

Basic Information

Clonality Polyclonal

Immunogen Information

Immunogen The antiserum was produced against synthesized peptide derived from human GFAP around the phosphorylation site of Ser38. AA range:11-60

Specificity

Phospho-GFAP (S38) Polyclonal Antibody detects endogenous levels of GFAP protein only when phosphorylated at S38. The name of modified sites may be influenced by many factors, such as species (the modified site was not originally found in human samples) and the change of protein sequence (the previous protein sequence is incomplete, and the protein sequence may be prolonged with the development of protein sequencing technology). When naming, we will use the "numbers" in historical reference to keep the sites consistent with the reports. The antibody binds to the following modification sequence (lowercase letters are modification sites):RLSLA

| Target Information

Gene name GFAP

Protein Name Glial fibrillary acidic protein

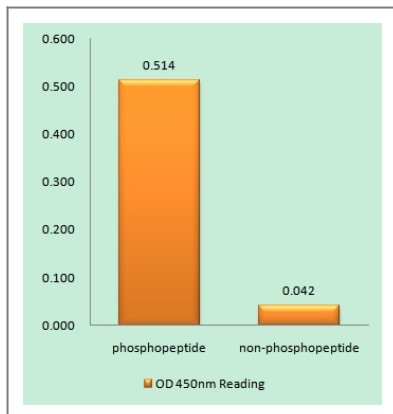
Organism	Gene ID	UniProt ID
Human	2670;	P14136;
Mouse		P03995;

Cellular Localization Cytoplasm . Associated with intermediate filaments. .

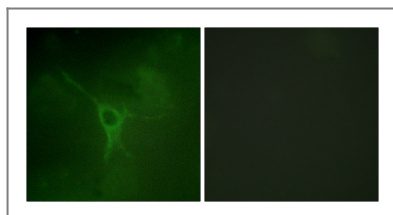
Tissue specificity Expressed in cells lacking fibronectin.

Function Alternative products:Isoforms differ in the C-terminal region which is encoded by alternative exons,Disease:Defects in GFAP are a cause of Alexander disease (ALEXD) [MIM:203450]. Alexander disease is a rare disorder of the central nervous system. It is a progressive leukoencephalopathy whose hallmark is the widespread accumulation of Rosenthal fibers which are cytoplasmic inclusions in astrocytes. The most common form affects infants and young children, and is characterized by progressive failure of central myelination, usually leading to death usually within the first decade. Infants with Alexander disease develop a leukoencephalopathy with macrocephaly, seizures, and psychomotor retardation. Patients with juvenile or adult forms typically experience ataxia, bulbar signs and spasticity, and a more slowly progressive course.,Function:GFAP, a class-III intermediate filament, is a cell-specific marker that, during the development of the central nervous system, distinguishes astrocytes from other glial cells.,online information:GFAP entry,similarity:Belongs to the intermediate filament family.,subcellular location:Associated with intermediate filaments.,subunit:Interacts with SYNM (By similarity). Isoform 3 interacts with PSEN1 (via N-terminus),,tissue specificity:Expressed in cells lacking fibronectin.,

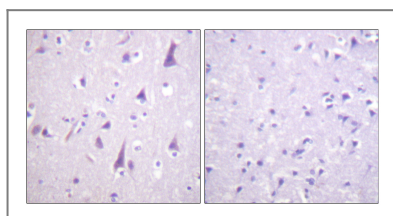
| Validation Data



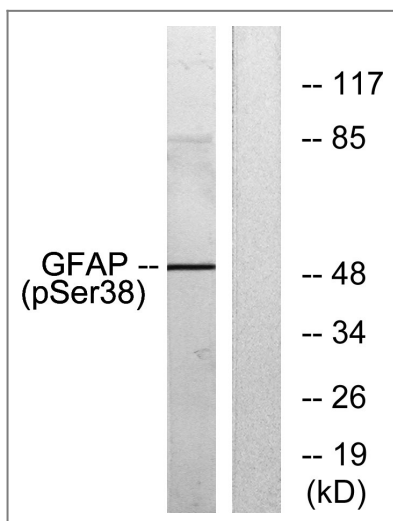
Enzyme-Linked Immunosorbent Assay (Phospho-ELISA) for Immunogen Phosphopeptide (Phospho-left) and Non-Phosphopeptide (Phospho-right), using GFAP (Phospho-Ser38) Antibody



Immunofluorescence analysis of COS7 cells, using GFAP (Phospho-Ser38) Antibody. The picture on the right is blocked with the phospho peptide.



Immunohistochemistry analysis of paraffin-embedded human brain, using GFAP (Phospho-Ser38) Antibody. The picture on the right is blocked with the phospho peptide.



Western blot analysis of lysates from HeLa cells, using GFAP (Phospho-Ser38) Antibody. The lane on the right is blocked with the phospho peptide.

Contact information

Orders: order.cn@immunoway.com
 Support: support.cn@immunoway.com
 Telephone: 400-8787-807(China)
 Website: <http://www.immunoway.com.cn>
 Address: 2200 Ringwood Ave San Jose, CA 95131 USA



Please scan the QR code to access additional product information:
GFAP (Phospho Ser38) Rabbit pAb

