

## FANCA (Phospho Ser1149) Rabbit pAb

CatalogNo: YP0943 **Orthogonal Validated** 

### Key Features

#### Host Species

- Rabbit

#### Reactivity

- Human, Mouse, Rat

#### Applications

- WB, IHC, IF, ELISA

#### MW

- 162kD (Observed)

#### Isotype

- IgG

### Storage

**Storage\*** -15°C to -25°C/1 year (Do not lower than -25°C)

**Formulation** Liquid in PBS containing 50% glycerol, 0.5% BSA and 0.02% sodium azide.

### Recommended Dilution Ratios

**WB 1:500-1:2000**

**IHC 1:100-1:300**

**IF 1:200-1:1000**

**ELISA 1:5000**

**Not yet tested in other applications.**

### Basic Information

**Clonality** Polyclonal

### Immunogen Information

**Immunogen** The antiserum was produced against synthesized peptide derived from human FANCA around the phosphorylation site of Ser1149. AA range:1121-1170

**Specificity**

Phospho-FANCA (S1149) Polyclonal Antibody detects endogenous levels of FANCA protein only when phosphorylated at S1149. The name of modified sites may be influenced by many factors, such as species (the modified site was not originally found in human samples) and the change of protein sequence (the previous protein sequence is incomplete, and the protein sequence may be prolonged with the development of protein sequencing technology). When naming, we will use the "numbers" in historical reference to keep the sites consistent with the reports. The antibody binds to the following modification sequence (lowercase letters are modification sites):DPsLM

**| Target Information**

**Gene name** FANCA

**Protein Name** Fanconi anemia group A protein

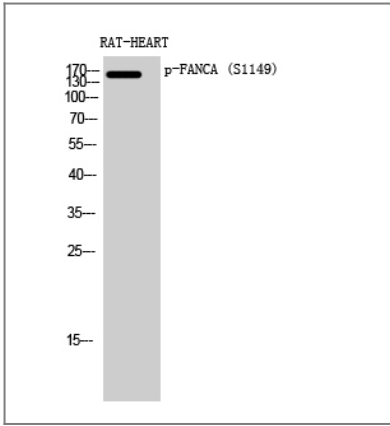
Organism	Gene ID	UniProt ID
Human	<a href="#">2175;</a>	<a href="#">O15360;</a>
Mouse		<a href="#">Q9JL70;</a>

**Cellular Localization** Nucleus. Cytoplasm. The major form is nuclear. The minor form is cytoplasmic.

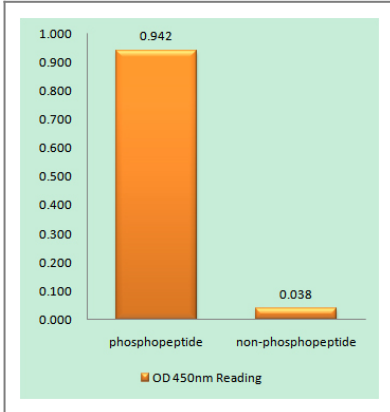
**Tissue specificity** Cervix, Epithelium, Lymphoblast, Ovary, PCR rescued clones,

**Function** Disease: Defects in FANCA are a cause of Fanconi anemia (FA) [MIM:227650]. FA is a genetically heterogeneous, autosomal recessive disorder characterized by progressive pancytopenia, a diverse assortment of congenital malformations, and a predisposition to the development of malignancies. At the cellular level it is associated with hypersensitivity to DNA-damaging agents, chromosomal instability (increased chromosome breakage), and defective DNA repair. Function: DNA repair protein that may operate in a postreplication repair or a cell cycle checkpoint function. May be involved in interstrand DNA cross-link repair and in the maintenance of normal chromosome stability. PTM: Phosphorylated upon DNA damage, probably by ATM or ATR. Phosphorylation is required for the formation of the nuclear complex. Not phosphorylated in cells derived from groups A, B, C, E, F, G, and H. subcellular location: The major form is nuclear. The minor form is cytoplasmic. subunit: Belongs to the multisubunit FA complex composed of FANCA, FANCB, FANCC, FANCE, FANCF, FANCG, FANCL/PHF9 and FANCM. The complex is not found in FA patients.

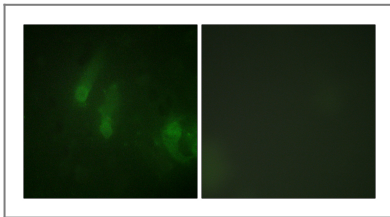
**| Validation Data**



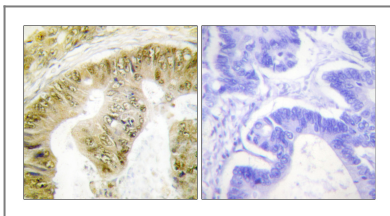
Western Blot analysis of RAT-HEART cells using Phospho-FANCA (S1149) Polyclonal Antibody diluted at 1:500



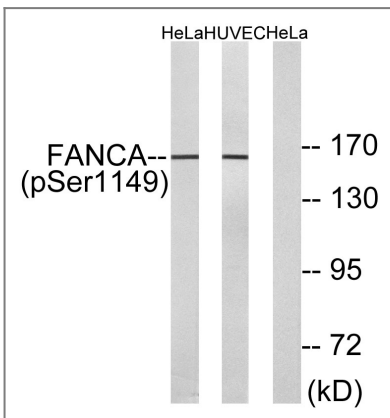
Enzyme-Linked Immunosorbent Assay (Phospho-ELISA) for Immunogen Phosphopeptide (Phospho-left) and Non-Phosphopeptide (Phospho-right), using FANCA (Phospho-Ser1149) Antibody



Immunofluorescence analysis of HeLa cells, using FANCA (Phospho-Ser1149) Antibody. The picture on the right is blocked with the phospho peptide.



Immunohistochemistry analysis of paraffin-embedded human colon carcinoma, using FANCA (Phospho-Ser1149) Antibody. The picture on the right is blocked with the phospho peptide.



Western blot analysis of lysates from HeLa cells treated with IGF 100ng/ml 10' and HUVEC cells treated with EGF 200ng/ml 30', using FANCA (Phospho-Ser1149) Antibody. The lane on the right is blocked with the phospho peptide.

Orders: order.cn@immunoway.com  
Support: support.cn@immunoway.com  
Telephone: 400-8787-807(China)  
Website: <http://www.immunoway.com.cn>  
Address: 2200 Ringwood Ave San Jose, CA 95131 USA



Please scan the QR code to access additional product information:  
**FANCA (Phospho Ser1149) Rabbit pAb**

---

For Research Use Only. Not for Use in Diagnostic Procedures.

[Antibody](#) | [ELISA Kits](#) | [Protein](#) | [Reagents](#)