

DREAM (Phospho Ser63) Rabbit pAb

CatalogNo: YP0930 **Orthogonal Validated** 

Key Features

Host Species

- Rabbit

Reactivity

- Human, Mouse

Applications

- WB, IHC, IF, ELISA

MW

- 29kD (Observed)

Isotype

- IgG

Storage

Storage* -15°C to -25°C/1 year (Do not lower than -25°C)

Formulation Liquid in PBS containing 50% glycerol, 0.5% BSA and 0.02% sodium azide.

Recommended Dilution Ratios

WB 1:500-1:2000

IHC 1:100-1:300

IF 1:200-1:1000

ELISA 1:20000

Not yet tested in other applications.

Basic Information

Clonality Polyclonal

Immunogen Information

Immunogen The antiserum was produced against synthesized peptide derived from human Calsenilin/KCNIP3 around the phosphorylation site of Ser63. AA range: 29-78

Specificity

Phospho-DREAM (S63) Polyclonal Antibody detects endogenous levels of DREAM protein only when phosphorylated at S63. The name of modified sites may be influenced by many factors, such as species (the modified site was not originally found in human samples) and the change of protein sequence (the previous protein sequence is incomplete, and the protein sequence may be prolonged with the development of protein sequencing technology). When naming, we will use the "numbers" in historical reference to keep the sites consistent with the reports. The antibody binds to the following modification sequence (lowercase letters are modification sites):DSsDS

Target Information

Gene name KCNIP3

Protein Name Calsenilin

| Organism | Gene ID | UniProt ID |
|----------|-------------------------|--------------------------|
| Human | 30818 ; | Q9Y2W7 ; |
| Mouse | 56461 ; | Q9QXT8 ; |

Cellular Localization

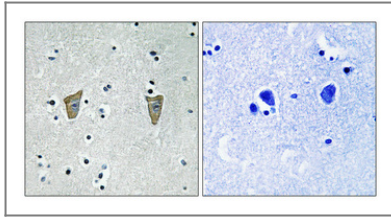
Cytoplasm . Cell membrane ; Lipid-anchor . Endoplasmic reticulum . Golgi apparatus . Nucleus . Also membrane-bound, associated with the plasma membrane (PubMed:15485870). In the presence of PSEN2 associated with the endoplasmic reticulum and Golgi. The sumoylated form is present only in the nucleus. .

Tissue specificity Highly expressed in brain. Widely expressed at lower levels. Expression levels are elevated in brain cortex regions affected by Alzheimer disease.

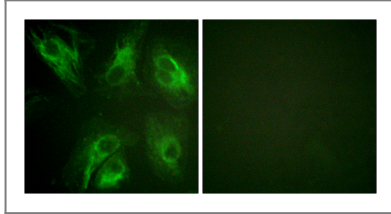
Function

Function:Calcium-dependent transcriptional repressor that binds to the DRE element of genes including PDYN and FOS. Affinity for DNA is reduced upon binding to calcium and enhanced by binding to magnesium. Seems to be involved in nociception.,Function:May play a role in the regulation of PSEN2 proteolytic processing and apoptosis. Together with PSEN2 involved in modulation of beta-amyloid formation.,Function:Regulatory subunit of Kv4/D (Shal)-type voltage-gated rapidly inactivating A-type potassium channels. Probably modulates channels density, inactivation kinetics and rate of recovery from inactivation in a calcium-dependent and isoform-specific manner. In vitro, modulates KCND2/Kv4.2 and KCND3/Kv4.3 currents. Involved in KCND2 and probably KCND3 trafficking to the cell surface.,PTM:Palmitoylated. Palmitoylation enhances association with the plasma membrane.,PTM:Phosphorylation at Ser-63 inhibits cleavage by CASP3.,PTM:Proteolytically cleaved by caspase-3.,similarity:Belongs to the recoverin family.,similarity:Contains 4 EF-hand domains.,subcellular location:Also membrane-bound, associated with the plasma membrane (By similarity). In the presence of PSEN2 associated with the endoplasmic reticulum and Golgi.,subunit:Binds to DNA as a homomultimer. Dimerization is induced by binding to calcium. Component of heteromultimeric potassium channels. Interacts with KCND2 and KCND3 (By similarity). Interacts with the C-terminus of PSEN1 and PSEN2 and with PSEN2 CTF subunit. Associates with KCN1.,tissue specificity:Highly expressed in brain. Widely expressed at lower levels. Expression levels are elevated in brain cortex regions affected by Alzheimer disease.,

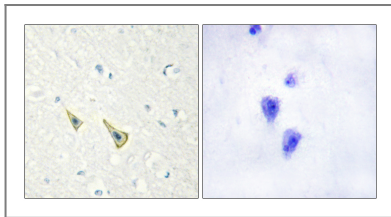
Validation Data



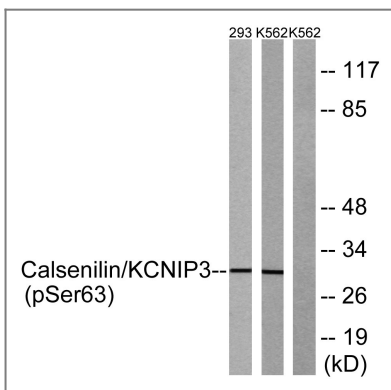
Immunohistochemical analysis of paraffin-embedded Human brain. Antibody was diluted at 1:100(4° overnight). High-pressure and temperature Tris-EDTA,pH8.0 was used for antigen retrieval. Negative control (right) obtained from antibody was pre-absorbed by immunogen peptide.



Immunofluorescence analysis of HeLa cells, using Calsenilin/KCNIP3 (Phospho-Ser63) Antibody. The picture on the right is blocked with the phospho peptide.



Immunohistochemistry analysis of paraffin-embedded human brain, using Calsenilin/KCNIP3 (Phospho-Ser63) Antibody. The picture on the right is blocked with the phospho peptide.



Western blot analysis of lysates from K562 cells treated with forskolin 40nM 30' and 293 cells treated with PMA 125ng/ml 30', using Calsenilin/KCNIP3 (Phospho-Ser63) Antibody. The lane on the right is blocked with the phospho peptide.

Contact information

Orders: order.cn@immunoway.com
Support: support.cn@immunoway.com
Telephone: 400-8787-807(China)
Website: <http://www.immunoway.com.cn>
Address: 2200 Ringwood Ave San Jose, CA 95131 USA



Please scan the QR code to access additional product information:
DREAM (Phospho Ser63) Rabbit pAb