

## Histone H1 (Phospho Thr17) Rabbit pAb

CatalogNo: YP0925 **Orthogonal Validated** 

### Key Features

#### Host Species

- Rabbit

#### Reactivity

- Human, Mouse, Monkey

#### Applications

- WB, IHC, IF, ELISA

#### MW

- 31kD (Observed)

#### Isotype

- IgG

### Storage

**Storage\*** -15°C to -25°C/1 year (Do not lower than -25°C)

**Formulation** Liquid in PBS containing 50% glycerol, 0.5% BSA and 0.02% sodium azide.

### Recommended Dilution Ratios

**WB 1:500-1:2000**

**IHC 1:100-1:300**

**IF 1:200-1:1000**

**ELISA 1:10000**

Not yet tested in other applications.

### Basic Information

**Clonality** Polyclonal

### Immunogen Information

**Immunogen** The antiserum was produced against synthesized peptide derived from human Histone H1 around the phosphorylation site of Thr17. AA range:1-50

## Specificity

Phospho-Histone H1 (T17) Polyclonal Antibody detects endogenous levels of Histone H1 protein only when phosphorylated at T17. The name of modified sites may be influenced by many factors, such as species (the modified site was not originally found in human samples) and the change of protein sequence (the previous protein sequence is incomplete, and the protein sequence may be prolonged with the development of protein sequencing technology). When naming, we will use the "numbers" in historical reference to keep the sites consistent with the reports. The antibody binds to the following modification sequence (lowercase letters are modification sites):EKtPV

## Target Information

**Gene name** HIST1H1B

**Protein Name** Histone H1.5

Organism	Gene ID	UniProt ID
Human	<a href="#">3009</a> ; <a href="#">3007</a> ; <a href="#">3008</a> ;	<a href="#">P16401</a> ; <a href="#">P16402</a> ; <a href="#">P10412</a> ;
Mouse	<a href="#">56702</a> ; <a href="#">14957</a> ; <a href="#">50709</a> ;	

### Cellular Localization

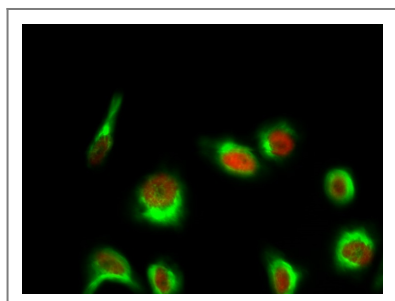
Nucleus. Chromosome. According to PubMed:15911621 more commonly found in heterochromatin. According to PubMed:10997781 associates with actively transcribed chromatin and not heterochromatin.

**Tissue specificity** Ubiquitous. Expressed in the majority of the cell lines tested and in testis.

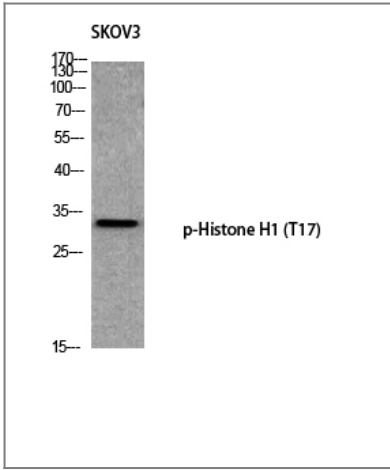
### Function

Function:Histones H1 are necessary for the condensation of nucleosome chains into higher order structures.,similarity:Belongs to the histone H1/H5 family.,

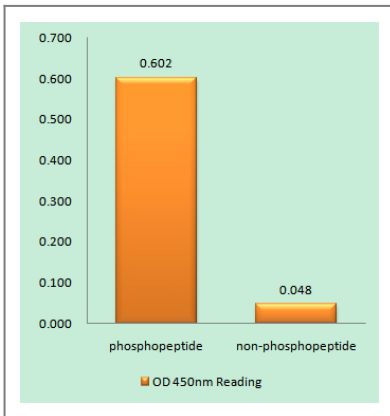
## Validation Data



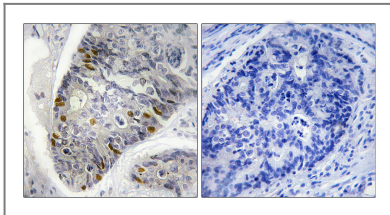
Immunofluorescence analysis of HeLa cell. 1, mouse Tubulin Antibody YM3505 (green) was diluted at 1:200(4° overnight). Histone H1 (Phospho Thr17) Rabbit pAb(green) was diluted at 1:200(4° overnight). 2, Goat Anti Rabbit Alexa Fluor 594 Catalog:RS3611 was diluted at 1:1000(room temperature, 50min). Goat Anti Mouse Alexa Fluor 488 Catalog:RS3208 was diluted at 1:1000(room temperature, 50min).



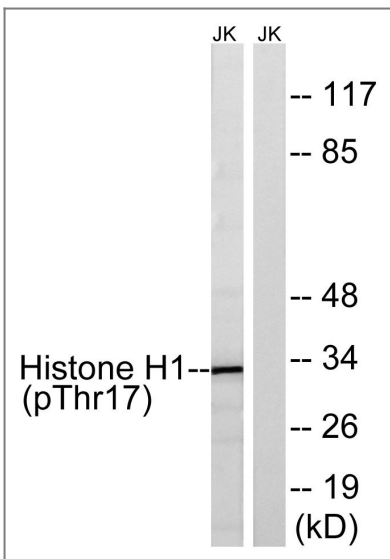
Western blot analysis of SKOV3 using p-Histone H1 (T17) antibody. Antibody was diluted at 1:1000 cells nucleus extracted by Minute TM Cytoplasmic and Nuclear Fractionation kit (SC-003, Inventbiotech, MN, USA).



Enzyme-Linked Immunosorbent Assay (Phospho-ELISA) for Immunogen Phosphopeptide (Phospho-left) and Non-Phosphopeptide (Phospho-right), using Histone H1 (Phospho-Thr17) Antibody



Immunohistochemistry analysis of paraffin-embedded human colon carcinoma, using Histone H1 (Phospho-Thr17) Antibody. The picture on the right is blocked with the phospho peptide.



Western blot analysis of lysates from Jurkat cells treated with UV 15', using Histone H1 (Phospho-Thr17) Antibody. The lane on the right is blocked with the phospho peptide.

## Contact information

Orders: order.cn@immunoway.com  
Support: support.cn@immunoway.com  
Telephone: 400-8787-807(China)  
Website: <http://www.immunoway.com.cn>  
Address: 2200 Ringwood Ave San Jose, CA 95131 USA



Please scan the QR code  
to access additional  
product information:  
**Histone H1**  
**(Phospho Thr17)**  
**Rabbit pAb**

---

For Research Use Only. Not for Use in Diagnostic Procedures.

[Antibody](#) | [ELISA Kits](#) | [Protein](#) | [Reagents](#)