

DNAM-1 (Phospho Ser329) Rabbit pAb

CatalogNo: YP0914

Key Features

Host Species

- Rabbit

Reactivity

- Human, Mouse, Monkey

Applications

- WB, IHC, IF, ELISA

MW

- 60kD (Observed)

Isotype

- IgG

Recommended Dilution Ratios

WB 1:500-1:2000

IHC 1:100-1:300

IF 1:200-1:1000

ELISA 1:40000

Not yet tested in other applications.

Storage

Storage* -15°C to -25°C/1 year (Do not lower than -25°C)

Formulation Liquid in PBS containing 50% glycerol, 0.5% BSA and 0.02% sodium azide.

Basic Information

Clonality Polyclonal

Immunogen Information

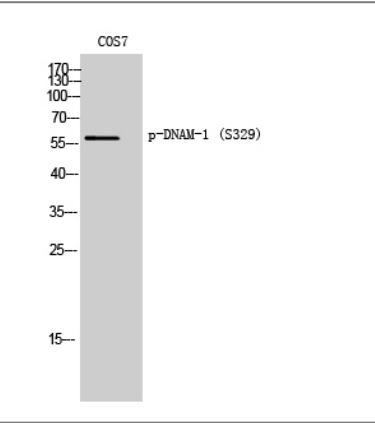
Immunogen The antiserum was produced against synthesized peptide derived from human CD226/DNAM-1 around the phosphorylation site of Ser329. AA range: 287-336

Specificity Phospho-DNAM-1 (S329) Polyclonal Antibody detects endogenous levels of DNAM-1 protein only when phosphorylated at S329. The name of modified sites may be influenced by many factors, such as species (the modified site was not originally found in human samples) and the change of protein sequence (the previous protein sequence is incomplete, and the protein sequence may be prolonged with the development of protein sequencing technology). When naming, we will use the "numbers" in historical reference to keep the sites consistent with the reports. The antibody binds to the following modification sequence (lowercase letters are modification sites):TFsRR

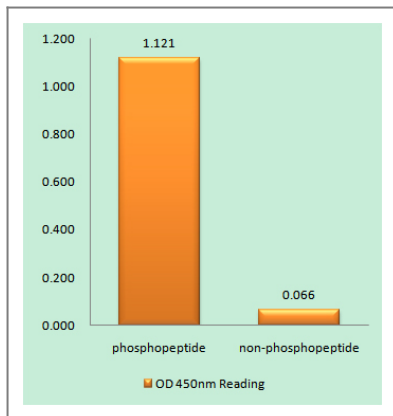
Target Information

Gene name	CD226		
Protein Name	CD226 antigen		
	Organism	Gene ID	UniProt ID
	Human	10666 ;	Q15762 ;
	Mouse	225825 ;	Q8K4F0 ;
Cellular Localization	Cell membrane ; Single-pass type I membrane protein .		
Tissue specificity	Expressed by peripheral blood T-lymphocytes.		
Function	Function:Receptor involved in intercellular adhesion, lymphocyte signaling, cytotoxicity and lymphokine secretion mediated by cytotoxic T-lymphocyte (CTL) and NK cell.,PTM:Phosphorylated.,similarity:Contains 2 Ig-like C2-type (immunoglobulin-like) domains.,subunit:Interacts with PVR and PVRL2.,tissue specificity:Expressed by peripheral blood T-lymphocytes.,		

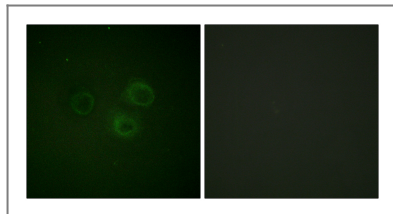
Validation Data



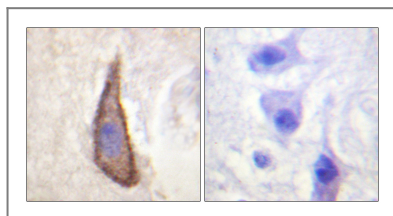
Western Blot analysis of COS7 cells using Phospho-DNAM-1 (S329) Polyclonal Antibody



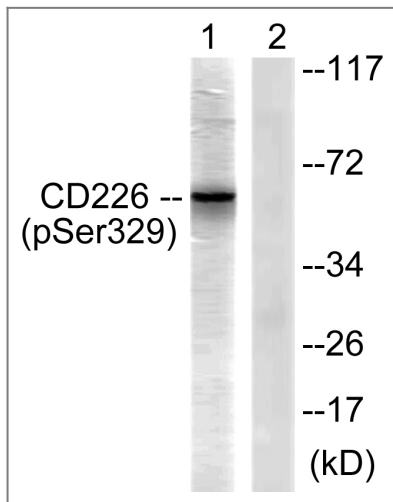
Enzyme-Linked Immunosorbent Assay (Phospho-ELISA) for Immunogen Phosphopeptide (Phospho-left) and Non-Phosphopeptide (Phospho-right), using CD226/DNAM-1 (Phospho-Ser329) Antibody



Immunofluorescence analysis of A549 cells, using CD226/DNAM-1 (Phospho-Ser329) Antibody. The picture on the right is blocked with the phospho peptide.



Immunohistochemistry analysis of paraffin-embedded human brain, using CD226/DNAM-1 (Phospho-Ser329) Antibody. The picture on the right is blocked with the phospho peptide.



Western blot analysis of lysates from COS7 cells, using CD226/DNAM-1 (Phospho-Ser329) Antibody. The lane on the right is blocked with the phospho peptide.

Contact information

Orders: order.cn@immunoway.com
 Support: support.cn@immunoway.com
 Telephone: 400-8787-807(China)
 Website: <http://www.immunoway.com.cn>
 Address: 2200 Ringwood Ave San Jose, CA 95131 USA



Please scan the QR code to access additional product information:
DNAM-1 (Phospho Ser329) Rabbit pAb

