

Calmodulin-1 (Phospho Thr80+Ser82) Rabbit pAb

CatalogNo: YP0912 **Orthogonal Validated** 

Key Features

Host Species

- Rabbit

Reactivity

- Human, Mouse, Rat

Applications

- WB, IHC, IF, ELISA

MW

- 17kD (Calculated)

Isotype

- IgG

Storage

Storage* -15°C to -25°C/1 year (Do not lower than -25°C)

Formulation Liquid in PBS containing 50% glycerol, 0.5% BSA and 0.02% sodium azide.

Recommended Dilution Ratios

WB 1:500-1:2000

IHC 1:100-1:300

IF 1:200-1:1000

ELISA 1:5000

Not yet tested in other applications.

Basic Information

Clonality Polyclonal

Immunogen Information

Immunogen The antiserum was produced against synthesized peptide derived from human Calmodulin-1 around the phosphorylation site of Thr79 and Ser81. AA range:46-95

Specificity

This antibody detects endogenous levels of Calmodulin-1 only when phosphorylated at both thr80 or ser82. The name of modified sites may be influenced by many factors, such as species (the modified site was not originally found in human samples) and the change of protein sequence (the previous protein sequence is incomplete, and the protein sequence may be prolonged with the development of protein sequencing technology). When naming, we will use the "numbers" in historical reference to keep the sites consistent with the reports. The antibody binds to the following modification sequence (lowercase letters are modification sites):KDtDsE

Target Information

Gene name CALM1

Protein Name Calmodulin-1

Organism	Gene ID	UniProt ID
Human	801 ; 805 ; 808 ;	P0DP23 ;
Mouse	12313 ;	P0DP26 ;
Rat	24242 ;	P0DP29 ;

Cellular Localization

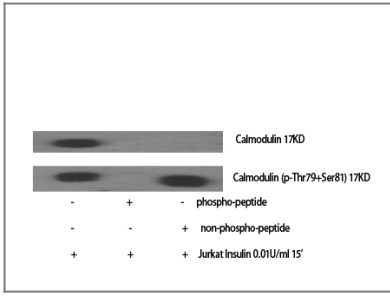
spindle pole,extracellular region,nucleus,nucleoplasm,cytoplasm,centrosome,cytosol,spindle microtubule,plasma membrane,voltage-gated potassium channel complex,sarcomere,growth cone,vesicle,calcium channel complex,G

Tissue specificity Blood,Brain,Cajal-Retzius cell,Fetal brain cortex,Lung,Lymph,Lymphoma,Muscle,Osteosarcoma,P

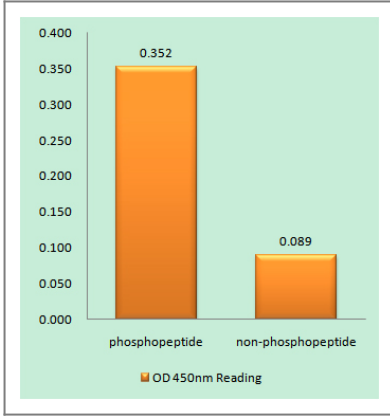
Function

Function:Calmodulin mediates the control of a large number of enzymes and other proteins by Ca(2+). Among the enzymes to be stimulated by the calmodulin-Ca(2+) complex are a number of protein kinases and phosphatases. Together with CEP110 and centrin, is involved in a genetic pathway that regulates the centrosome cycle and progression through cytokinesis.,miscellaneous:This protein has four functional calcium-binding sites.,PTM:Phosphorylation results in a decreased activity.,PTM:Ubiquitination results in a strongly decreased activity.,similarity:Belongs to the calmodulin family.,similarity:Contains 4 EF-hand domains.,subcellular location:Distributed throughout the cell during interphase, but during mitosis becomes dramatically localized to the spindle poles and the spindle microtubules.,subunit:Interacts with MYO1C (By similarity). Interacts with CEP97, CEP110, TTN/titin and SRY.,

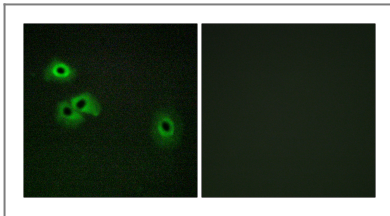
Validation Data



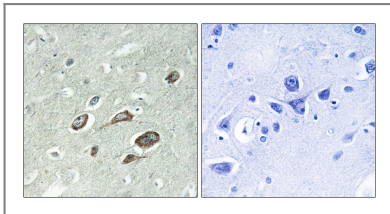
Western Blot analysis of various cells using Phospho-Calmodulin (T80/S82) Polyclonal Antibody



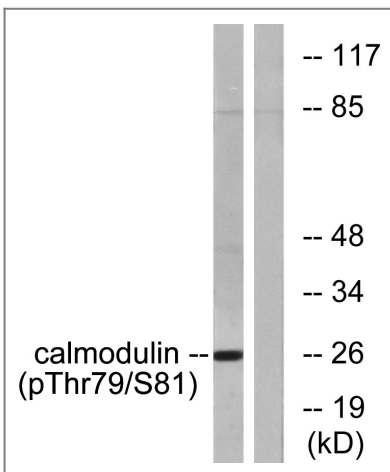
Enzyme-Linked Immunosorbent Assay (Phospho-ELISA) for Immunogen Phosphopeptide (Phospho-left) and Non-Phosphopeptide (Phospho-right), using Calmodulin (Phospho-Thr79+Ser81) Antibody



Immunofluorescence analysis of HepG2 cells, using Calmodulin (Phospho-Thr79+Ser81) Antibody. The picture on the right is blocked with the phospho peptide.



Immunohistochemistry analysis of paraffin-embedded human brain, using Calmodulin (Phospho-Thr79+Ser81) Antibody. The picture on the right is blocked with the phospho peptide.



Western blot analysis of lysates from Jurkat cells treated with Insulin 0.01U/ml 15', using Calmodulin (Phospho-Thr79+Ser81) Antibody. The lane on the right is blocked with the phospho peptide.

Contact information

Orders: order.cn@immunoway.com
Support: support.cn@immunoway.com
Telephone: 400-8787-807(China)
Website: <http://www.immunoway.com.cn>
Address: 2200 Ringwood Ave San Jose, CA 95131 USA



Please scan the QR code
to access additional
product information:

**Calmodulin-1
(Phospho
Thr80+Ser82)
Rabbit pAb**

For Research Use Only. Not for Use in Diagnostic Procedures.

[Antibody](#) | [ELISA Kits](#) | [Protein](#) | [Reagents](#)