

## Bad (Phospho Ser134) Rabbit pAb

CatalogNo: YP0910

### Key Features

#### Host Species

- Rabbit

#### Reactivity

- Human, Mouse, Rat

#### Applications

- WB, IHC, IF, ELISA

#### MW

- 28kD (Observed)

#### Isotype

- IgG

### Storage

**Storage\*** -15°C to -25°C/1 year (Do not lower than -25°C)

**Formulation** Liquid in PBS containing 50% glycerol, 0.5% BSA and 0.02% sodium azide.

### Recommended Dilution Ratios

**WB 1:500-1:2000**

**IHC 1:100-1:300**

**IF 1:200-1:1000**

**ELISA 1:5000**

**Not yet tested in other applications.**

### Basic Information

**Clonality** Polyclonal

### Immunogen Information

**Immunogen** The antiserum was produced against synthesized peptide derived from human BAD around the phosphorylation site of Ser134. AA range: 100-149

## Specificity

Phospho-Bad (S134) Polyclonal Antibody detects endogenous levels of Bad protein only when phosphorylated at S134. The name of modified sites may be influenced by many factors, such as species (the modified site was not originally found in human samples) and the change of protein sequence (the previous protein sequence is incomplete, and the protein sequence may be prolonged with the development of protein sequencing technology). When naming, we will use the "numbers" in historical reference to keep the sites consistent with the reports. The antibody binds to the following modification sequence (lowercase letters are modification sites):PKSAG

## Target Information

**Gene name** BAD

**Protein Name** Bcl2 antagonist of cell death

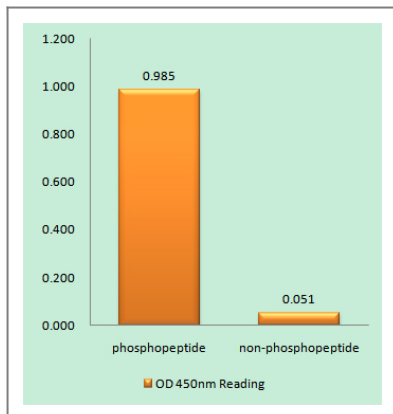
Organism	Gene ID	UniProt ID
Human	<a href="#">572;</a>	<a href="#">Q92934;</a>
Mouse	<a href="#">12015;</a>	<a href="#">Q61337;</a>
Rat	<a href="#">64639;</a>	<a href="#">Q35147;</a>

**Cellular Localization** Mitochondrion outer membrane. Cytoplasm . Colocalizes with HIF3A in the cytoplasm (By similarity). Upon phosphorylation, locates to the cytoplasm. .

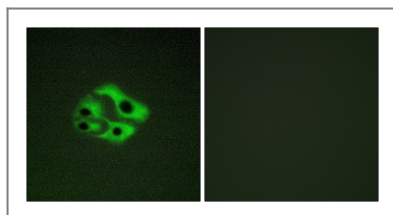
**Tissue specificity** Expressed in a wide variety of tissues.

**Function** Domain: Intact BH3 motif is required by BIK, BID, BAK, BAD and BAX for their pro-apoptotic activity and for their interaction with anti-apoptotic members of the Bcl-2 family. Function: Promotes cell death. Successfully competes for the binding to Bcl-X(L), Bcl-2 and Bcl-W, thereby affecting the level of heterodimerization of these proteins with BAX. Can reverse the death repressor activity of Bcl-X(L), but not that of Bcl-2 (By similarity). Appears to act as a link between growth factor receptor signaling and the apoptotic pathways. online information: Bcl 2-associated death promoter entry, PTM: Phosphorylated on one or more of Ser-75, Ser-99, Ser-118 and Ser-134 in response to survival stimuli, which blocks its pro-apoptotic activity. Phosphorylation on Ser-99 or Ser-75 promotes heterodimerization with 14-3-3 proteins. This interaction then facilitates the phosphorylation at Ser-118, a site within the BH3 motif, leading to the release of Bcl-X(L) and the promotion of cell survival. Ser-99 is the major site of AKT/PKB phosphorylation, Ser-118 the major site of protein kinase A (CAPK) phosphorylation. similarity: Belongs to the Bcl-2 family. subcellular location: Upon phosphorylation, locates to the cytoplasm. subunit: Forms heterodimers with the anti-apoptotic proteins, Bcl-X(L), Bcl-2 and Bcl-W. Also binds protein S100A10 (By similarity). The Ser-75/Ser-99 phosphorylated form binds 14-3-3 proteins. tissue specificity: Expressed in a wide variety of tissues. .

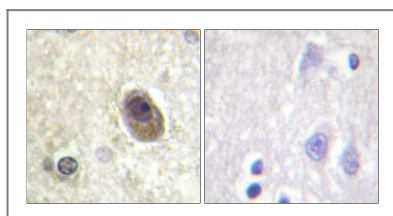
## Validation Data



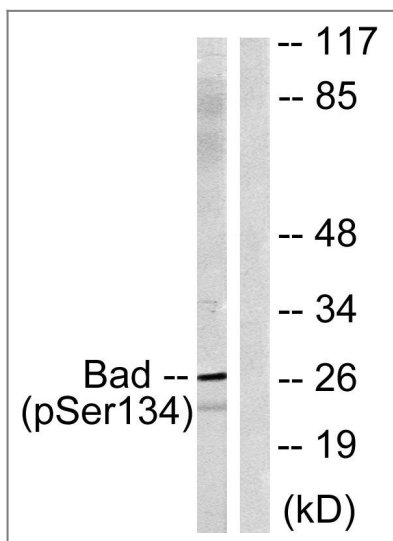
Enzyme-Linked Immunosorbent Assay (Phospho-ELISA) for Immunogen Phosphopeptide (Phospho-left) and Non-Phosphopeptide (Phospho-right), using BAD (Phospho-Ser134) Antibody



Immunofluorescence analysis of HeLa cells, using BAD (Phospho-Ser134) Antibody. The picture on the right is blocked with the phospho peptide.



Immunohistochemistry analysis of paraffin-embedded human brain, using BAD (Phospho-Ser134) Antibody. The picture on the right is blocked with the phospho peptide.



Western blot analysis of lysates from mouse liver, using BAD (Phospho-Ser134) Antibody. The lane on the right is blocked with the phospho peptide.

## Contact information

Orders: order.cn@immunoway.com  
 Support: support.cn@immunoway.com  
 Telephone: 400-8787-807(China)  
 Website: <http://www.immunoway.com.cn>  
 Address: 2200 Ringwood Ave San Jose, CA 95131 USA



Please scan the QR code to access additional product information:  
**Bad (Phospho Ser134) Rabbit pAb**

